



Parts Manual

Chariot

CR-10

Preface

Welcome, and congratulations on your choice of vehicle from Columbia ParCar Corp.! Your vehicle has been designed and manufactured to conform to applicable sections of ANSI B56.8. Your safe use and operation of your vehicle is important to us. Any alteration of your Columbia vehicle that results in the vehicle being in noncompliance with applicable ANSI standards is strictly prohibited. Columbia ParCar Corp. is not responsible or liable for any damage that results from any such alteration, and all warranties for any such altered vehicles are null and void.

These vehicles are not designed for over-the-road use. They do not conform to Federal Motor Vehicle Safety Standards or EPA regulations, and are not equipped for operation on public streets, roads, or highways.

To the best knowledge of Columbia ParCar Corp., the material contained herein is accurate as of the date this publication was approved for printing. Columbia ParCar Corp. is not liable for errors in this manual or for incidental or consequential damages that result from the use of the material in this manual. Columbia ParCar Corp. reserves the right to change specifications, equipment or designs at any time without notice and without incurring obligation.

This manual contains proprietary information that is protected by copyright. All rights are reserved. No part of this manual may be photocopied, reproduced, or translated to another language without the written consent of Columbia ParCar Corp. Columbia ParCar Corp. products are manufactured under one or more of the following U.S. Patents - 2986162, 2987934, 3116089, 3144631, 3144860, 3229792, 3434887, 3559773, 3673359, 3680403, 3683716, 3709317, 4648473, Des. 225626.



1115 Commercial Avenue • Reedsburg, WI 53959
Phone: (608) 524-8888 • Fax: (608) 524-8380
(800) 222-4653 • Web: www.parcars.com



INDEX – CR10

SECTION 1 BODY

Body And Wheels	1-1
Body Detail	1-2
Hub Assembly Front & Left Rear -4 Hole	1-7
Drive Hub and Brake Assembly	1-9

SECTION 2 DRIVE SYSTEMS

Drive System – No Reverse	2-1
Drive System – Reverse	2-5
Control Panel Assembly – Forward Option	2-9
Control Panel Assembly – Forward Reverse Option	2-10
Speed Control Switch	2-12
Traction Motor	2-14

SECTION 3 ELECTRICAL

Hour Meter Installation	3-1
Electrical Wiring Diagram – Forward Only	3-2
Electrical Wiring Diagram – Forward and Reverse	3-4
Main Wire Harness Schematic	3-6
Battery And Hardware	3-8
Battery Charger Schematic	3-9
Keyswitch Information	3-10

CHANGE HISTORY		
DATE	DESCRIPTION	BY
5/10/11	Issued	TS
5/31/11	Improved knee pad attachment	TS
8/17/11	Added knee pad kit p/n	TS
4/9/12	Added Page 21 with keyswitch information	TS
3/22/13	P/N 510358 increased length from .75 to .875"	TS
4/11/13	Complete revision (ECR 109092)	TS
12/4/13	Corrected wire diagram	TS

**DID YOU
KNOW?**

CartPros directs you to the right part using the part numbers from this manual. Enter the part number into our search box and it will find the part you are looking for.

**GET STARTED
HERE**



<https://CartPros.com/f.html>



CR 10

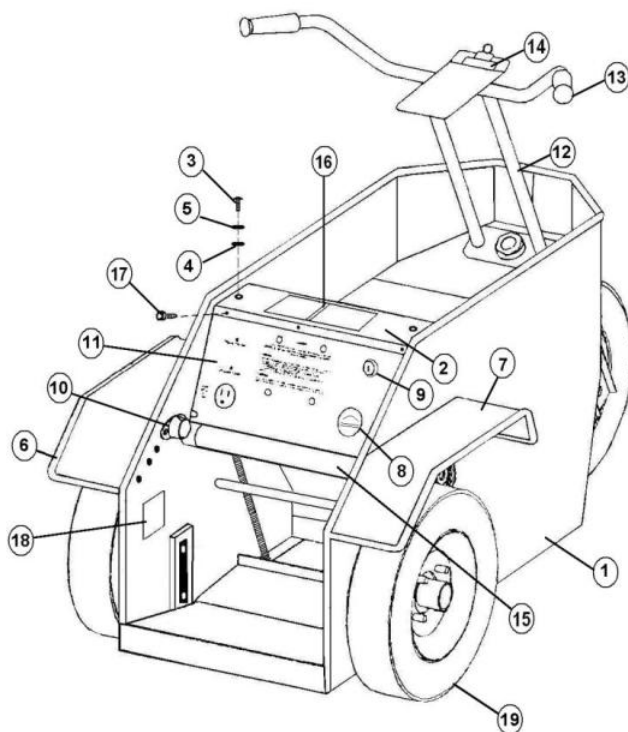
PARTS MANUAL

SECTION 1 BODY



Find replacement parts for your cart faster at **CartPros.com**

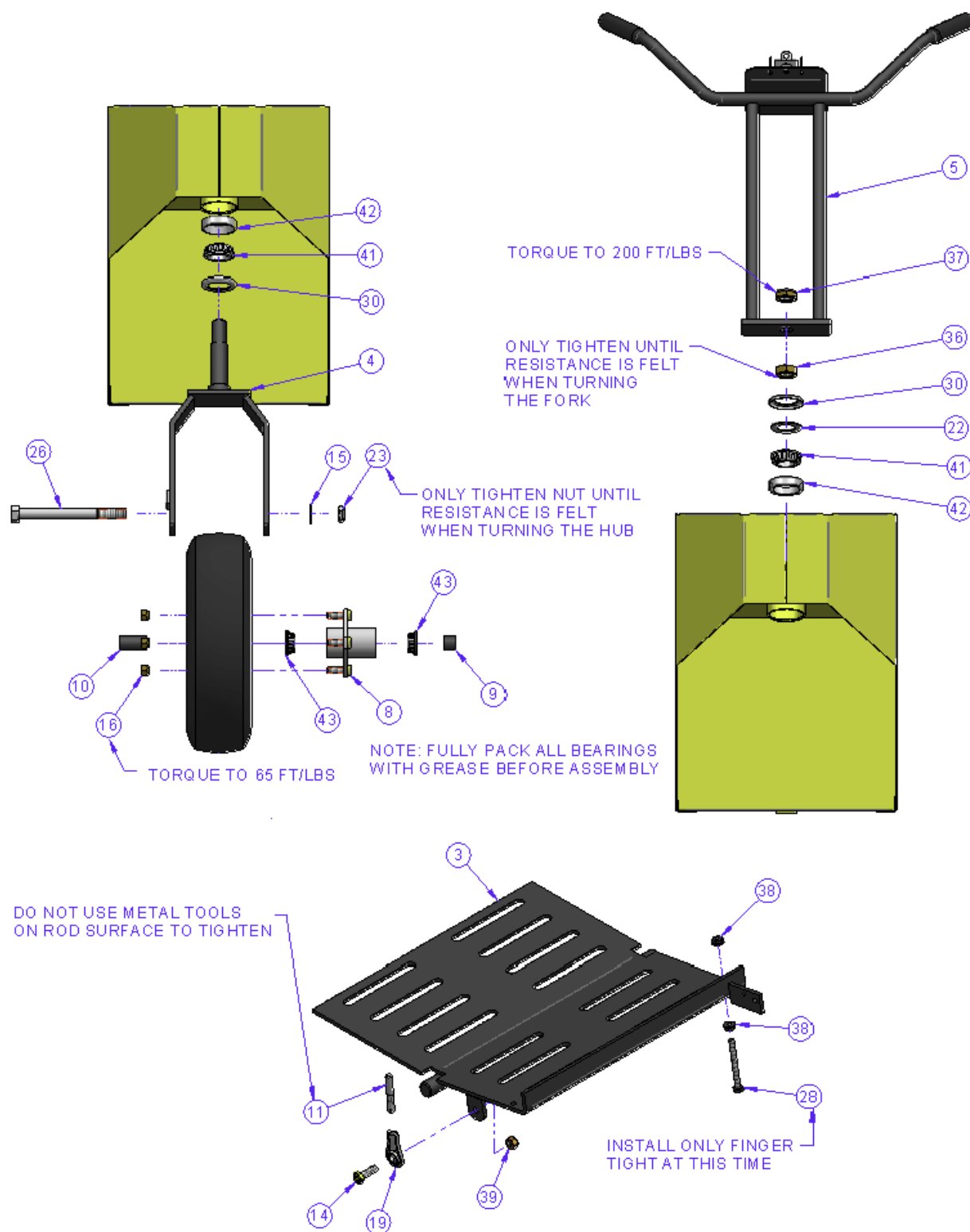
BODY & WHEELS - CR10



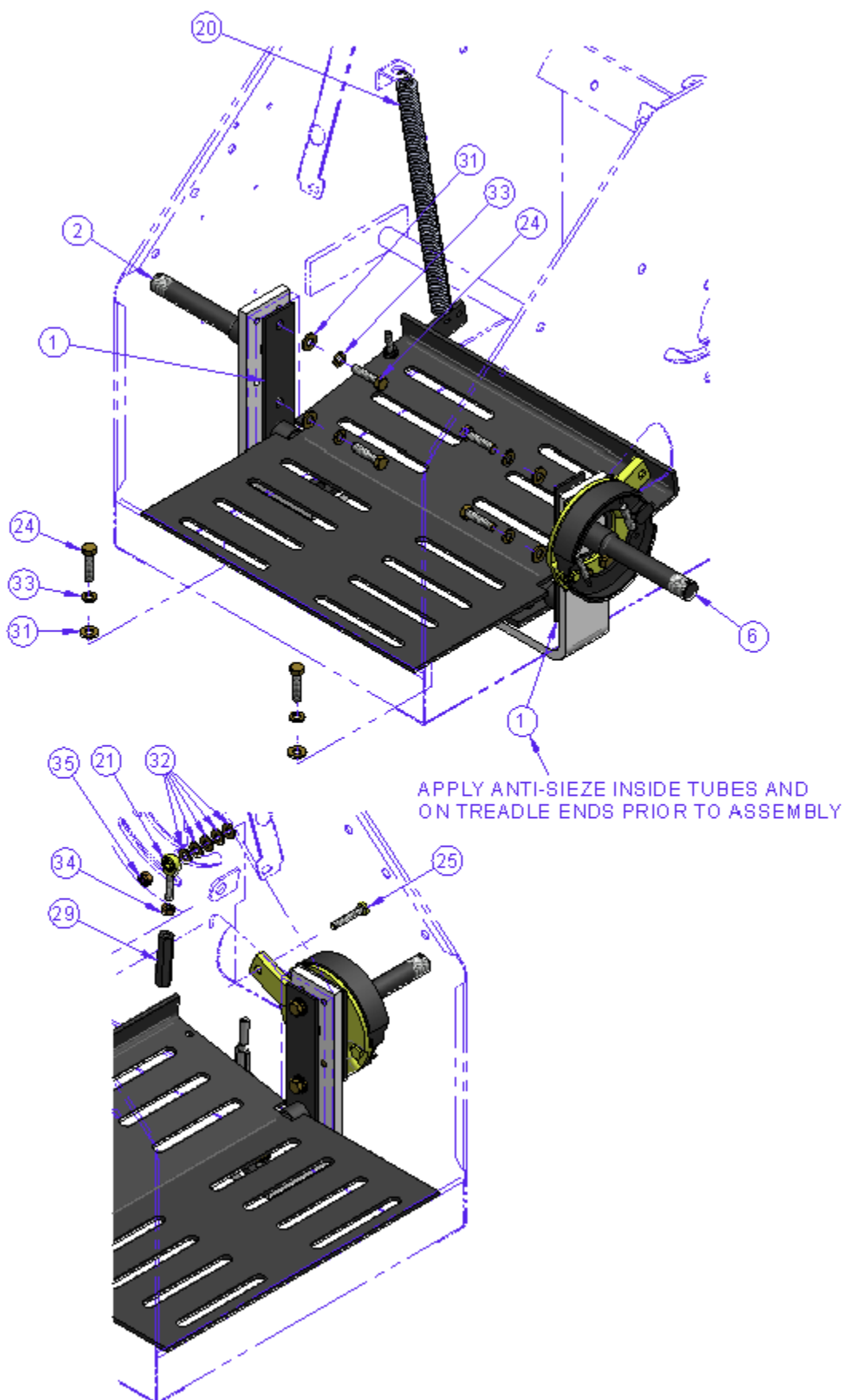
ITEM	CPC P/N	DESCRIPTION	QTY	SEATS P/N
1	19201-00	CHASSIS	1	467105
2	51301-00	COVER CONTROL	1	467106
3	3987-BS	CAP SCREW COVER TO BODY – 5/16-18 X .3/4"	2	719642
4	6702-B	WASHER, FLAT, 5/16"	5	719810
5	7041-B	LOCK WASHER, 5/16"	5	719838
*	11735	NUT, TINNEMAN – CLIPPED TO BODY FRAME	2	719537
6	47965-00	FENDER, L.H.	1	467107
7	47966-00	FENDER, R.H.	1	467108
8	75064-07	METER, BATTERY DISCHARGE INDICATOR, 12V	1	759872
9	N/A	KEYSWITCH, SEE PAGE 21 FOR INFORMATION	1	N/A
*	71767-05	NON-REMOVABLE KEY ASSEMBLY	1	719432
10	71808-00	BUTTON, HORN	1	709176
11	66600-00	CHARGER, BUILT-IN 12V	1	709652
12	56812-00	HANDLEBAR, ASSEMBLY (Includes grip and clip)	1	463330
13	56818-00	GRIP, HANDLE BAR"	2	709381
14	850	CLIP, STEMCO, 3", STAINLESS	1	709628
15	51341-00	PAD, KNEE (ATTACHED WITH 7118 & 2685-W)	1	10633611721 172
16	53251-01	LABEL, OPERATOR/WARNING	1	709648
17	2530	SCREW, #10X3/4 SHWH, T/S	5	719563
*	7118	WASHER #10, I-TOOTH (behind item 17)	5	719841
*	11736	NUT, TINNEMAN (behind item 17)	5	719538
18	N/A	NAMEPLATE	1	511349
19	40808-10	TIRE/WHEEL ASSY, 4 HOLE, 4.8X8 PNEU, NON-MARKING	3	760323
19A	40988-95	TIRE/WHEEL ASSY, 4.8X8 LRC	3	709107
19B	42115-04	TIRE/WHEEL ASSY, FOAM FILLED 4.8X8	3	719349
20	60420-00	KNEE PAD KIT (Includes Item 21, P/N 7118 & 2685-W)	1	19040911721 172U

* NOT SHOWN

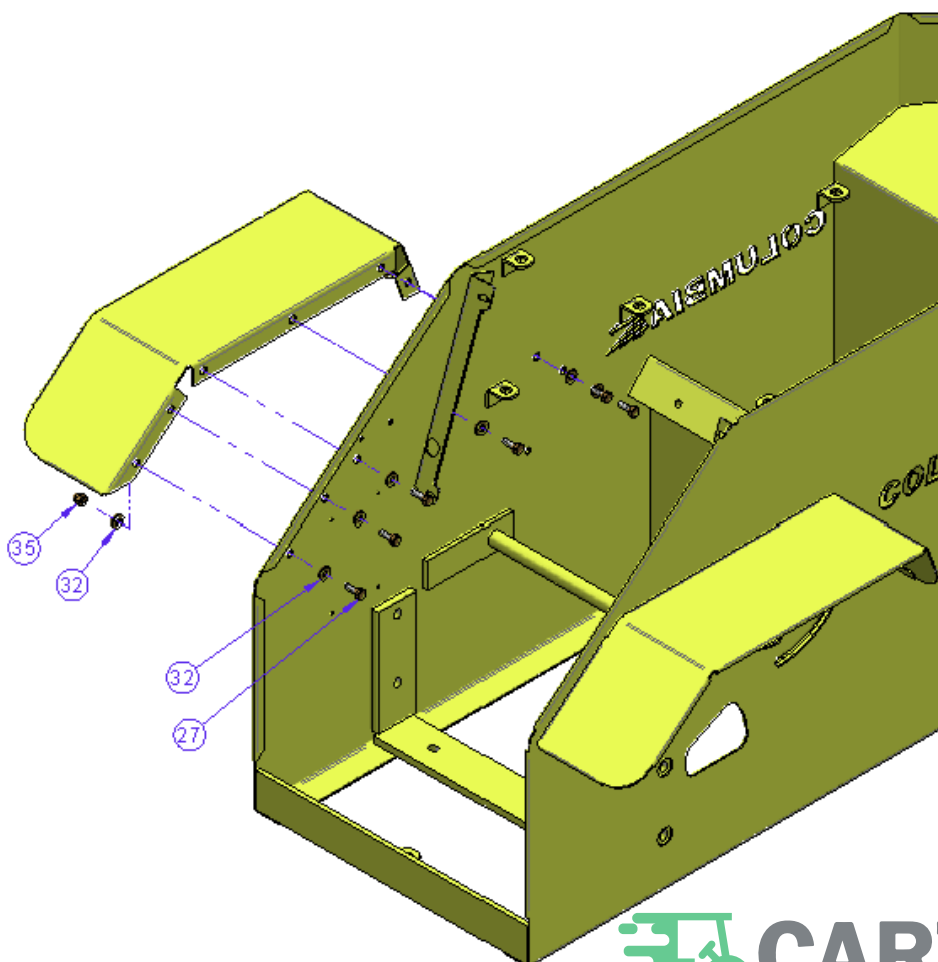
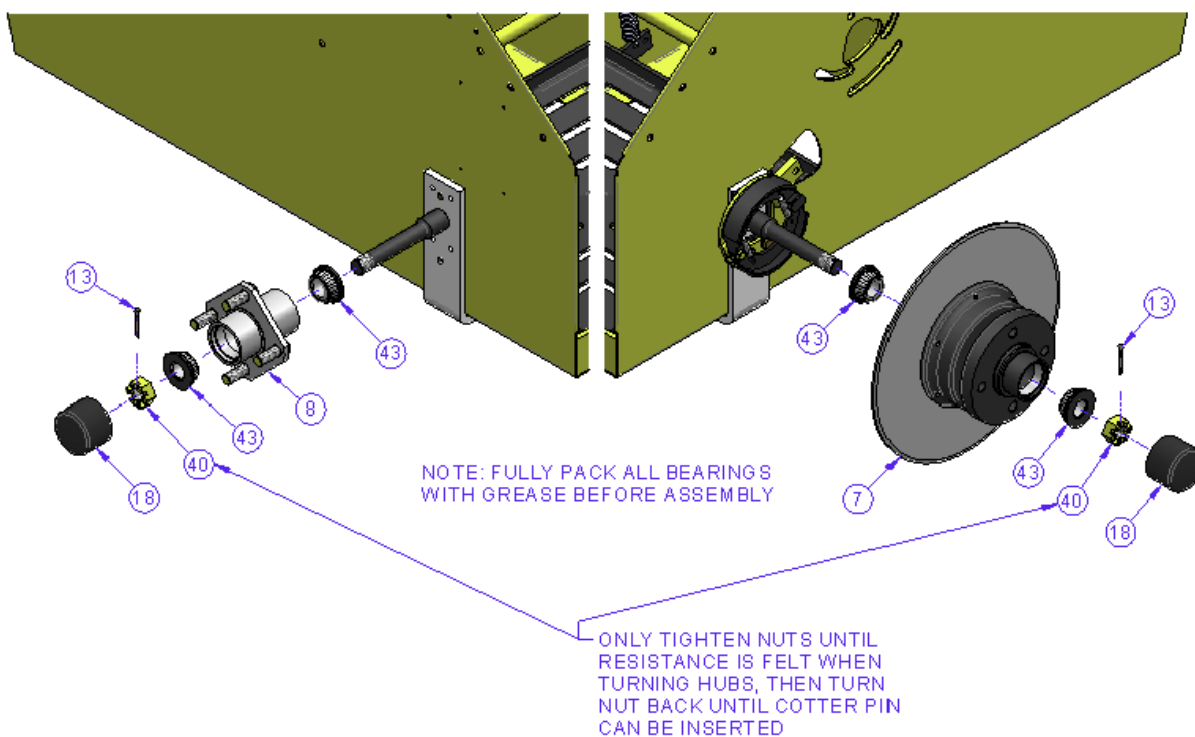
BODY DETAIL - CR10



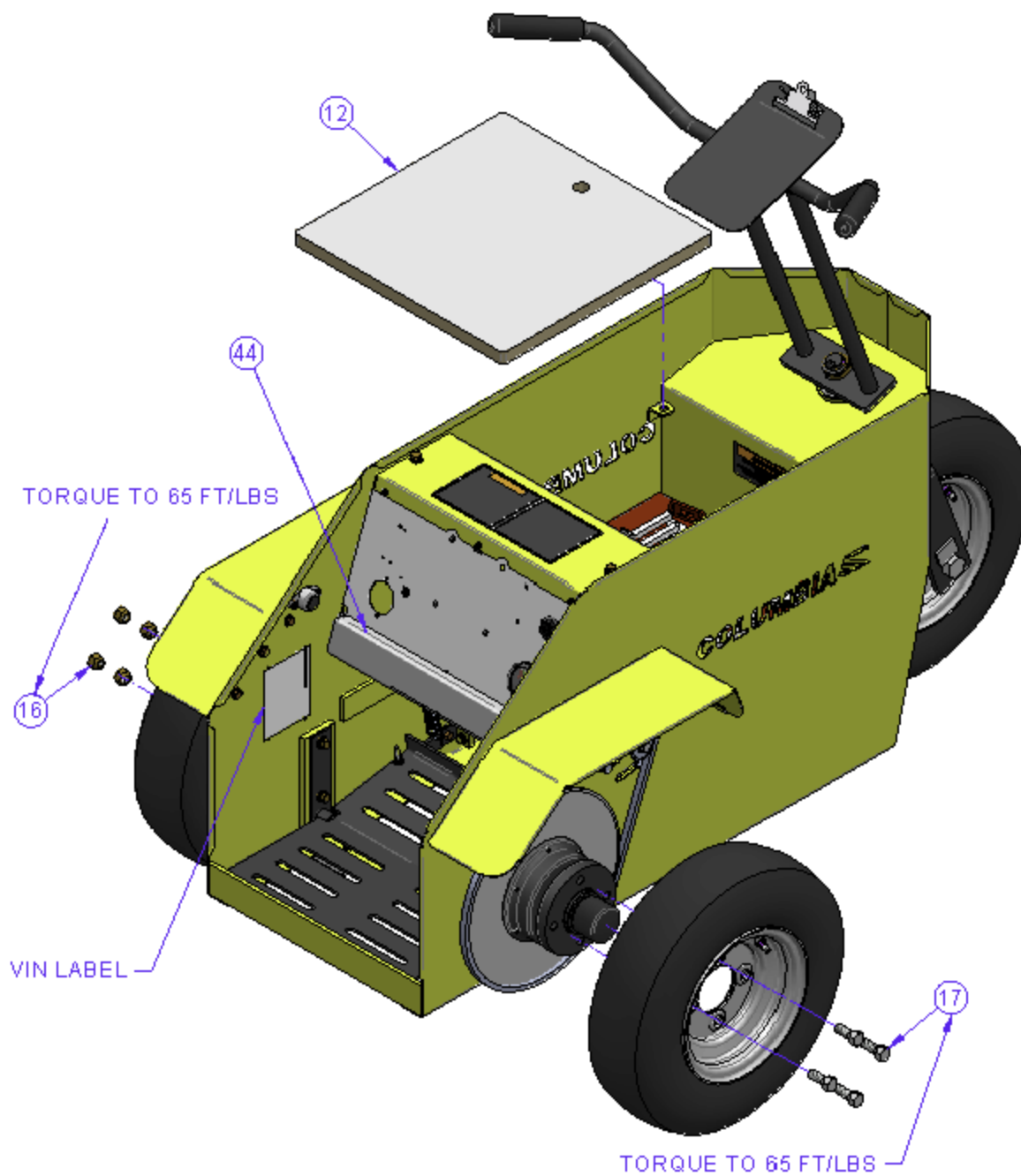
BODY DETAIL - CR10 (Cont.)



BODY DETAIL - CR10 (Cont.)



BODY DETAIL - CR10 (Cont.)



BODY DETAIL - CR10 (Cont.)

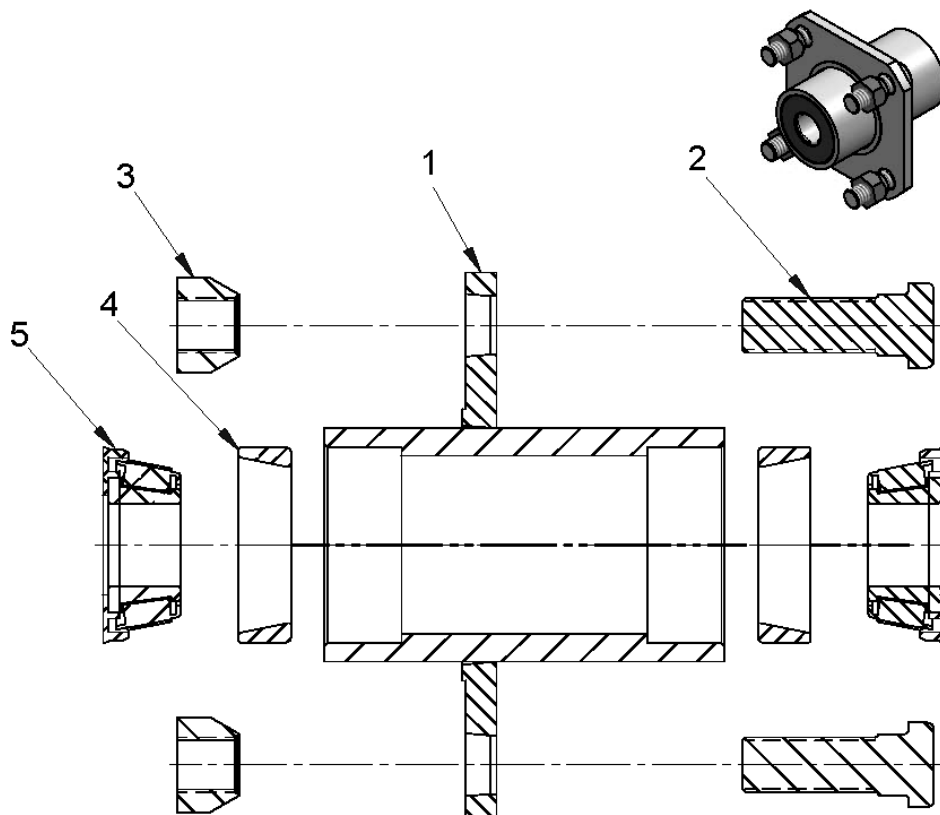
ITEM	CPC P/N	DESCRIPTION	QTY	SEATS P/N
1	40315-00	TREADLE SUPPORT ASSEMBLY	2	306014
2	56803-00	SPINDLE ASSEMBLY	1	306016
3	40318-00	TREADLE ASSEMBLY	1	306017
4	56800-00	FORK ASSEMBLY, FRONT	1	306018
5	56812-00	HANDLEBAR, ASSEMBLY (Includes grip and clip)	1	463330
6	41375-00A	SPINDLE & CLUSTER ASSEMBLY	1	467230
7	*	HUB/DRUM W/SPROCKET ASSEMBLY (See Item 46)	1	467331
8	*	HUB/FRT & L RR, 4 HOLE ASSEMBLY (See Item 47)	2	467795
9	56833-00	FRONT FORK SPACER, .875"	1	510358
10	56836-00	FRONT FORK SPACER, 2.0"	1	510359
11	41205-00	ROD, BRAKE LINK	1	510379
12	51303-00	DECK, MEZZTREAD	1	513688
13	560	COTTER PIN	2	707337
14	4017	SCREW, 5/16-18X1 HHC G8	1	708085
15	6037	WASHER, 3/4	2	708659
16	43152-66	NUT, 1/2-20	4	709002
17	41200-94	WHEEL BOLT (Included in Kit 41866-06)	4	709082
18	56827-00	CAP, DUST	2	709392
19	57019-00	ROD END, LOWER BEARING, (RH FEMALE)	1	709450
20	11830	SPRING, TREADLE RETURN, 3/4 X 8-1/2"	1	709644
21	56806-00	ROD END BEARING 1/4-28, MALE, BALL JOINT	1	709649
22	6035	WASHER, DUST	1	709651
23	7711	NUT, JAM, NYLON 3/4-10X1/2	1	709655
24	2871-W	SCREW, 5/16-18X1 1/4, HHCS G5	6	719592
25	2872-W	SCREW, 1/4-20X1 1/2 HEX CAP	1	719593
26	3431	SCREW, 3/4-10X8 HHCS G5	1	719618
27	3787-B	SCREW, HHC 1/4-20 X 3/4"	12	719636
28	3860-B	SCREW, 1/4-20X2 1/2 HHCS	1	719637
29	41208-00	FEMALE HEX STANDOFF 1/2X2.12	1	719658
30	56830-00	WASHER, CUPPED	2	719758
31	6702-B	WASHER, 5/16"	6	719810
32	6703-B	WASHER 1/4"	29	719811
33	7041-B	LOCKWASHER, 5/16	6	719838
34	7676	NUT, 1/4-28 HEX	1	719874
35	7686	LOCKNUT, NYLOK	13	719879
36	7712	NUT, JAM	1	719885
37	7714	NUT, JAM, NYLON	1	719886
38	7724-B	NUT, 1/4-20 GR A, SERRATED, FLNG, LOCK	2	719887
39	7739	LOCKNUT, NYLOCK 5/16-18	1	719892
40	82713-96	NUT, 3/4-16, SLOTTED, HEX G5	2	719933
41	9080	BEARING, CONE	2	719959
42	9081	BEARING, CUP	2	719960
43	9620	BEARING, TAPERED ROLLER W/SEAL	6	749753
44	51341-00	KNEE PAD (Attached with 2 each P/N's 7118 & 2685-W)	1	106336%
45**	60420-00	KNEE PAD KIT (Includes Item 44, 2 each P/N's 7118 & 2685-W)	1	190409%
46**	41374-00A	ASSEMBLY, SPINDLE BRAKE HUB (Includes Items 6, 7, 13, 17, 18, 40, 43)	1	467229
47**	56801-00	KIT, HUB FRNT & L RR 4H, (Includes Items 8, 16 & 43)	1	192188

* ONLY AVAILABLE AS A KIT

** NOT SHOWN

NOTE: Include VIN to ensure proper color.

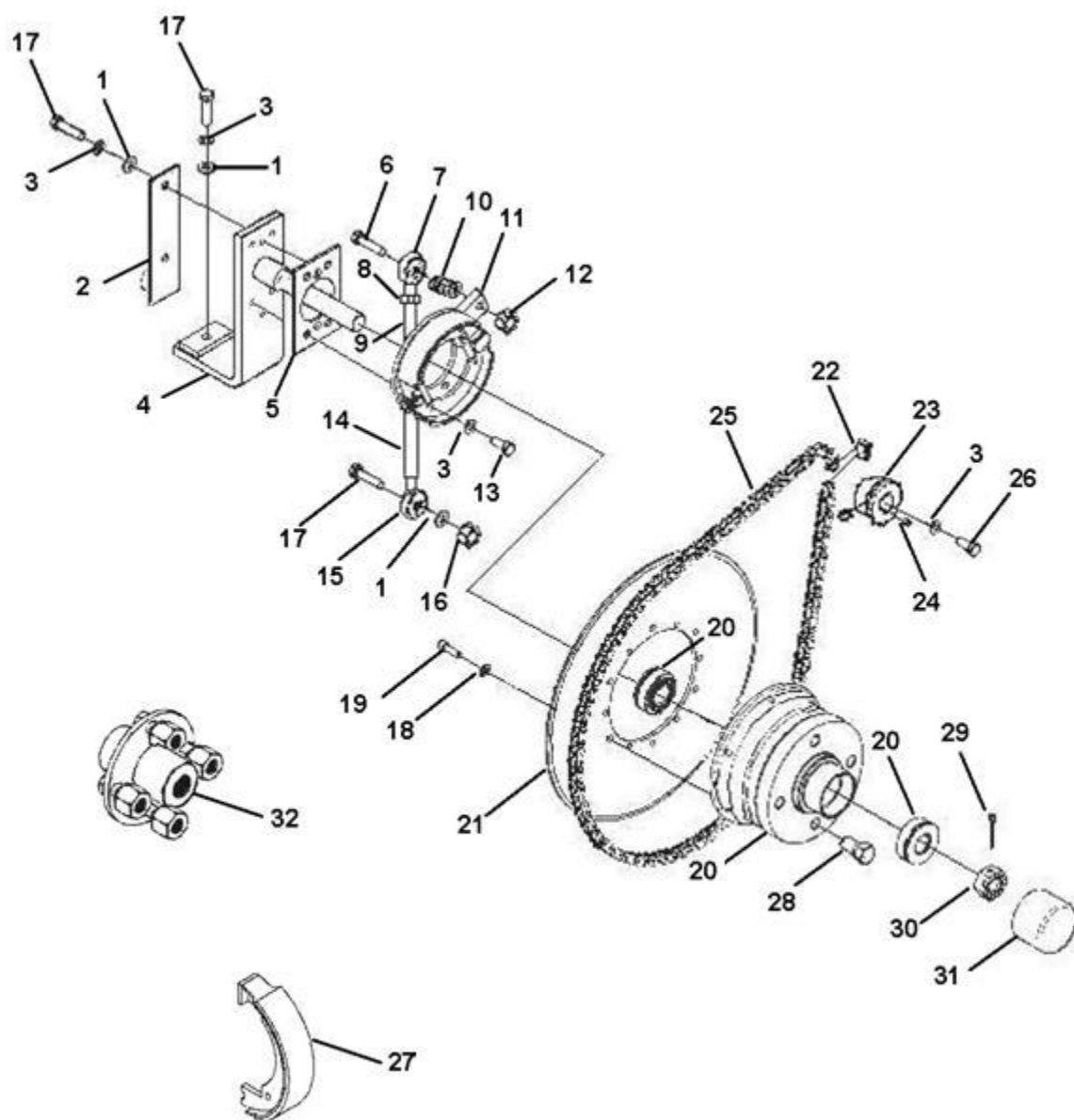
HUB ASSEMBLY Front & Left Rear -4 Hole - CR10



ITEM	CPC P/N	DESCRIPTION	QTY	SEATS P/N
1	*	HUB	1	310547
2	41199	WHEEL BOLT 1/2-20X1 1/2	4	719655
3	43152-66	NUT, 1/2-20	4	709002
4	*	BEARING CUP	2	719487
5	*	BEARING, TAPERED ROLLER W/SEAL	2	749753
6	9089	KIT, HUB BEARING, RACE & SEAL (includes Items 4 & 5)	1	191886U
7	56801-00	KIT HUB ASSEMBLY (Includes Items 1-5)	1	192188U

* ONLY AVAILABLE AS A KIT

DRIVE HUB AND BRAKE ASSEMBLY - CR10



DRIVE HUB AND BRAKE ASSEMBLY - CR10

ITEM	CPC P/N	DESCRIPTION	QTY	SEATS P/N
1	6702-B	WASHER, FLT 5/16"	3	719810
2	40315-00	TREADLE SUPPORT	1	306014
3	7041-B	LOCKWASHER, 5/16	7	719838
4	56803-00	SPINDLE ASSEMBLY	1	306016
5	33403-00	SPACER, BRAKE	1	510360
6	3993	SCREW, HEX CAP 1/4-20X1 1/4"	1	719644
7	56806-00	ROD END BEARING 1/4-28, MALE, BALL JOINT	1	709649
8	7676	NUT, 1/4-28 HEX	1	719874
9	41205-00	ROD, BRAKE LINK	1	510379
10	6703-B	WASHER, PLAIN 1/4	5	719811
11	41211-00A	BRAKE CLUSTER	1	709647
*	45007-04	BRAKE SPRINGS (used with Item 11)	2	719382
12	7686	LOCKNUT, NYLOK	1	719879
13	3987-BS	SCREW, HEX CAP 5-16-18X3/4"	4	719642
14	41208-00	TUBE BRAKE LINK	1	719658
15	57019-00	ROD END, LOWER BEARING, (RH FEMALE)	1	709450
16	7739	LOCKNUT, NYLOCK 5/16-18	1	719892
17	2871-W	SCREW, HEX CAP 5/16-18X1 1/4"	1	719592
18	7036-B	WASHER, LOCK 1/4"	6	719834
19	3414	CAP SCREW, 1/4-20 X 3/4"	6	719486
20	41866-06	KIT, HUB/DRUM W/BEARING	1	191885U
21	33406-00	SPROCKET, 96 TOOTH #35	1	709646
22	33413-00	MASTER LINK, CHAIN #35	1	709747
23	33400-00	SPROCKET, 13 T, 3/16 KIT #35	1	709645
24	41204-63A	KEY (SPROCKET TO MOTOR)	1	719656
25	N/A	CHAIN, #35, 55 LINK (Only available with 33409-00)	1	709188
N/A	33409-00	CHAIN ASSY, #35, 55 LINK (Includes Item 22 and 25)	1	461337
26	3439	SCREW, HEX CAP 8MM X 1 1/4" X 20MM	1	719619
27	41257-07	BRAKE SHOE	1	759840
28	41200-94	WHEEL BOLT (Included in Kit 41866-06)	4	709082
29	560	COTTER PIN	2	707337
30	82713-96	NUT, 3/4-16	2	719933
31	56827-00	CAP, DUST	2	709392

* NOT SHOWN

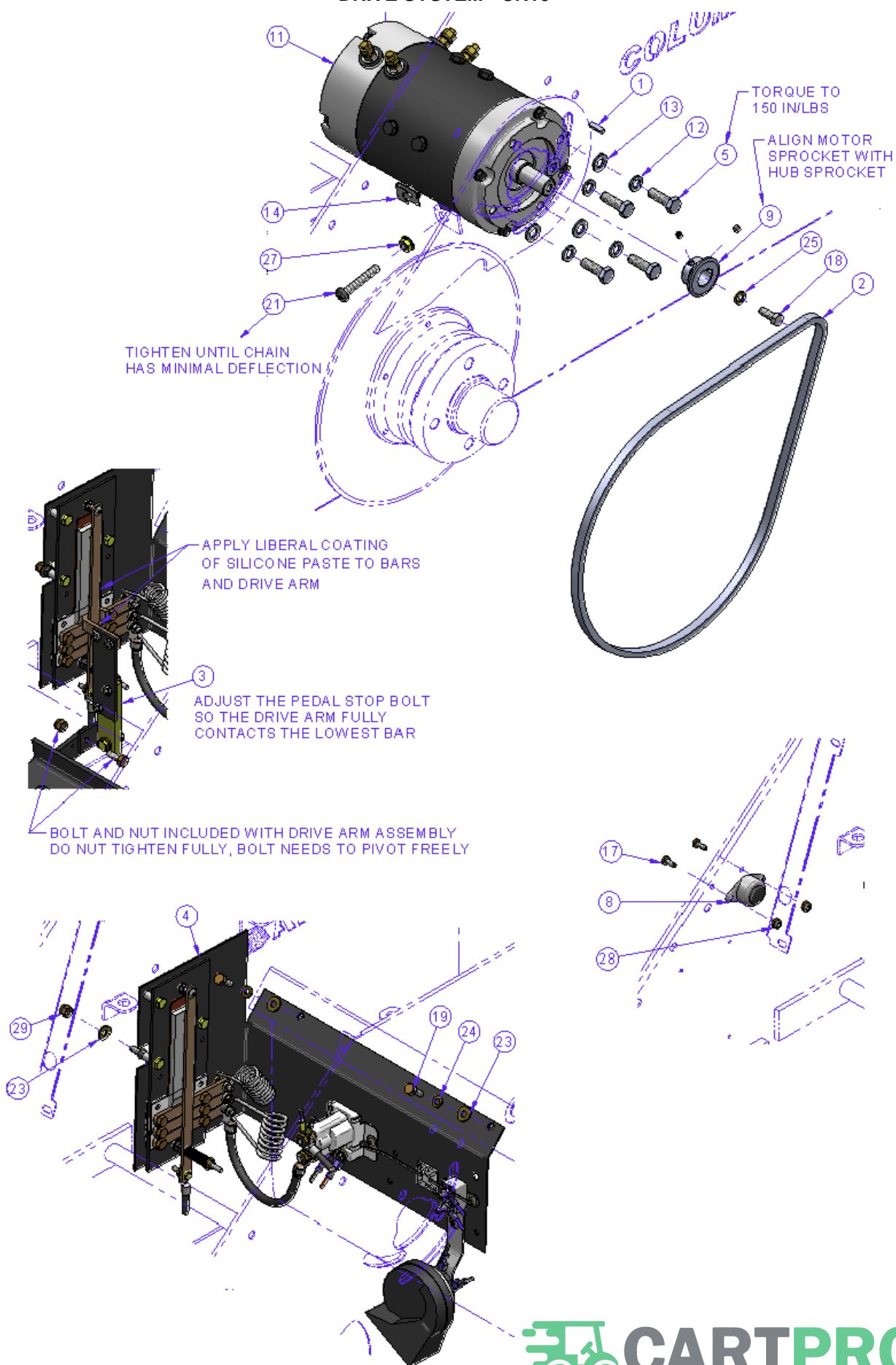


CR 10

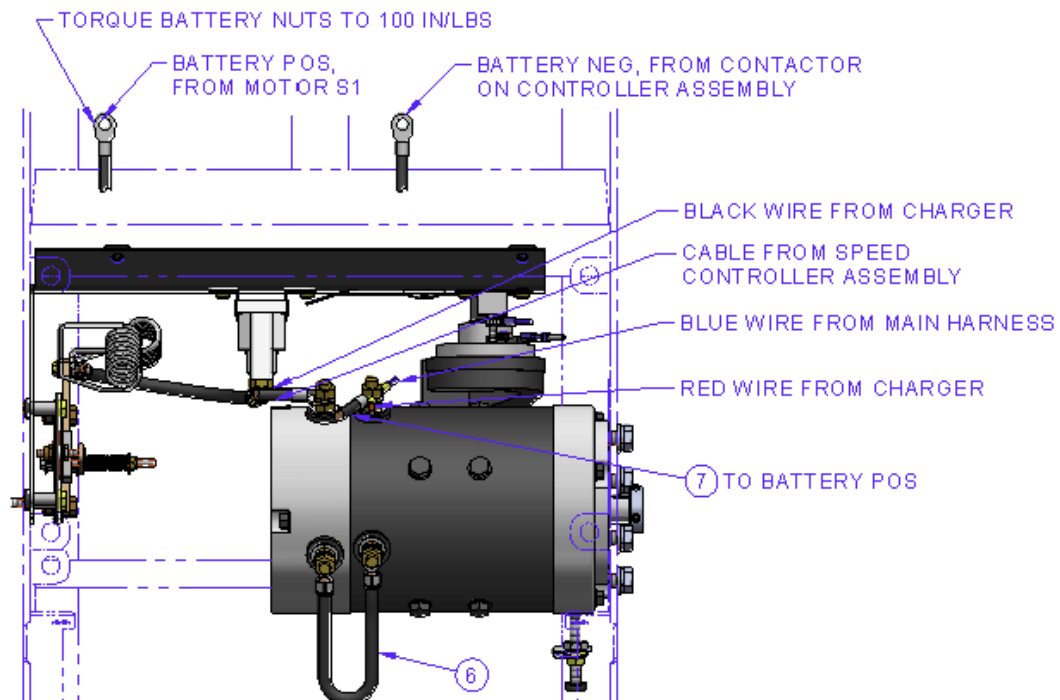
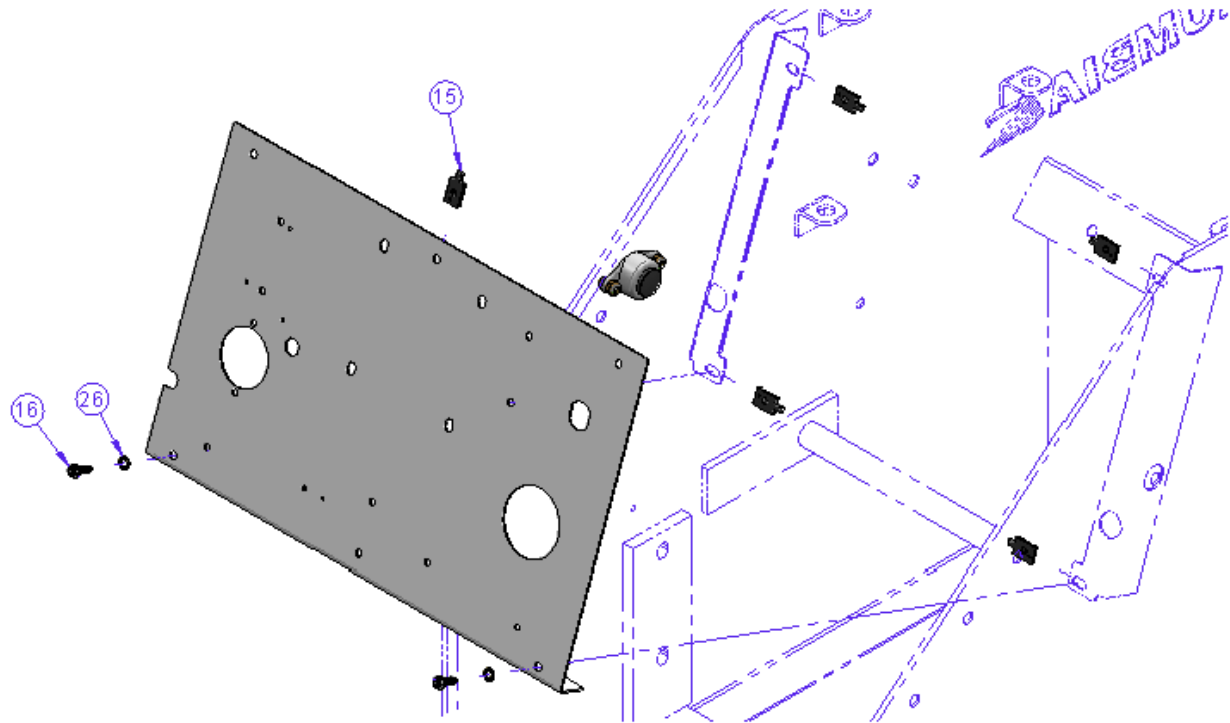
PARTS MANUAL

SECTION 2 DRIVE SYSTEMS

DRIVE SYSTEM - CR10



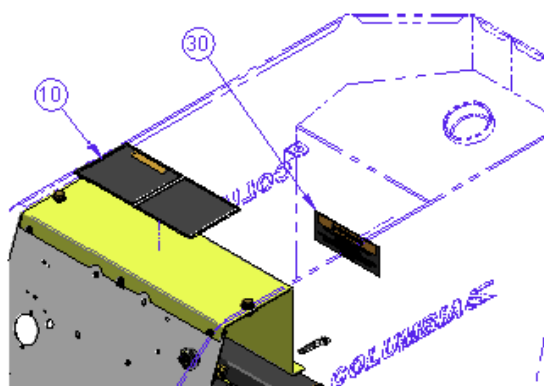
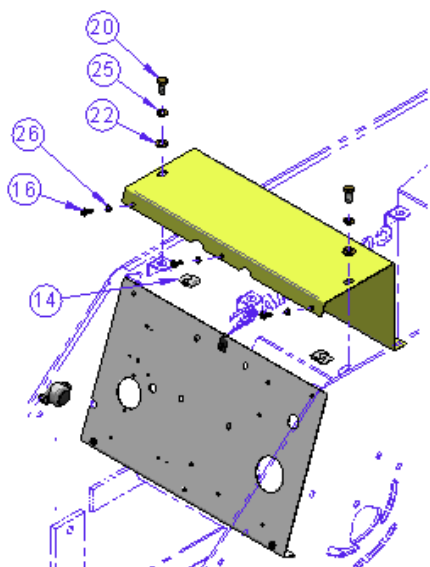
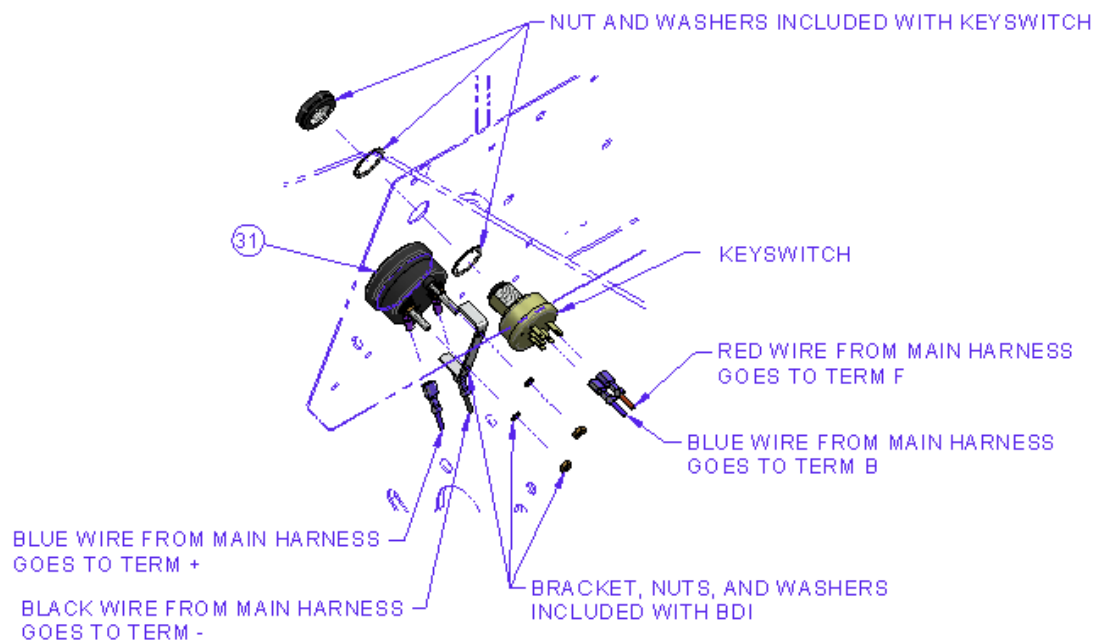
DRIVE SYSTEM - CR10 (Cont.)



TORQUE ALL MOTOR NUTS TO 100 IN/LBS
USE A FLAT OPEN WRENCH TO HOLD THE
STUD NUT WHEN APPLYING TORQUE

TORQUE CONTACTOR NUT TO 55 IN/LBS
USE A FLAT OPEN WRENCH TO HOLD THE
STUD NUT WHEN APPLYING TORQUE

DRIVE SYSTEM - CR10 (Cont.)



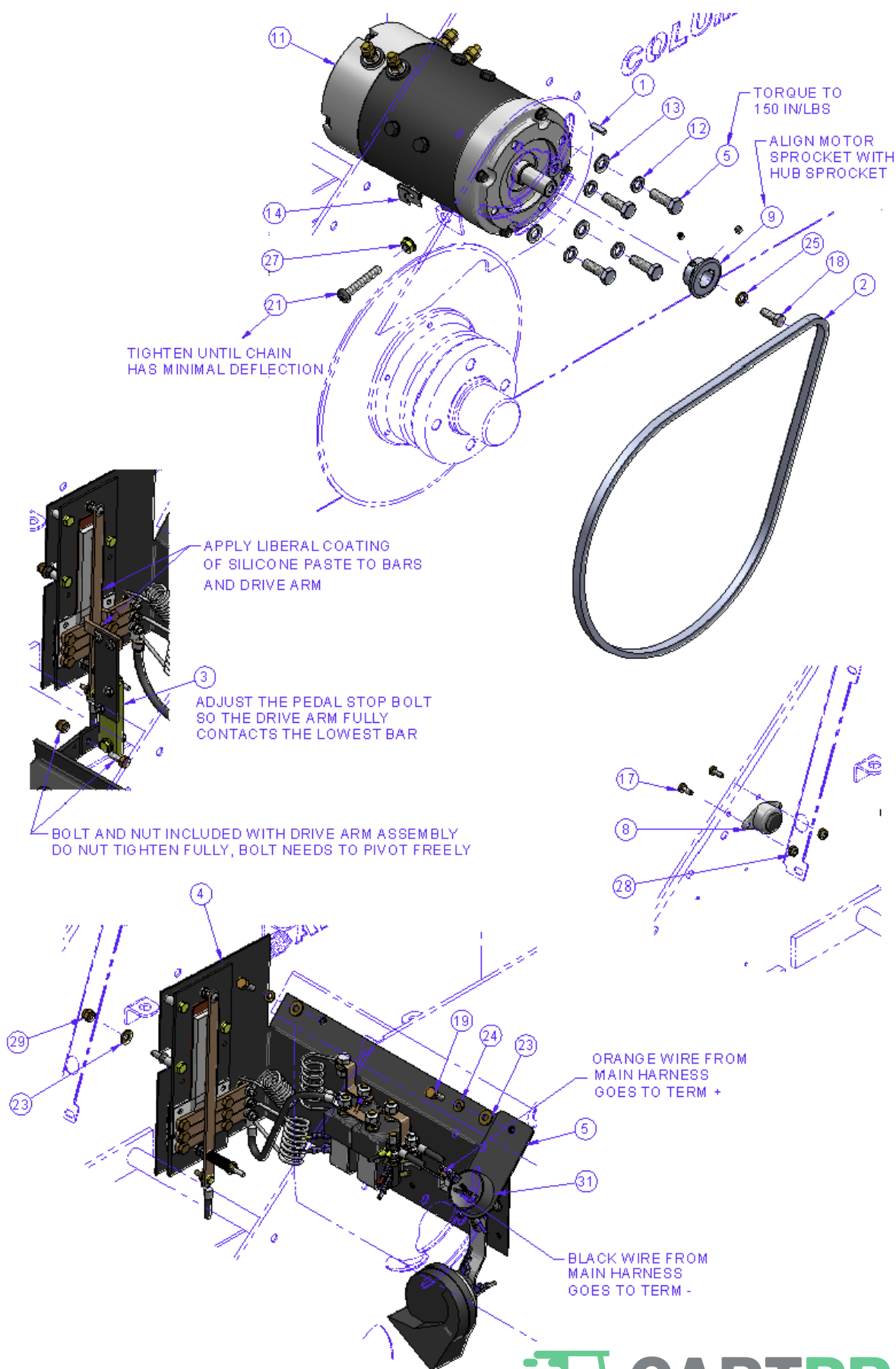
DRIVE SYSTEM - CR10 (Cont.)

ITEM	CPC P/N	DESCRIPTION	QTY	SEATS P/N
1	33401-00	KEY SPROCKET	1	461334
2	33409-00	CHAIN, #35, 55 LINK W/MASTER	1	461337
3	40300-00	DRIVE ARM ASSEMBLY	1	461420
4	*	CONTROL PANEL ASSEMBLY	1	467338
5	708750	SCREW, M10X30, CL8 HHCS	4	708750
6	70099-88	CABLE, 4 GA X 8.75", 5/16" TERM	1	709004
7	70447-90	CABLE, 6GA X 14", 5/16" TERMINAL	1	709033
8	71808-00	SWITCH, HORN BUTTON	1	709176
9	33400-00	SPROCKET, 13 T, 3/16 KIT #35	1	709645
10	53251-01	LABEL, OPERATOR/WARNING	1	709648
11	69400-00	MOTOR, TRACTION 12V	1	709653
12	7125	WASHER, M10, LOCK	4	709789
13	6052	WASHER, M10, 10MMX21MMX2.20MM	4	719004
14	11735	NUT, TINNEMAN J-TYPE	3	719537
15	11736	NUT, TINNEMAN, #10 U-TYPE	5	719538
16	2530	SCREW, #10X3/4 SHWH, T/S	5	719563
17	2592	SCREW, 10-24 X 1/2 PPHM	2	719566
18	3439	SCREW, HEX CAP 8MM X 1 1/4" X 20MM	1	719619
19	3787-B	SCREW, HHC 1/4-20 X 3/4", G5	2	719636
20	3987-BS	SCREW, 5/16-18 X .3/4" HHC G5	2	719642
21	5207-BS	SCREW, 5/16-18 X 2,PPH	1	719730
22	6702-B	WASHER, FLAT, 5/16"	2	719810
23	6703-B	WASHER 1/4"	3	719811
24	7036-B	WASHER, LOCK 1/4"	2	719834
25	7041-B	LOCK WASHER, 5/16"	3	719838
26	7118	WASHER #10, I-TOOTH	5	719841
27	7525	LOCKNUT, 5/16-18 HEX FLG, WHIZ	1	719864
28	7624	NUT, 10-24 NYLOCK	2	719870
29	7686	NUT, 1/4-20	1	719879
30	53283-00	BATTERY BOX DECAL	1	739546
31	75064-07	BDI METER 12V	1	759872

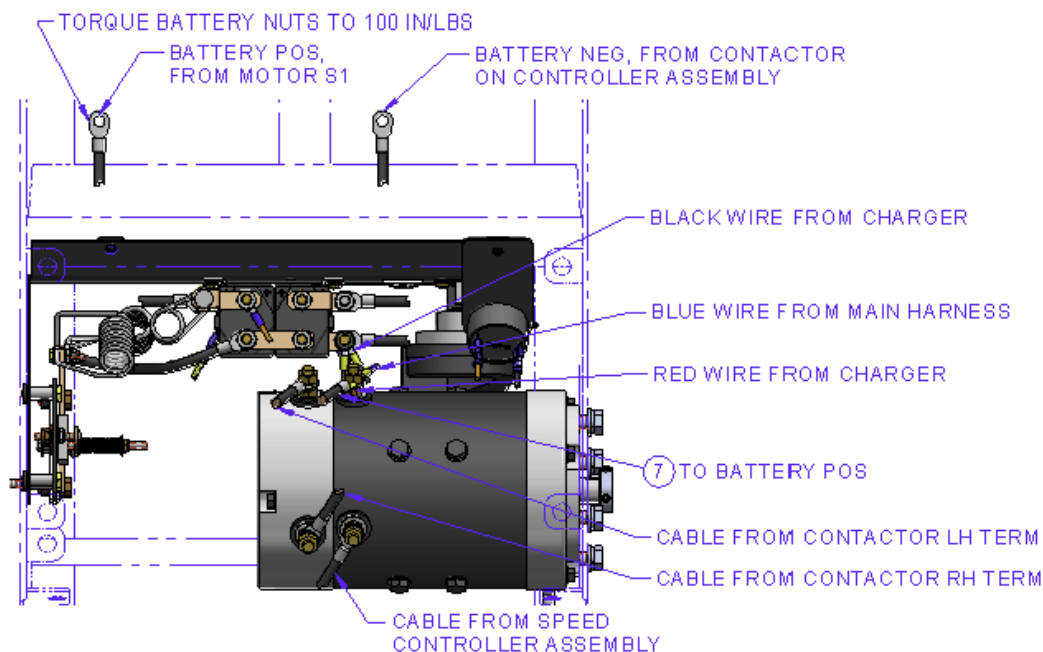
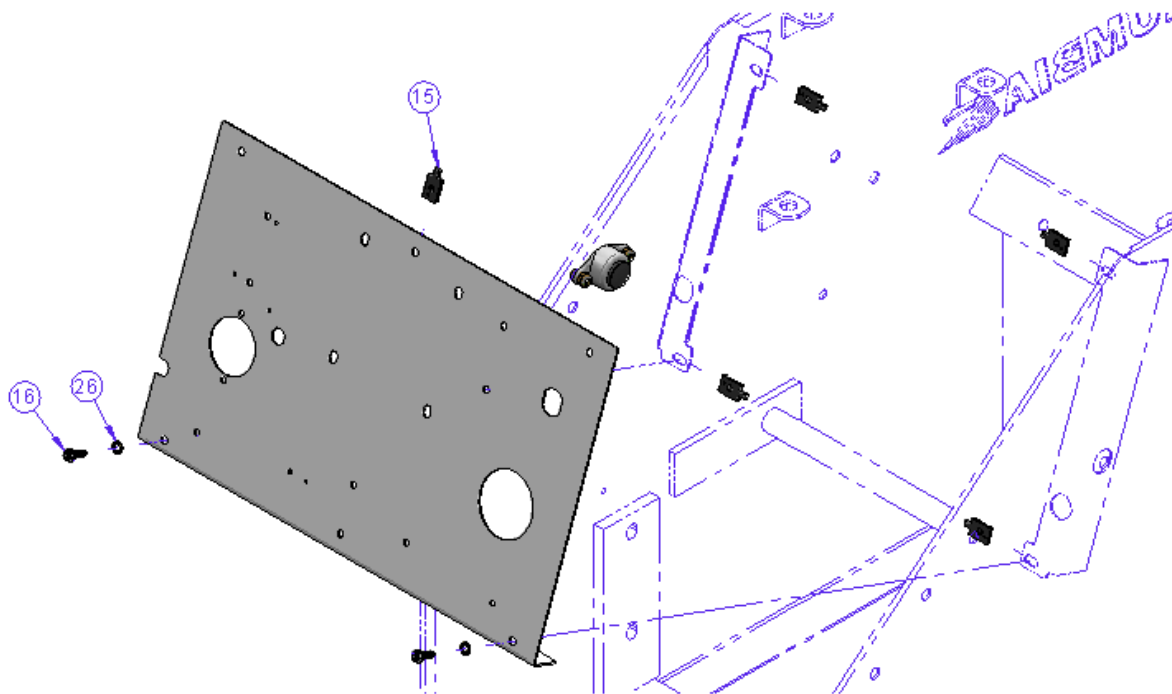
* Special Order

NOTE: Include VIN to ensure correct colors.

DRIVE SYSTEM WITH REVERSE - CR10



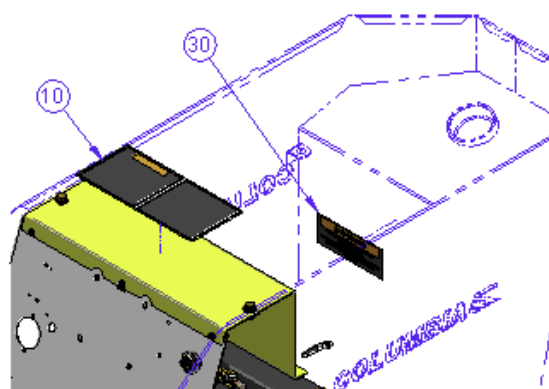
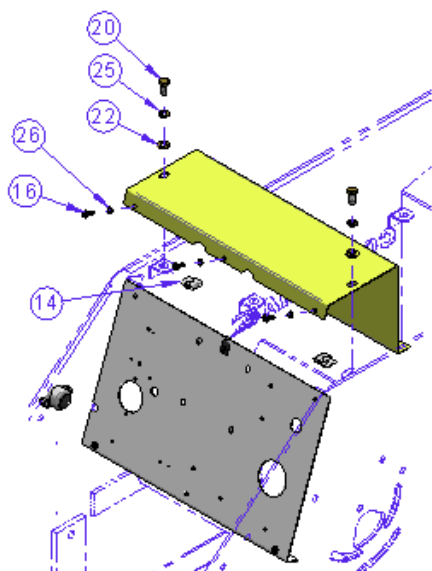
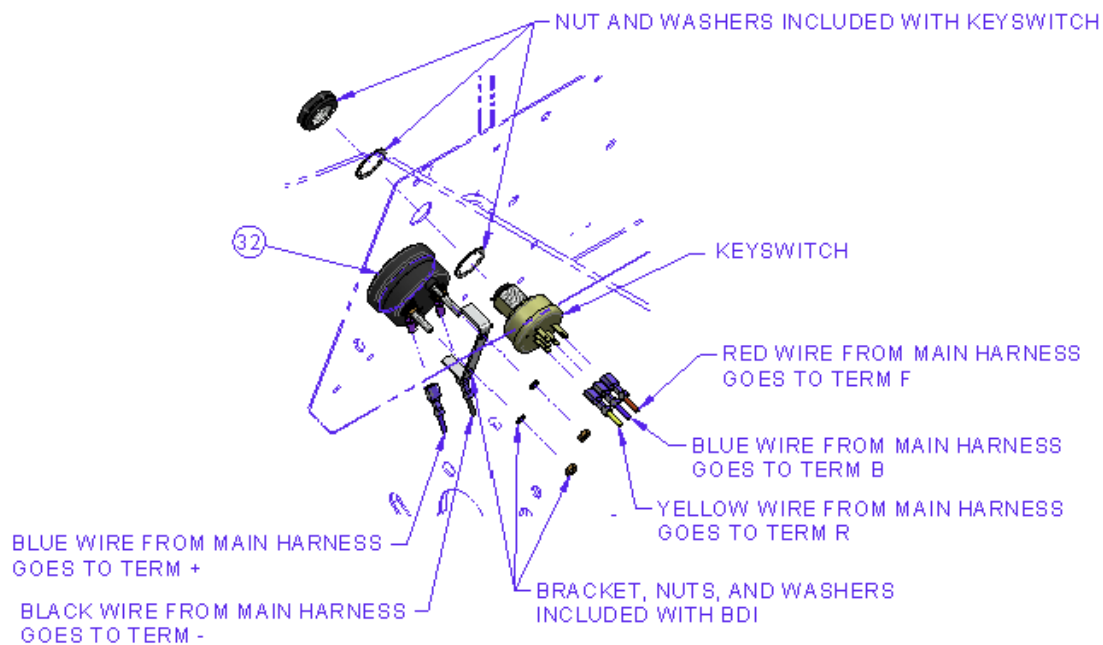
DRIVE SYSTEM WITH REVERSE - CR10 (Cont.)



TORQUE ALL MOTOR NUTS TO 100 IN/LBS
USE A FLAT OPEN WRENCH TO HOLD THE
STUD NUT WHEN APPLYING TORQUE

TORQUE CONTACTOR NUT TO 55 IN/LBS
USE A FLAT OPEN WRENCH TO HOLD THE
STUD NUT WHEN APPLYING TORQUE

DRIVE SYSTEM WITH REVERSE - CR10 (Cont.)



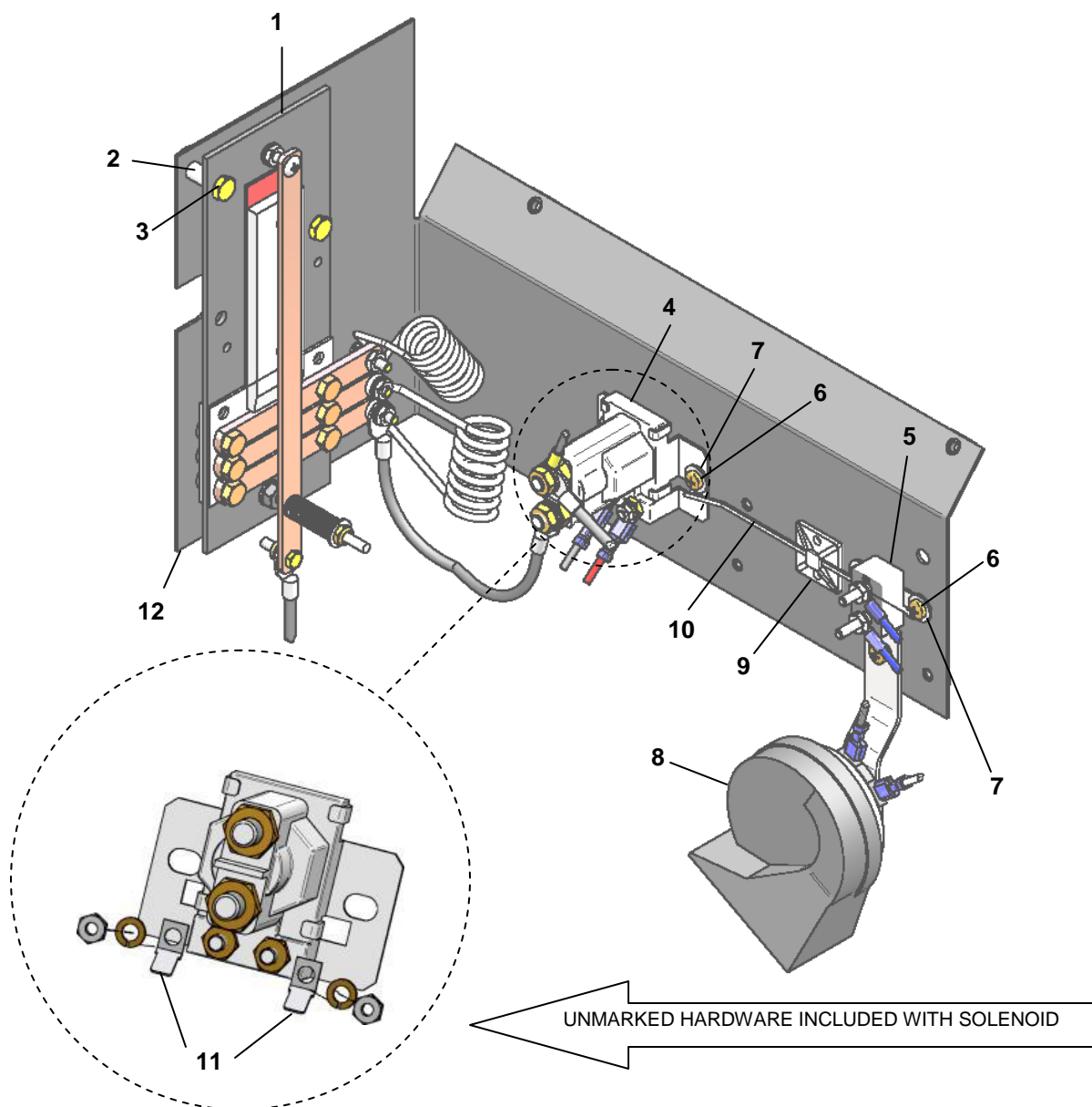
DRIVE SYSTEM WITH REVERSE - CR10 (Cont.)

ITEM	CPC P/N	DESCRIPTION	QTY	SEATS P/N
1	33401-00	KEY SPROCKET	1	461334
2	33409-00	CHAIN, #35, 55 LINK W/MASTER	1	461337
3	40300-00	DRIVE ARM ASSEMBLY	1	461420
4	*	CONTROL PANEL ASSEMBLY W/REVERSE	1	467339
5	*	BEEPER BRACKET	1	512193
6	708750	SCREW, M10X30, CL8 HHCS	4	708750
7	70447-90	CABLE, 6GA. X 14.00, 5/16 TERM	1	709033
8	71808-00	SWITCH, HORN BUTTON	1	709176
9	33400-00	SPROCKET, 13 T, 3/16 KIT #35	1	709645
10	53251-01	LABEL, OPERATOR/WARNING	1	709648
11	69400-00	MOTOR, TRACTION 12V	1	709653
12	7125	WASHER, M10, LOCK	4	709789
13	6052	WASHER, M10, 10MMX21MMX2.20MM	4	719004
14	11735	NUT, TINNERMAN J-TYPE	3	719537
15	11736	NUT, TINNERMAN, #10 U-TYPE	5	719538
16	2530	SCREW, #10X3/4 SHWH, T/S	5	719563
17	2592	SCREW, 10-24 X 1/2 PPHM	2	719566
18	3439	SCREW, HEX CAP 8MM X 1 1/4" X 20MM	1	719619
19	3787-B	SCREW, HHC 1/4-20 X 3/4", G5	2	719636
20	3987-BS	SCREW, 5/16-18 X .3/4" HHC G5	2	719642
21	5207-BS	SCREW, 5/16-18 X 2, PPH	1	719730
22	6702-B	WASHER, FLAT, 5/16"	2	719810
23	6703-B	WASHER 1/4"	3	719811
24	7036-B	WASHER, LOCK 1/4"	2	719834
25	7041-B	LOCK WASHER, 5/16"	3	719838
26	7118	WASHER #10, I-TOOTH	5	719841
27	7525	LOCKNUT, 5/16-18 HEX FLG, WHIZ	1	719864
28	7624	NUT, 10-24 NYLOCK	2	719870
29	7686	NUT, 1/4-20	1	719879
30	53283-00	BATTERY BOX DECAL	1	739546
31	71408-96A	AUDIBLE ALARM, 12/48 VDC	1	759831
32	75064-07	BDI METER 12V	1	759872

* Special Order

NOTE: Include VIN to ensure correct colors.

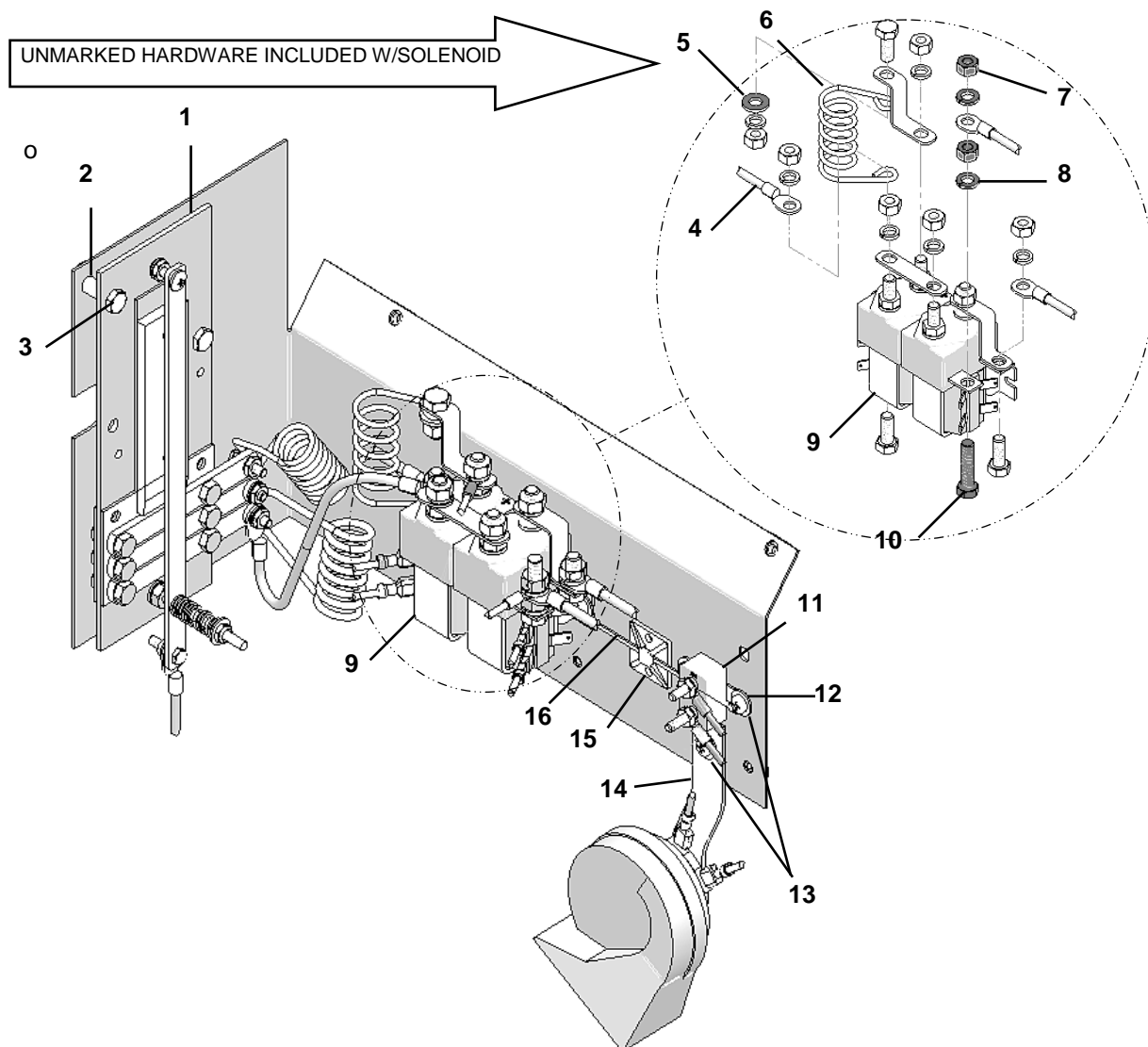
CONTROL PANEL ASSEMBLY - FORWARD OPTION - CR10



ITEM	CPC P/N	DESCRIPTION	QTY	SEATS P/N
1	69721-00	SPEED SWITCH CONTROL ASSEMBLY	1	463953
2	5710	SPACER ¼ X 5/8	2	739650
3	2551-W	SCREW, ¼-20X1	2	719564
4	71470-87	SOLENOID, 12V	1	709214
5	74591-96	CIRCUIT BREAKER, 20 AMP	1	709398
6	2592	SCREW, 10-24 X ½	5	719566
7	6031	WASHER 3/16"	5	719777
8	69001-76A	HORN, 12V	1	709089
9	10020	CABLE TIE MOUNTING BRACKET	1	719503
10	10008	CABLE TIE, 5 ¾"	1	719501
11	32675-08	TERMINAL, #10 STUD TO ¼ MALE TAB	2	719825
12	*	COMPONENT PANEL	1	306013

* SPECIAL ORDER

CONTROL PANEL ASSEMBLY - FORWARD REVERSE OPTION - CR10



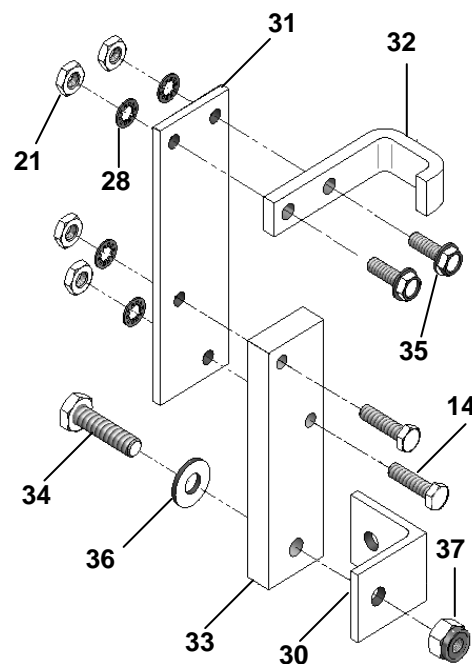
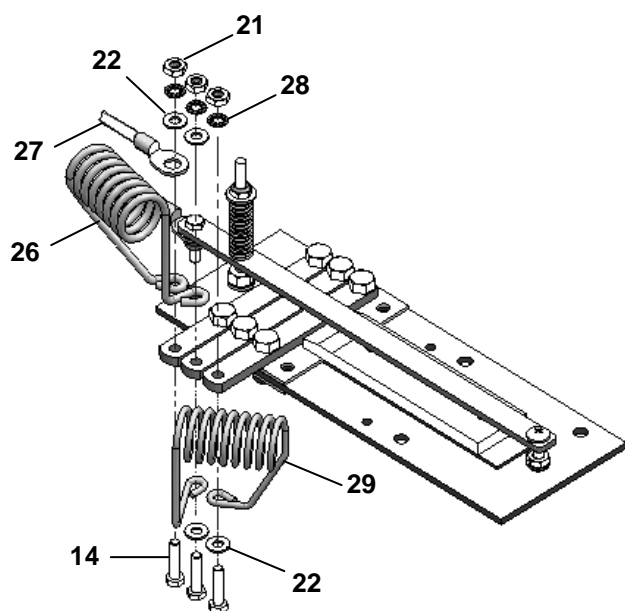
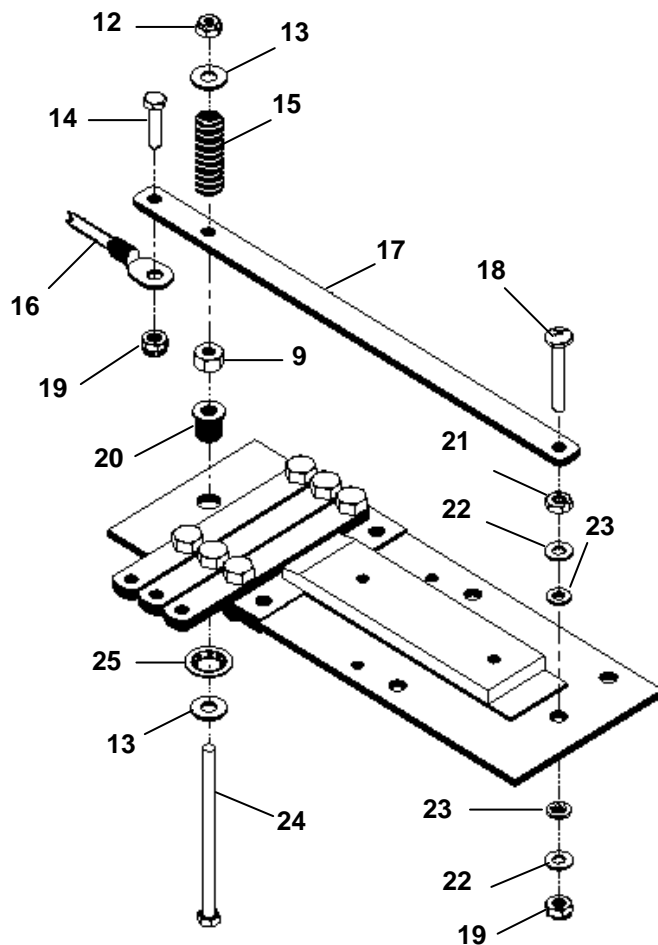
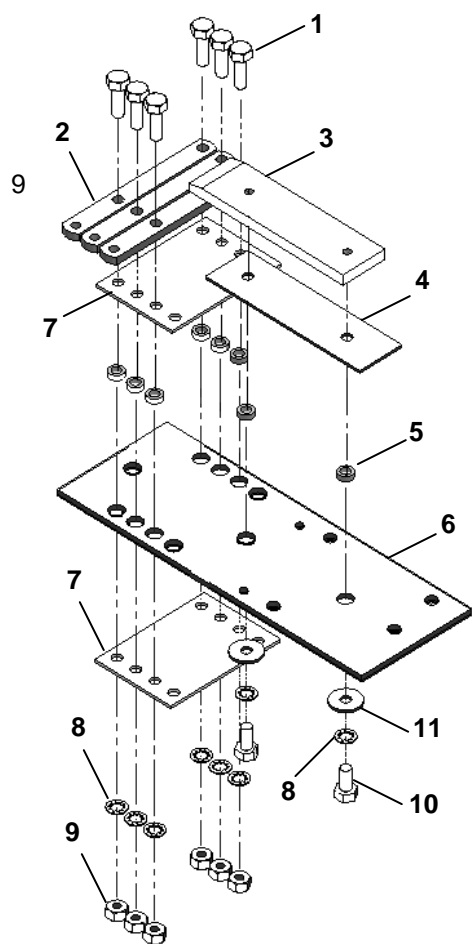


CONTROL PANEL ASSEMBLY - FORWARD REVERSE OPTION - CR10

ITEM	CPC P/N	DESCRIPTION	QTY	SEATS P/N
1	69721-00	SPEED SWITCH CONTROL ASSEMBLY	1	463953
2	5710	SPACER ¼ X 5/8	2	739650
3	2551-W	SCREW, ¼-20X1	2	719564
4	70447-90	CABLE, 6GA X 14", 5/16" TERMINAL	3	709033
5	6702-B	WASHER, 5/16"	1	719810
6	69824-00	RESISTANCE COIL, FWD/REV SWITCH	1	463975
7	7748-B	NUT, 5/16-24	2	719896
8	7041-B	LOCK WASHER, 5/16"	2	719838
9	69823-00	SOLENOID, DOUBLE – 12V COILS	3	709399
10	1011	SCREW, 5/16-18X1 ¼	1	719507
11	74591-96	CIRCUIT BREAKER, 20 AMP	1	709398
12	2592	SCREW, 10-24 X ½	5	719566
13	6031	WASHER 3/16	5	719777
14	69001-76A	HORN, 12V	1	709089
15	10020	CABLE TIE MOUNTING BRACKET	1	719503
16	10008	CABLE TIE, 5 ¾"	1	719501
17*	71408-96A	AUDIBLE ALARM	1	759831
N/A*	90116-00	KIT, FORWARD/REVERSE (Contains Items 4, 6, 9 & 17)	1	190402U

* NOT SHOWN

SPEED CONTROL SWITCH - CR10

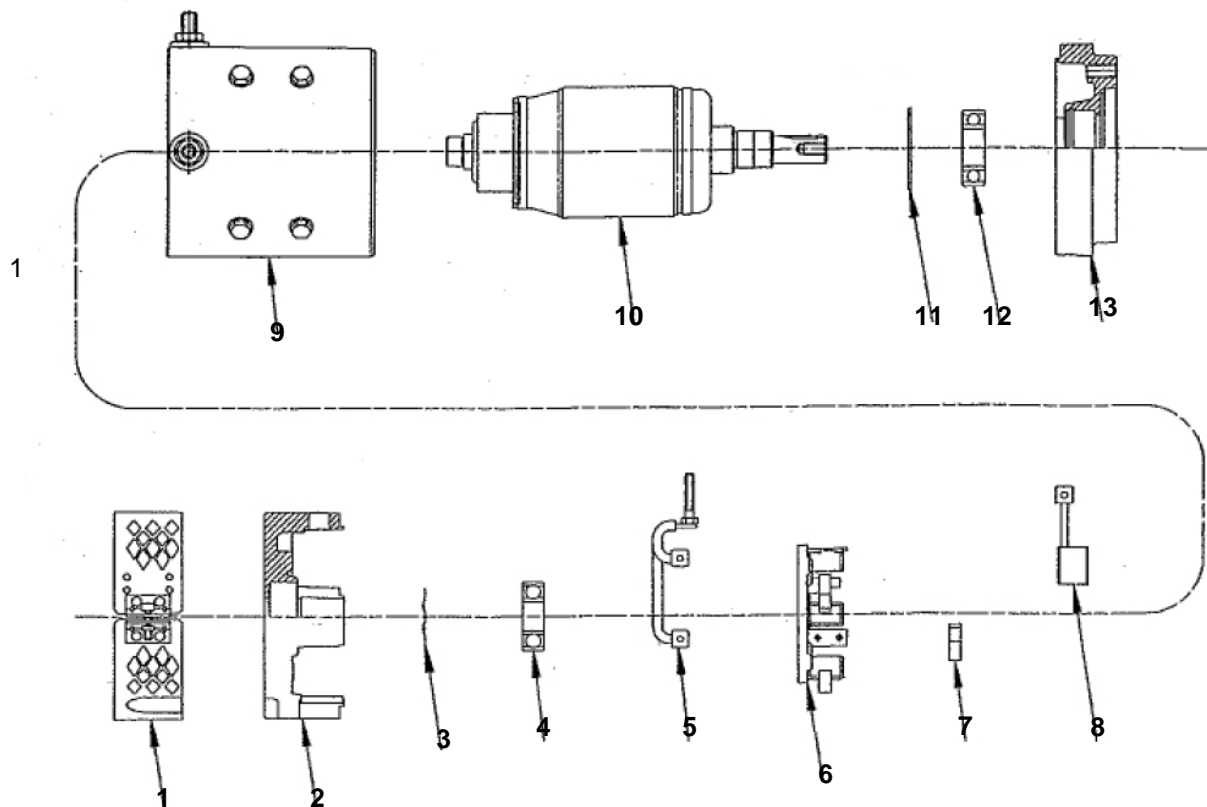




SPEED CONTROL SWITCH - CR10 (Cont.)

ITEM	CPC P/N	DESCRIPTION	QTY	SEATS P/N
1	3787-B	SCREW, HHC 1/4-20 X 3/4"	6	719636
2	40324-00	CONTACT BAR, 4-3/8"	3	709202
3	40321-00	NEUTRAL BAR, M3A SWITCH	1	510355
4	69730-00	INSULATOR, RED	1	511137
5	69727-00	SLEEVE, INSULATING 1/4 X 3/8	8	709036
6	71827-08	CPC SWITCH BASE	1	510363
7	69733-00	INSULATOR, WHITE	2	709366
8	7124	WASHER, 1/4 STAR/INTERNAL LOCK	8	707855
9	7688-B	NUT, 1/4-20 BLACK	7	719880
10	3728	SCREW, HEX CAP 1/4-20 X 1/2 HT	2	719629
11	6036	WASHER, FIBER 3/4 X 1/4 X 1/16	2	709364
12	7626-W	NUT, NYLOK #10-32	1	719871
13	6031	WASHER, 3/16"	2	719777
14	2339	SCREW, MACHINE 10-24 X 3/4	6	719551
15	11831	SPRING, #13 7/16 X 2 1/4"	1	709439
16	70443-01	CABLE, 6 GA X 18"	1	709215
17	40327-00	CONTACT BAR, SLIDER	1	719235
18	1005	SCREW, 10-24X1 1/4	1	719505
19	7624	NUT, 10-24 NYLOCK	2	719870
20	10511	BEARING, NYLON	1	709414
21	7620-W	NUT, HEX #10-24	8	719869
22	6034	WASHER, BRASS #10S	7	719778
23	10510	BEARING, NYLON	2	709362
24	1007	SCREW, MACHINE 10-32 X 3"	1	719506
25	11737	NUT, 3/8, PUSH ON	1	707979
26	30220-00	RESISTANCE COIL (#7 NICROME WIRE)	1	461261
27	70099-88	CABLE, 4 GA X 8.75", 5/16" TERM	1	709004
28	7118	WASHER, #10 EXTERNAL TOOTH	7	719841
29	30223-00	RESISTANCE COIL (#9 NICROME WIRE)	1	461264
30	40309-00	DRIVE ARM BRACKET	1	510356
31	40303-00	DRIVE ARM	1	510357
32	40312-00	L-BRUSH	1	709429
33	40306-00	DRIVE ARM, LOWER	1	709438
34	2551-W	SCREW 1/4-20 X 1	1	719564
35	2685-W	SCREW 10-24 X 5/8	2	719586
36	6703-B	WASHER 1/4	1	719811
37	7686	NUT, 1/4-20	1	719879
38	69826-00	SWITCH PANEL KIT (Includes Items 38 & 39)	1	463976
39	69721-00	SPEED SWITCH CONTROL (Includes Items 1 thru 29)	1	463953
40	40300-00	DRIVE ARM ASSEMBLY (Includes items 14, 21, 28, & 30 thru 37)	1	461420

TRACTION MOTOR - CR10



ITEM	CPC P/N	DESCRIPTION	QTY	SEATS P/N
1	N/A	HEADBAND, INSPECTION	1	N/A
2	N/A	COMMUTATOR END FRAME	1	N/A
3	83285-89A	SPRING WASHER	1	719158
4	N/A	BEARING BR-204	1	N/A
5	N/A	BRUSH LEAD ASSEMBLY	1	N/A
6	N/A	BRUSH BOX ASSEMBLY	1	N/A
7	11839	BRUSH SPRING	4	729073
8	83283-03	BRUSH	4	719276
9	N/A	FRAME & FIELD ASSEMBLY	1	N/A
10	N/A	ARMATURE ASSEMBLY	1	N/A
11	N/A	RETAINING RING	1	N/A
12	83286-89A	BEARING BR-205	1	749602
13	N/A	DRIVE END HEAD	1	N/A
N/A	69400-00	MOTOR, TRACTION 12V	1	709653

**DID YOU
KNOW?**

CartPros directs you to the right part using the part numbers from this manual. Enter the part number into our search box and it will find the part you are looking for.

**GET STARTED
HERE**



<https://CartPros.com/f.html>



CR 10

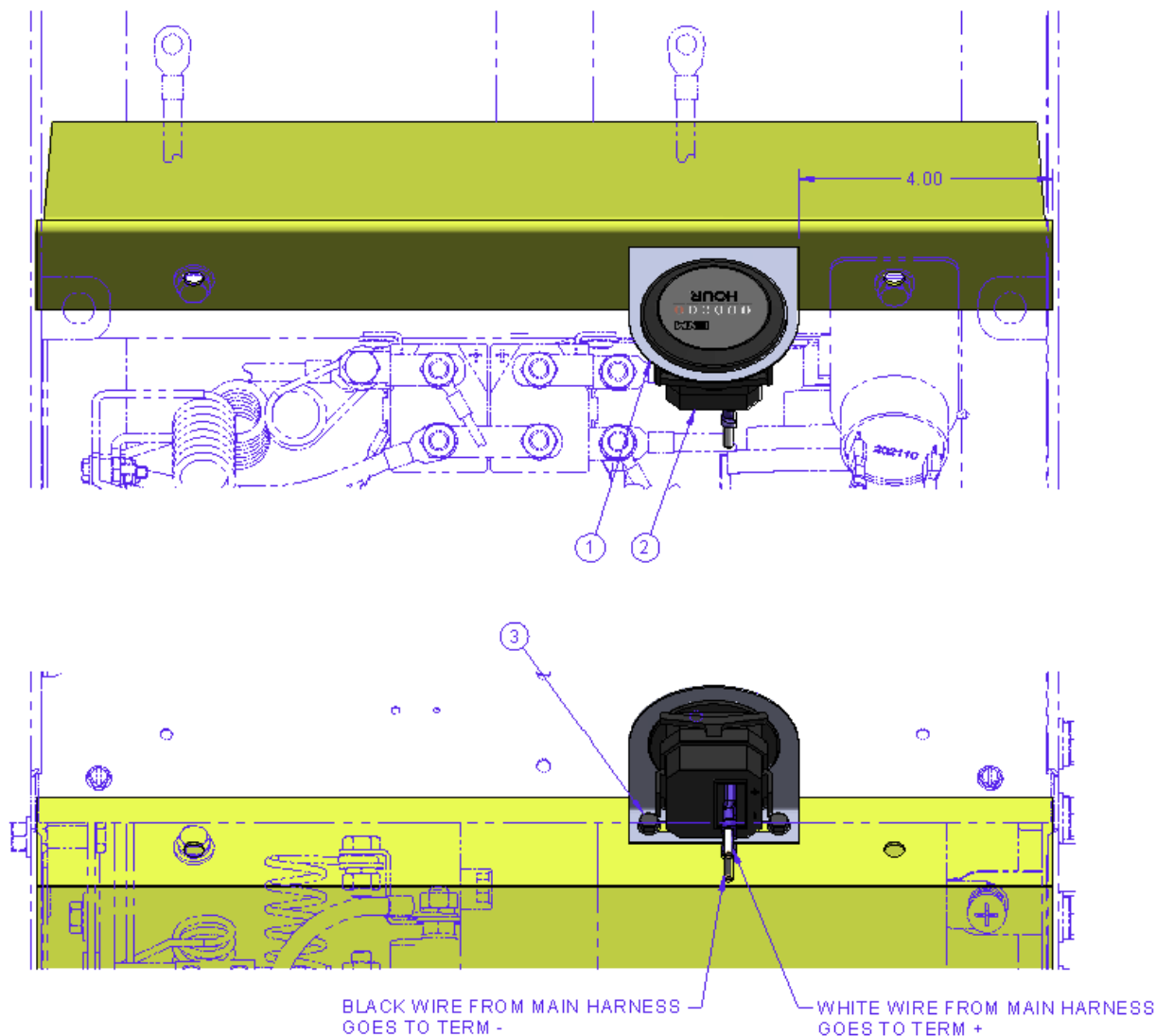
PARTS MANUAL

SECTION 3 ELECTRICAL



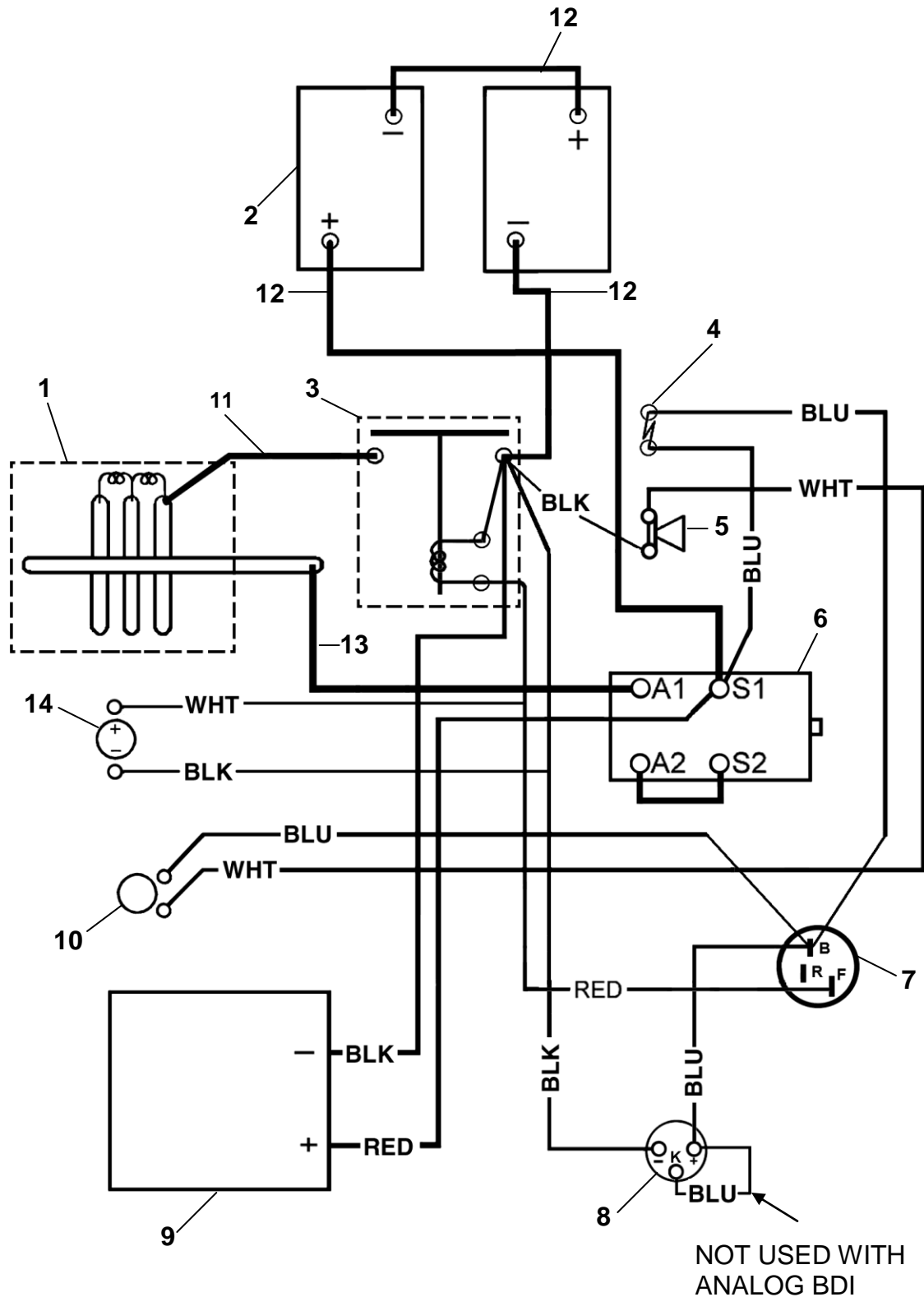
Find replacement parts for your cart faster at **CartPros.com**

HOUR METER INSTALLATION - CR10



ITEM	CPC P/N	DESCRIPTION	QTY	SEATS P/N
1	75034-87A	BRACKET	1	512841
2	75033-91A	HOUR METER 10-80 VDC	1	709452
3	2653-B	SCREW, 10-16X3/4 HWH, TEK	2	719583

ELECTRIC WIRING DIAGRAM – FORWARD ONLY - CR10



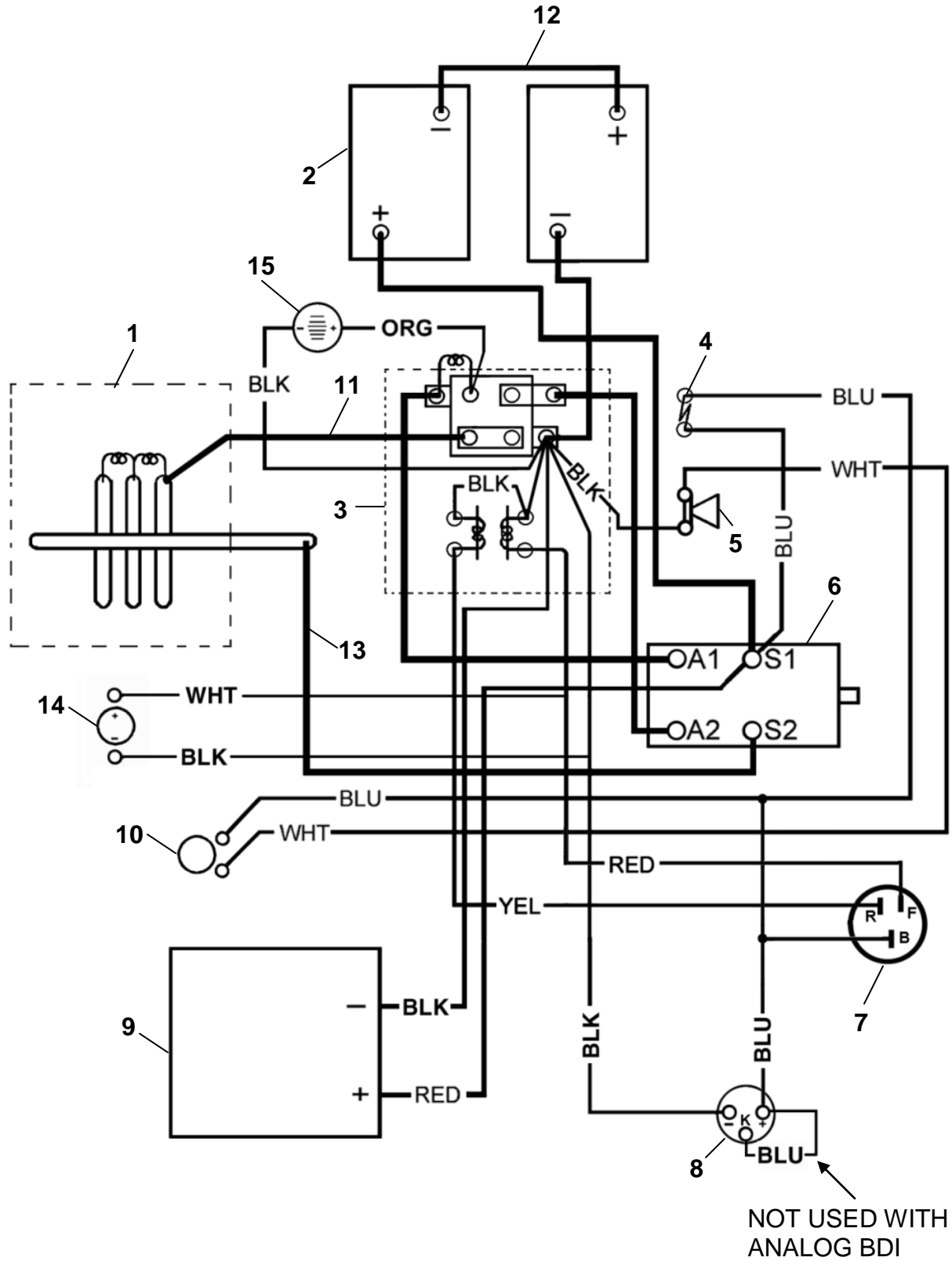
ELECTRIC WIRING DIAGRAM – FORWARD ONLY - CR10

ITEM	CPC P/N	DESCRIPTION	QTY	SEATS P/N
1	**	CONTROL PANEL ASSY	1	467338
2	66014-03	BATTERY, 6V, (US2200)	2	719229
	66005-03	BATTERY, 6V, (US145)	2	719231
3	69709-00	SOLENOID, 12V	1	709744
4	74591-96	CIRCUIT BREAKER, 20 AMP	1	709398
5	69001-76A	HORN, 12V	1	709089
6	69400-00	MOTOR, TRACTION 12V	1	709653
7A	71730-01	KEY, SWITCH & HARDWARE A	1	709040
7B	71730-01B	KEY, SWITCH & HARDWARE B	1	719297
7C	71730-01C	KEY, SWITCH & HARDWARE C	1	719298
7D	71730-01D	KEY, SWITCH & HARDWARE D	1	719299
7E	71730-01E	KEY, SWITCH & HARDWARE E	1	719300
*	71731-01	KEY SET A	1	749184
*	71731-01B	KEY SET B	1	719301
*	71731-01C	KEY SET C	1	719302
*	71731-01D	KEY SET D	1	719303
*	71731-01E	KEY SET E	1	719304
*	71767-05	KEY SET A WITH NON-REMOVABLE COVER (Can only be used with Item 7A)	1	719432
8	75064-07	BDI METER 12V	1	759872
9	66600-00	CHARGER, 12V BUILT-IN	1	709652
10	71808-00	SWITCH, HORN BUTTON	1	709176
11	70099-88	CABLE 4 GA (SPEED SWITCH TO SOLENOID) 8.75	1	709004
12	70447-90	CABLE, 6 GA 14"	3	709033
13	70443-01	CABLE, 6 GA (SPEED SWITCH TO A1) 18"	1	709215
14	75033-91A	HOUR METER		709452
*	69703-01	MAIN WIRE HARNESS	1	709654

* NOT SHOWN

** SPECIAL ORDER

ELECTRIC WIRING DIAGRAM – FORWARD & REVERSE - CR10





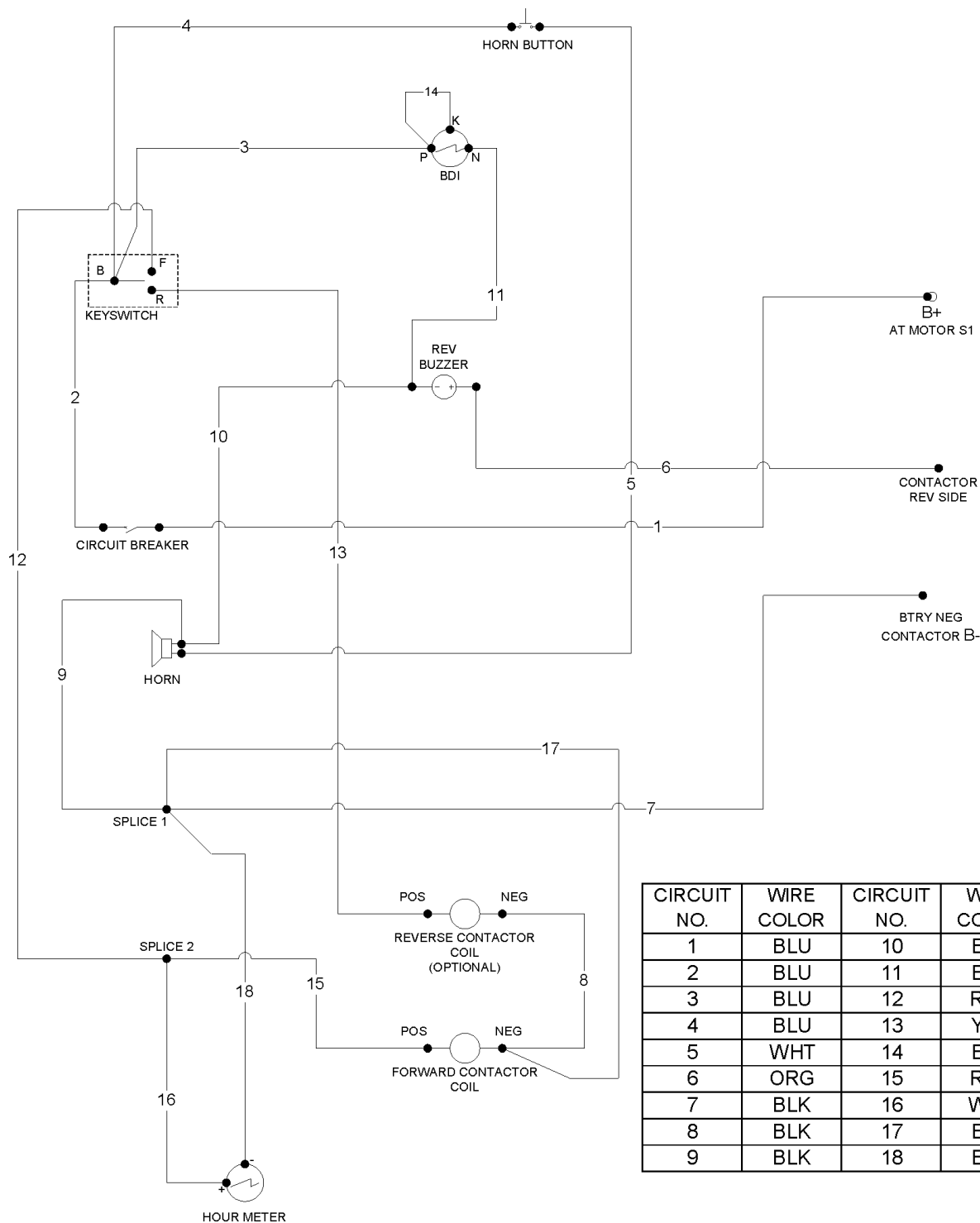
ELECTRIC WIRING DIAGRAM – FORWARD & REVERSE - CR10

ITEM	CPC P/N	DESCRIPTION	QTY	SEATS P/N
1	*	CONTROL PANEL ASSY W/REV	1	467339
2	66014-03	BATTERY, 6V, (US2200)	2	719229
	66005-03	BATTERY, 6V, (US145)	2	719231
3	69823-00	SOLENOID, DOUBLE 12V	1	709399
4	74591-96	CIRCUIT BREAKER, 20 AMP	1	709398
5	69001-76A	HORN, 12V	1	709089
6	69400-00	MOTOR, TRACTION 12V	1	709653
7A	71730-01	KEY, SWITCH & HARDWARE A	1	709040
7B	71730-01B	KEY, SWITCH & HARDWARE B	1	719297
7C	71730-01C	KEY, SWITCH & HARDWARE C	1	719298
7D	71730-01D	KEY, SWITCH & HARDWARE D	1	719299
7E	71730-01E	KEY, SWITCH & HARDWARE E	1	719300
*	71731-01	KEY SET A	1	749184
*	71731-01B	KEY SET B	1	719301
*	71731-01C	KEY SET C	1	719302
*	71731-01D	KEY SET D	1	719303
*	71731-01E	KEY SET E	1	719304
*	71767-05	KEY SET A WITH NON-REMOVABLE COVER (Can only be used with Item 7A)	1	719432
8	75064-07	BDI METER 12V	1	759872
9	66600-00	CHARGER, 12V BUILT-IN	1	709652
10	71808-00	SWITCH, HORN BUTTON	1	709176
11	70099-88	CABLE 4 GA (SPEED SWITCH TO SOLENOID) 8.75	1	709004
12	70447-90	CABLE, 6 GA 14"	2	709033
13	70443-01	CABLE, 6 GA (SPEED SWITCH TO A1) 18"	1	709215
14	75033-91A	HOUR METER	1	709452
15	71408-96A	AUDIBLE ALARM	1	759831
16*	69703-01	MAIN WIRE HARNESS	1	709654

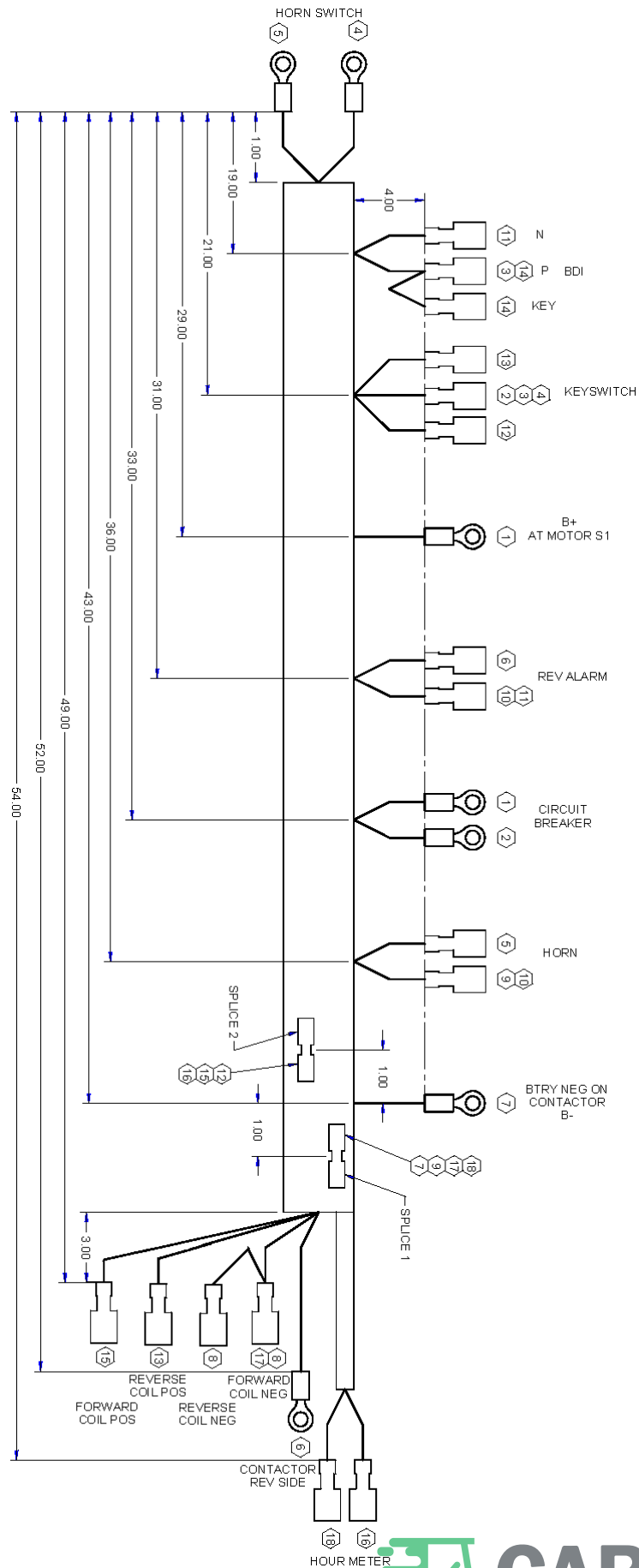
* NOT SHOWN

* SPECIAL ORDER

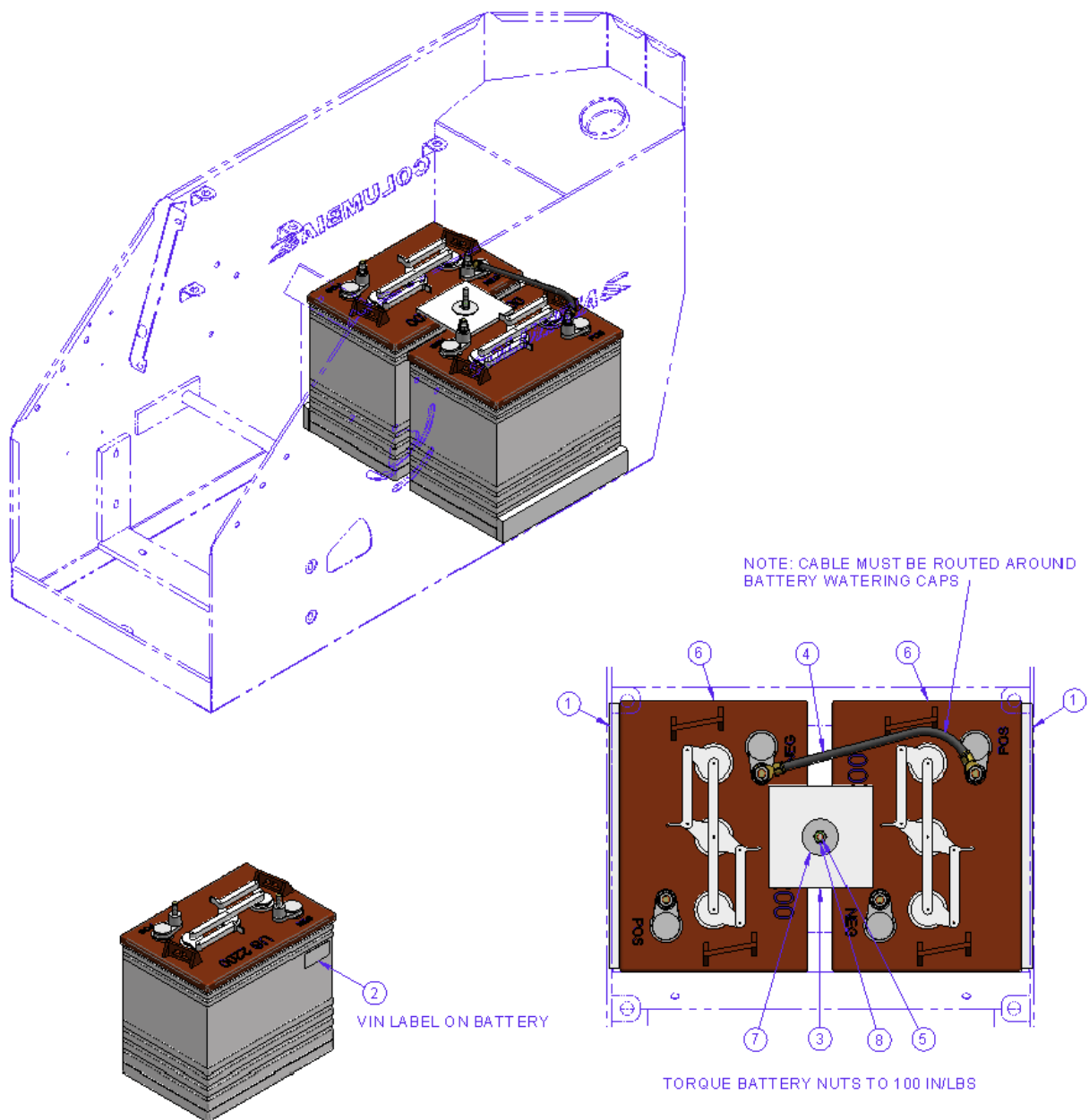
MAIN WIRE HARNESS SCHEMATIC - CR10



MAIN WIRE HARNESS SCHEMATIC - CR10



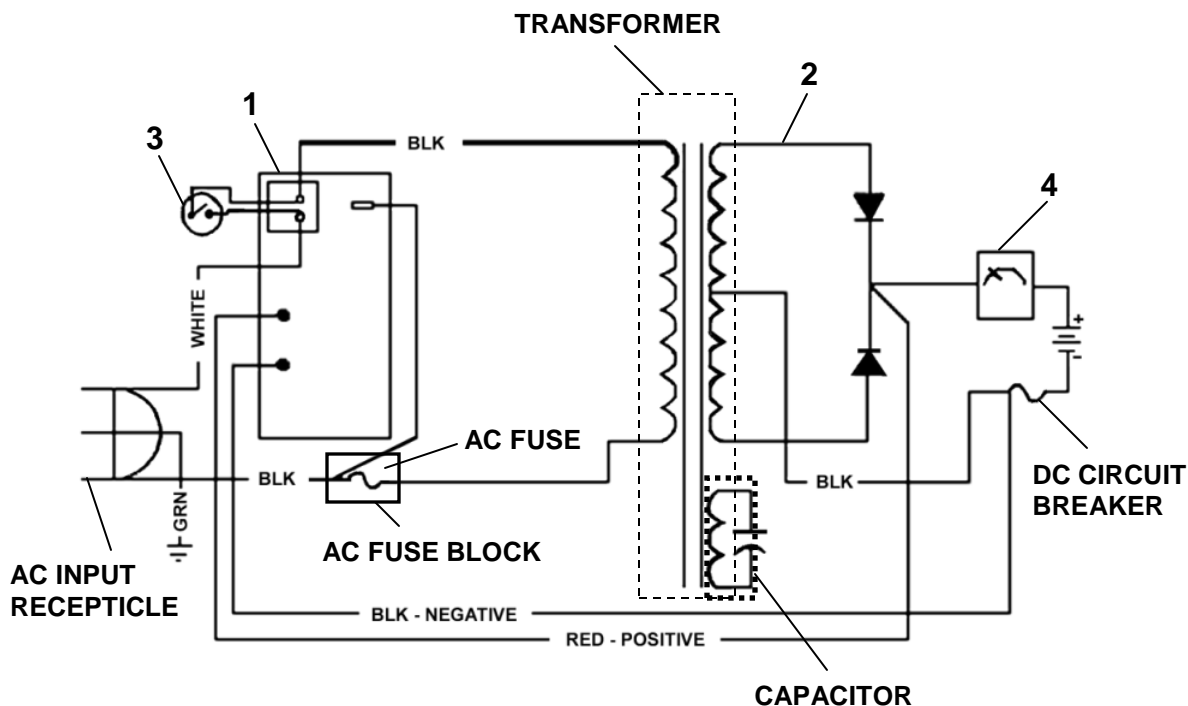
BATTERY AND HARDWARE - CR10



ITEM	CPC P/N	DESCRIPTION	QTY	SEATS P/N
1	106011	BATTERY SEPARATOR	2	510365
2	66007-86	LABEL, SMALL VIN	2	512059
3	66362-96	PLATE, HOLD DOWN	1	513002
4	70099-88	CABLE, 4 GA X 8.75, 5/16 TERM	1	709004
5	66561-90A	ROD, HOLD DOWN	1	709059
6	66014-03	BATTERY, 6V DEEP CYCLE US2200	2	719229
6A*	66005-03	BATTERY, 6V DEEP CYCLE US 145	2	719231
7	6256	WASHER, FLAT, STAINLESS .28X.375X.06	1	719786
8	7680	NUT, 1/4-20 STAINLESS NYLON	1	719876

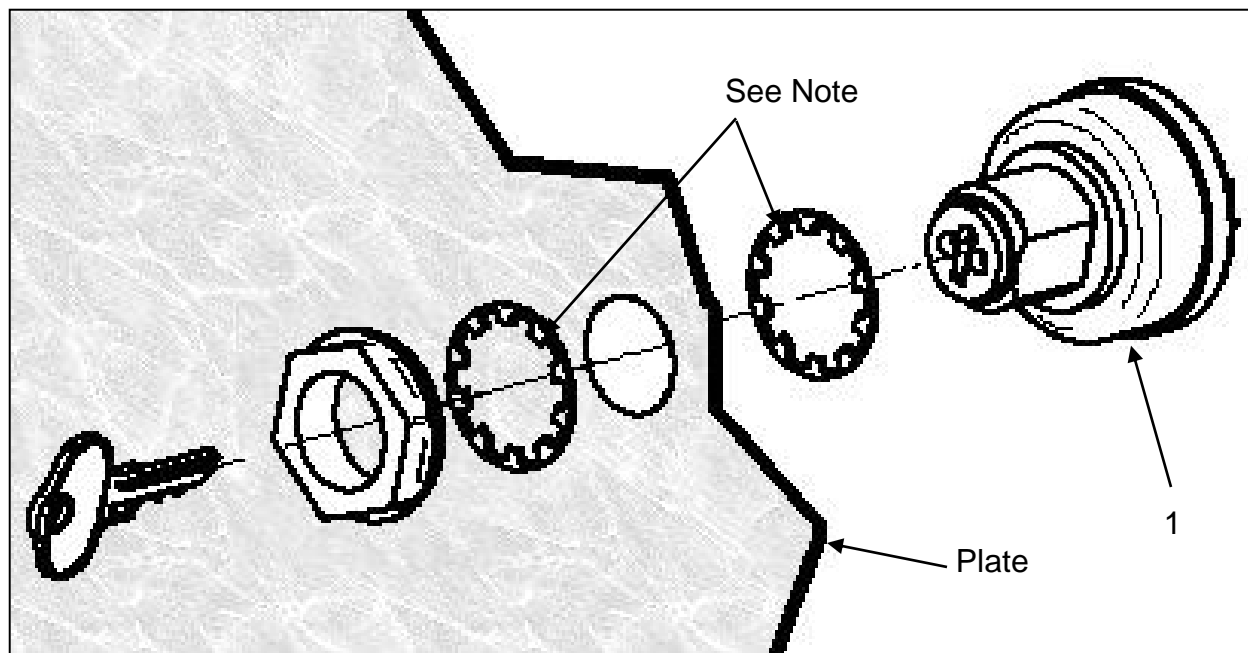
* NOT SHOWN

BATTERY CHARGER SCHEMATIC - CR10



ITEM	CPC P/N	DESCRIPTION	QTY	SEATS P/N
1	66622-00	AUTO-START CONTROL BOARD	1	739927
2	66625-00	RECTIFIER	1	739928
3	66630-00	LOW BATTERY RESET SWITCH	1	739930
4	75064-07	STATE OF CHARGE METER	1	759872
*	66493-67A	AC POWER CORD	1	709890
	66600-00	CHARGER, COMPLETE W/CORD	1	709652

KEYSWITCH INFORMATION- CR10



ITEM	CPC P/N	DESCRIPTION	QTY	SEATS P/N
1A	71730-01	KEYSWITCH, UNIVERSAL A W/HARDWARE	1	709040
1B	71730-01B	KEYSWITCH, UNIVERSAL B W/HARDWARE	1	719297
1C	71730-01C	KEYSWITCH, UNIVERSAL C W/HARDWARE	1	719298
1D	71730-01D	KEYSWITCH, UNIVERSAL D W/HARDWARE	1	719299
1E	71730-01E	KEYSWITCH, UNIVERSAL E W/HARDWARE	1	719300
*2	71767-05	NON-REMOVABLE KEY ASSEMBLY	1	719432

* NOT SHOWN

NOTE:

1. Vehicles with circular keyswitch holes must have serrated washers installed on each side of the charger plate. The use of one serrated washer may result in rotation of the switch. Contact Columbia Parts Department for an additional washer.
2. Replacement keyswitches include two serrated washers