

**DID YOU
KNOW?**

CartPros directs you to the right part using the part numbers from this manual. Enter the part number into our search box and it will find the part you are looking for.

**GET STARTED
HERE** →

<https://CartPros.com/f.html>

29177-G01



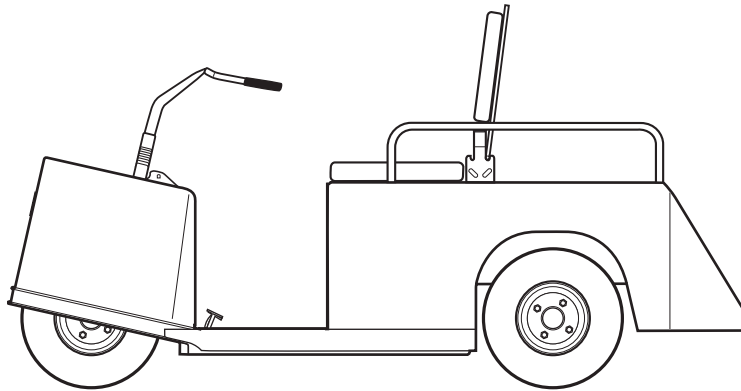
A Textron Company

CUSHMAN[®]

A Textron Company



SERVICE PARTS MANUAL



ELECTRIC POWERED THREE WHEEL SERVICE VEHICLE

STARTING MODEL YEAR: 2004

**DID YOU
KNOW?**

CartPros directs you to the right part using the part numbers from this manual. Enter the part number into our search box and it will find the part you are looking for.

**GET STARTED
HERE** →

<https://CartPros.com/f.html>

SERVICE PARTS MANUAL

ELECTRIC POWERED THREE WHEEL SERVICE VEHICLE

**MINUTE MISER™
INDUSTRIAL 835**

E-Z-GO Division of Textron Inc., reserves the right to make design changes without obligation to make these changes on units previously sold and the information contained in this manual is subject to change without notice.

E-Z-GO Division of Textron Inc., is not liable for errors in this manual or for incidental or consequential damages that result from the use of the material in this manual.

CUSTOMER SERVICE DEPARTMENT IN USA PHONE: 1-800-241-5855 FAX: 1-800-448-8124

OUTSIDE USA PHONE: 010-1-706-798-4311, FAX: 010-1-706-771-4609

E-Z-GO DIVISION OF TEXTRON, INC., P.O.BOX 388, AUGUSTA, GEORGIA USA 30903-0388

NOTES

To obtain a copy of the limited warranty applicable to the vehicle, call or write a local Distributor, authorized Branch or the Warranty Department with vehicle serial number and manufacturer code.

The use of non Original Equipment Manufacturer (OEM) parts may void the warranty.

Overfilling of batteries may void the warranty.

BATTERY PROLONGED STORAGE

All batteries will self discharge over time. The rate of self discharge varies depending on the ambient temperature and the age and condition of the batteries.

A fully charged battery will not freeze in winter temperatures unless the temperature falls below -75° F (-60° C).

As with all electric vehicles, the batteries must be checked and recharged as required or at a minimum of 30 day intervals.

TABLE OF CONTENTS

| SECTION | Page No. |
|---|-----------------|
| HOW TO USE THE SERVICE PARTS MANUAL | v |
| ILLUSTRATED PARTS BREAKDOWN | vii |
| BODY & REAR SUSPENSION | A-1 |
| SEATING | B-1 |
| BRAKE PEDAL & LINKAGE | C-1 |
| SPEED CONTROL PEDAL | D-1 |
| FORK, HUB & HANDLEBARS | E-1 |
| DIFFERENTIAL | F-1 |
| ELECTRICAL COMPONENTS | G-1 |
| MOTOR | H-1 |
| STEERING WHEEL ACCESSORY | J-1 |
| BATTERY CHARGER | K-1 |
| EE COMPONENTS | L-1 |
| ACCESSORIES | M-1 |

TABLE OF CONTENTS

Notes: _____

HOW TO USE THE SERVICE PARTS MANUAL

This manual is divided into several sections:

GENERAL INFORMATION

- TABLE OF CONTENTS
- HOW TO USE THE SERVICE PARTS MANUAL

ILLUSTRATED PARTS BREAKDOWN

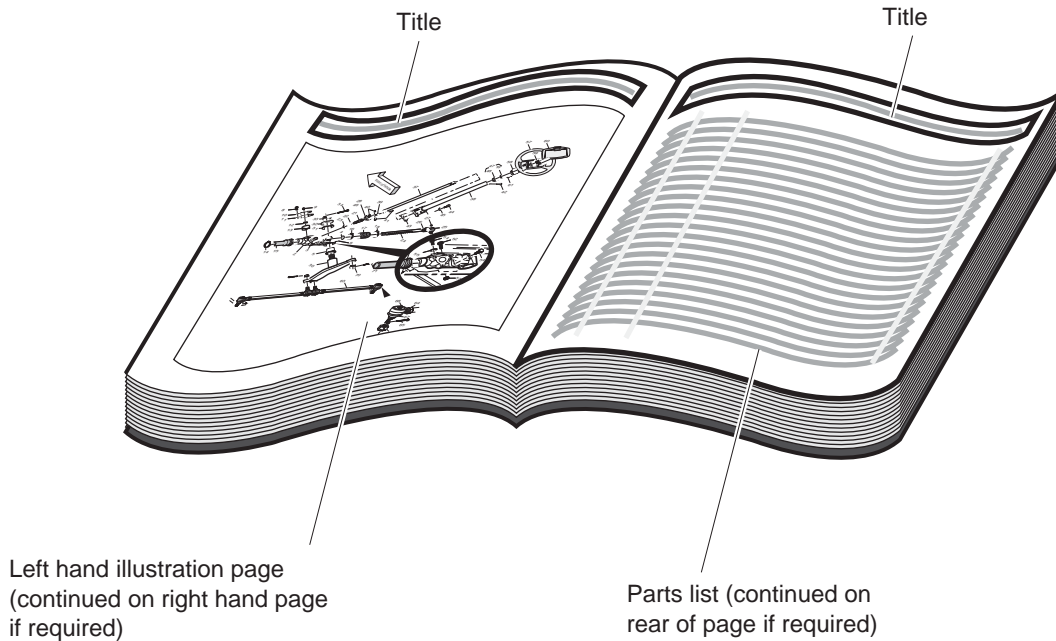
- Contains illustrations and parts lists for all systems of the vehicle.

USE OF THE MANUAL

To use this manual, consult the TABLE OF CONTENTS (page iii) to locate the information or illustration required.

Introduction of some revisions varies due to supply of components; therefore, it is possible that various combinations of components may be found that are not directly reflected by each illustration. Consult the illustration that best suits your situation. Locate the serial number plate (see BODY located in the Illustrated Parts Breakdown section of this manual for its location) and note the complete number shown on the plate. It is important that the serial number of your vehicle and its model number be supplied to Service Parts when ordering any replacement components.

HOW TO USE THE SERVICE PARTS MANUAL



1. WHEN THE PART NUMBER IS NOT KNOWN

- Determine the function and application of the part required. Turn to the INDEX OF MAJOR COMPONENTS and select the most appropriate component description.
- Turn to the page number indicated and locate the part description in the parts list. Read the full accompanying description for specific information regarding the part that was not shown in the index.
- From the parts list, obtain the item number assigned to it and confirm that the part selected is correct by verifying it with the pictorial representation on the illustrated page.

Should an asterisk (*) appear in the part number column on the parts list page, read upwards until a part number is found. The part number is the lowest assembly sold by Service Parts. The asterisk (*) indicates that the part depicted is not available for purchase.

NOTE: Descriptions are indented under the assembly that they are used on. That assembly is, in turn listed under the assembly that it is used on. This process is repeated until the highest final assembly is reached.

To facilitate the maintenance and repair of the vehicle, a Technician's Repair and Service Manual is available from the Service Parts Department.

**DID YOU
KNOW?**

CartPros directs you to the right part using the part numbers from this manual. Enter the part number into our search box and it will find the part you are looking for.

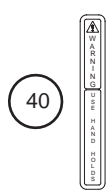
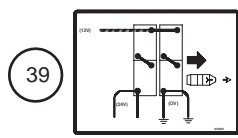
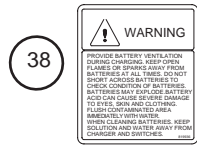
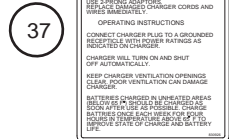
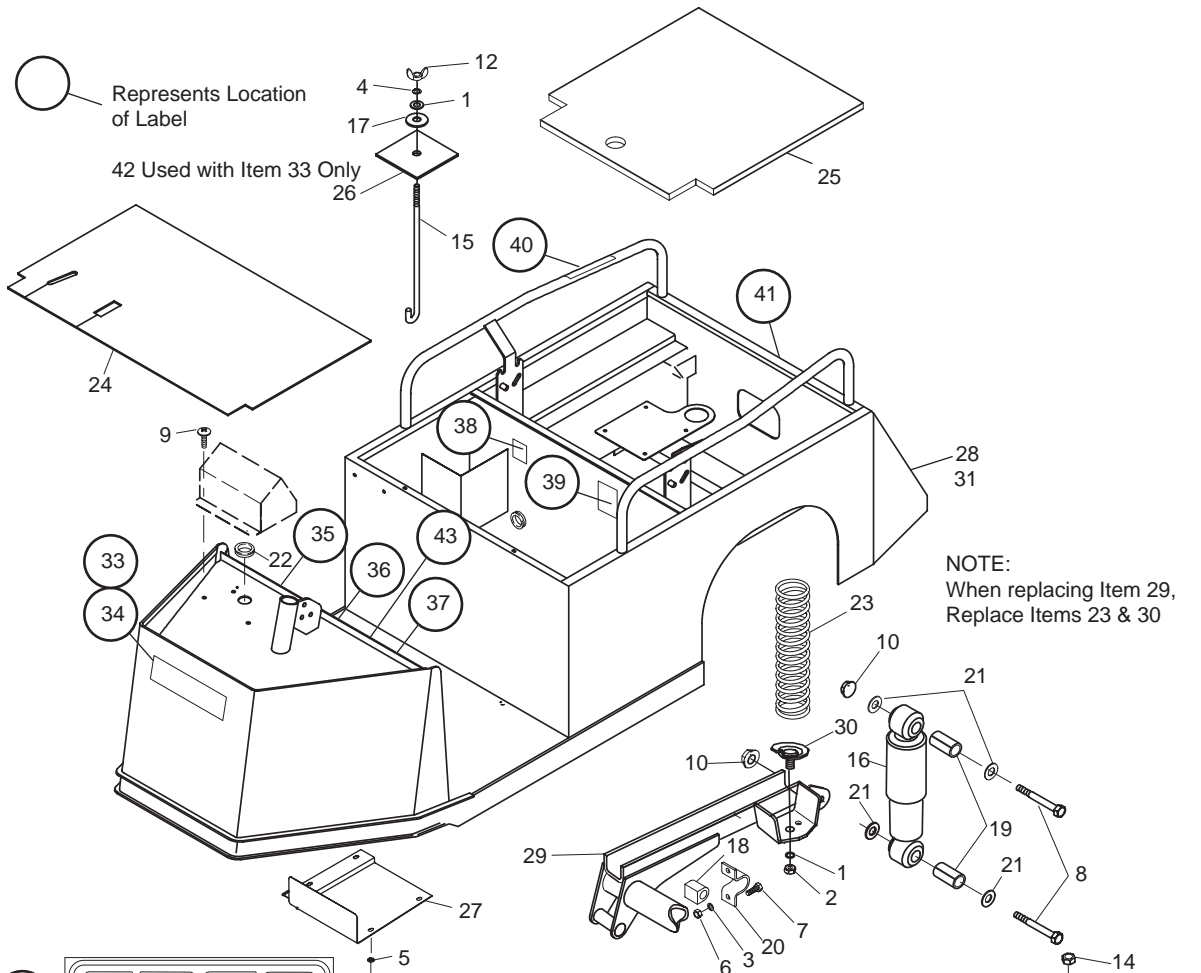
**GET STARTED
HERE** →

<https://CartPros.com/f.html>

ILLUSTRATED PARTS BREAKDOWN

ILLUSTRATED PARTS BREAKDOWN

BODY & REAR SUSPENSION



43 Serial Number Label Not Shown



BODY & REAR SUSPENSION

| ITEM | PART NO. | 1 2 3 4 5 | DESCRIPTION | QTY. |
|------|----------|-----------|--------------------------------|------|
| 1 | 103867 | | WASHER, 5/16" | 3 |
| 2 | 120166 | | LOCK WASHER, 1/2" | 6 |
| 3 | 120177 | | LOCK WASHER, 3/8" | 4 |
| 4 | 306325 | | LOCK WASHER, 5/16" | 1 |
| 5 | 306396 | | LOCK WASHER, 1/4" | 4 |
| 6 | 306562 | | NUT, 3/8-16 | 4 |
| 7 | 306835 | | SCREW, 3/8-16 X 1 1/4" L | 4 |
| 8 | 311392 | | SCREW, 7/16-14 X 2" L | 2 |
| 9 | 548013 | | SCREW, 1/4-20 X 1/2" PTH | 2 |
| 10 | 548912 | | NUT, LOCK 7/16-14 | 2 |
| 11 | 800026 | | SCREW, 1/4-20 X 3/4" PTH | 4 |
| 12 | 800315 | | NUT, WING 5/16-18 | 1 |
| 13 | 800546 | | SCREW, M12-1.25 X 35MM..... | 4 |
| 14 | 800875 | | NUT, M12-1.25 | 4 |
| 15 | 806954 | | BOLT, BATTERY HOLD DOWN | 1 |
| 16 | 807332 | | SHOCK ABSORBER..... | 1 |
| 17 | 818303 | | WASHER, REBOUND BUMPER | 1 |
| 18 | 816667 | | BLOCK, STABILIZER | 2 |
| 19 | 823621 | | BUSHING | 2 |
| 20 | 825366 | | RETAINER | 2 |
| 21 | 825500 | | WASHER, CUPPED..... | 4 |
| 22 | 828247 | | GROMMET..... | 2 |
| 23 | 805437 | | SPRING..... | 2 |
| 24 | 840528 | | MAT, FLOOR | 1 |
| 25 | 840684 | | DECK, CARGO AREA | 1 |
| 26 | 840695 | | PLATE, BATTERY HOLD DOWN..... | 1 |
| 27 | 840770 | | GUARD, PEDAL..... | 1 |
| 28 | 892709 | | BODY, W/DECALS..... | 1 |
| 29 | 897151 | | FRAME, POWER | 1 |
| 30 | 876660 | | RETAINER | 2 |

BODY & REAR SUSPENSION

| ITEM | PART NO. | 1 2 3 4 5 | DESCRIPTION | QTY. |
|------|-----------|-----------|--|------|
| 31 | 893187 | | BODY, GALVANIZED W/DECALS..... | 1 |
| 32 | 308332 | | NUT, 1/2-13 | 2 |
| 33 | 71037-G02 | | E-Z-GO NAMEPLATE | 1 |
| 34 | 831443 | | PLATE, CUSHMAN | 1 |
| 35 | 825387 | | LABEL, WARNING, VEHICLE OPERATION | 1 |
| 36 | 821071 | | LABEL, NOTICE, OFF-HIGHWAY | 1 |
| 37 | 840871 | | LABEL, WARNING, CHARGER OPERATION | 1 |
| 38 | 819936 | | LABEL, WARNING, BATTERY VENTILATION..... | 1 |
| 39 | 840691 | | LABEL, BATTERY WIRING..... | 1 |
| 40 | 825328 | | LABEL, WARNING, USE HAND HOLDS | 2 |
| 41 | 840696 | | LABEL, WARNING, NO STANDING..... | 1 |
| 42 | 12064-G3 | | PUSH NUT, 3/16" | 3 |
| 43 | * | | SERIAL NUMBER LABEL..... | 1 |

**DID YOU
KNOW?**

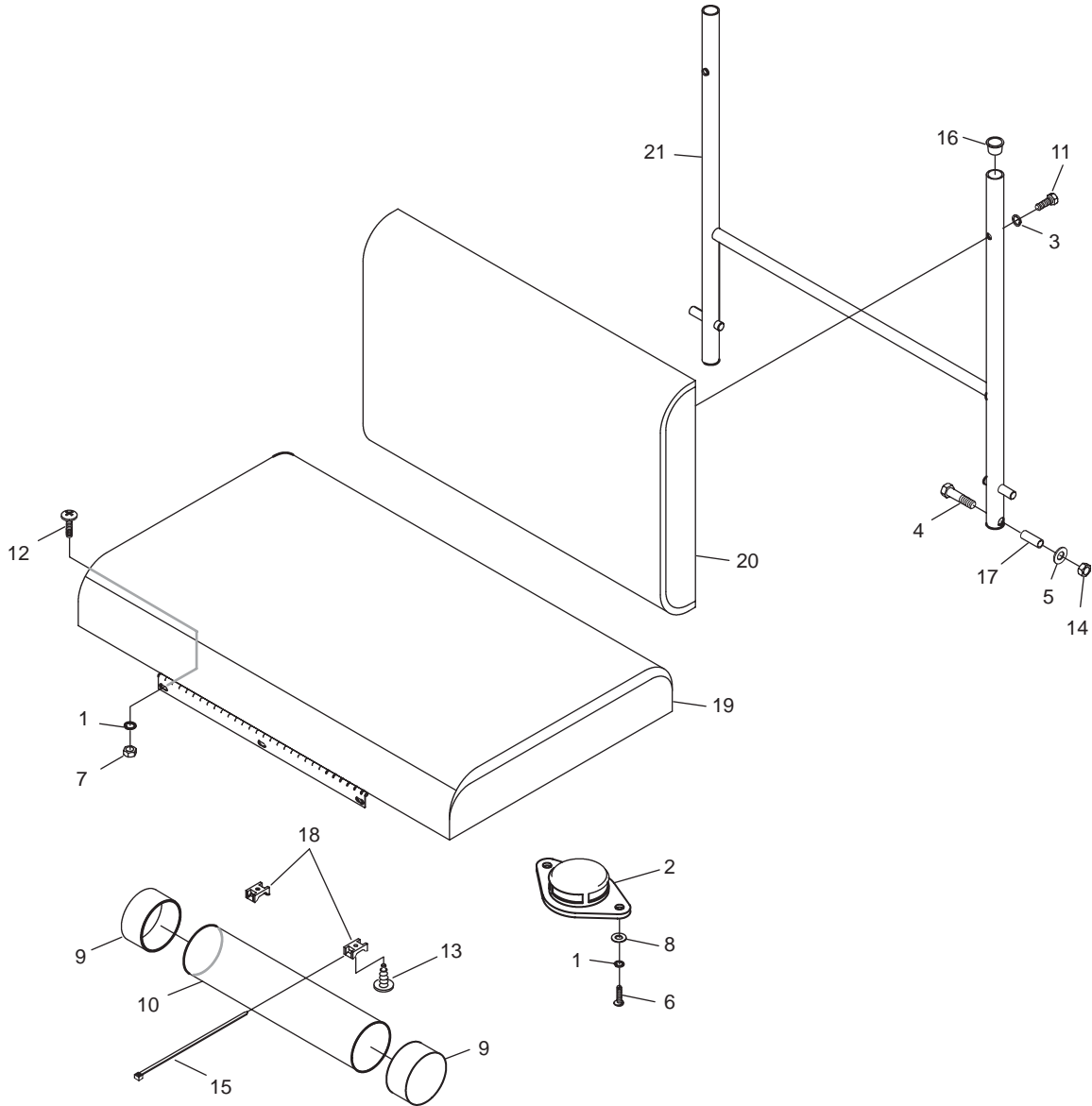
CartPros directs you to the right part using the part numbers from this manual. Enter the part number into our search box and it will find the part you are looking for.

**GET STARTED
HERE** →

<https://CartPros.com/f.html>

BODY & REAR SUSPENSION

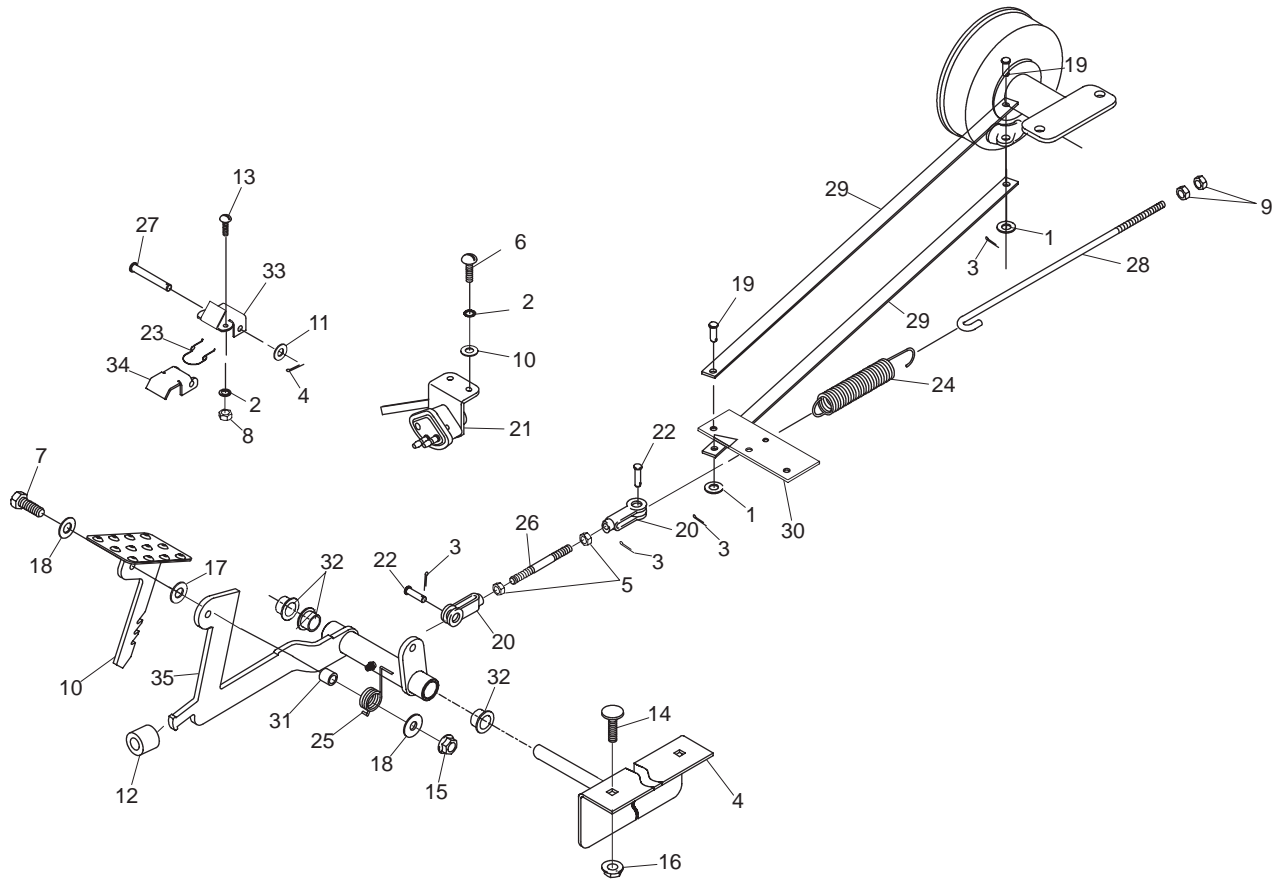
SEATING



SEATING

| ITEM | PART NO. | 1 2 3 4 5 | DESCRIPTION | QTY. |
|------|-----------|-----------|---------------------------------------|------|
| 1 | 120052 | | LOCK WASHER, #10 | 5 |
| 2 | 158135-01 | | SWITCH, SEAT | 1 |
| 3 | 306396 | | LOCK WASHER, 1/4" | 3 |
| 4 | 306423 | | SCREW, 5/16-18 X 1 3/4" L | 2 |
| 5 | 306453 | | WASHER, 5/16" | 2 |
| 6 | 306527 | | SCREW, #10-24 X 3/4" PTH | 2 |
| 7 | 306531 | | NUT, #10-24 | 3 |
| 8 | 308089 | | WASHER, #10..... | 2 |
| 9 | 38061A | | CAP, VINYL | 2 |
| 10 | 38541 | | TUBE, DOCUMENT | 1 |
| 11 | 600014 | | SCREW, 1/4-20 X 1 3/4" L | 4 |
| 12 | 800271 | | SCREW, #10-24 X 1/2" PTH | 3 |
| 13 | 800344 | | SCREW, #10-16 X 9/16" L TAPPING | 2 |
| 14 | 800697 | | NUT, FLANGELOCK 5/16-18 | 2 |
| 15 | 823549 | | TIE, WIRE 15.5" (40MM)..... | 2 |
| 16 | 826747 | | PLUG, HOLE | 2 |
| 17 | 840499 | | BUSHING | 2 |
| 18 | 840508 | | MOUNT, CABLE TIE | 2 |
| 19 | 883938 | | SEAT | 1 |
| 20 | 884683 | | BACKREST | 1 |
| 21 | 892823 | | FRAME, BACKREST | 1 |

BRAKE PEDAL & LINKAGE



BRAKE PEDAL & LINKAGE

| ITEM | PART NO. | 1 2 3 4 5 | DESCRIPTION | QTY. |
|------|-----------|-----------|---------------------------------------|------|
| 1 | 103867 | | WASHER, 11/32" | 4 |
| 2 | 120052 | | LOCK WASHER, #10 | 4 |
| 3 | 306328 | | PIN, COTTER 3/32 X 3/4" L | 7 |
| 4 | 2703903.7 | | PIVOT, BRAKE | 1 |
| 5 | 306320 | | NUT, 5/16-24 | 2 |
| 6 | 306391 | | SCREW, #10-32 X 5/16" L | 2 |
| 7 | 306435 | | SCREW, 5/16-18 X 1 1/4" L | 1 |
| 8 | 306531 | | NUT, #10-24 | 2 |
| 9 | 306932 | | NUT, 5/16-18 | 2 |
| 10 | 892802 | | LATCH, BRAKE | 1 |
| 11 | 308090 | | WASHER, 1/4" | 1 |
| 12 | 517163 | | SPACER | 1 |
| 13 | 800271 | | SCREW, #10-24 X 1/2" L | 2 |
| 14 | 800557 | | BOLT, CARRIAGE 5/16-18 X 3/4" L | 2 |
| 15 | 800290 | | NUT, LOCK 5/16-18 | 1 |
| 16 | 800697 | | NUT, FLANGELOCK 5/16-18 | 2 |
| 17 | 800873 | | WASHER, NYLON 3/8" | 1 |
| 18 | 800874 | | WASHER, 11/32" | 2 |
| 19 | 806714 | | PIN, CLEVIS 5/16 X 15/16" L | 4 |
| 20 | 810722 | | YOKE | 2 |
| 21 | 814005 | | SWITCH | 1 |
| 22 | 806703 | | PIN, CLEVIS | 2 |
| 23 | 817507 | | SPRING | 1 |
| 24 | 822313 | | SPRING, EXTENSION | 1 |
| 25 | 829860 | | SPRING | 1 |
| 26 | 830661 | | ROD, THREADED | 1 |
| 27 | 830784 | | PIN, PIVOT | 1 |
| 28 | 831861 | | BOLT, ADJUSTING | 1 |
| 29 | 840326 | | STRAP, BRAKE | 4 |
| 30 | 840335 | | CROSSMEMBER, BRAKE | 1 |

DID YOU KNOW?

CartPros directs you to the right part using the part numbers from this manual. Enter the part number into our search box and it will find the part you are looking for.

GET STARTED HERE →

<https://CartPros.com/f.html>

BRAKE PEDAL & LINKAGE

| ITEM | PART NO. | 1 2 3 4 5 | DESCRIPTION | QTY. |
|------|-----------|-----------|-------------------------|------|
| 31 | 840491 | | BUSHING | 1 |
| 32 | 840494 | | BEARING, FLANGED..... | 3 |
| 33 | 840666 | | LATCH, BRAKE LOCK..... | 1 |
| 34 | 840667 | | LATCH, PARK BRAKE | 1 |
| 35 | 2703900.7 | | ARM, BRAKE | 1 |

**DID YOU
KNOW?**

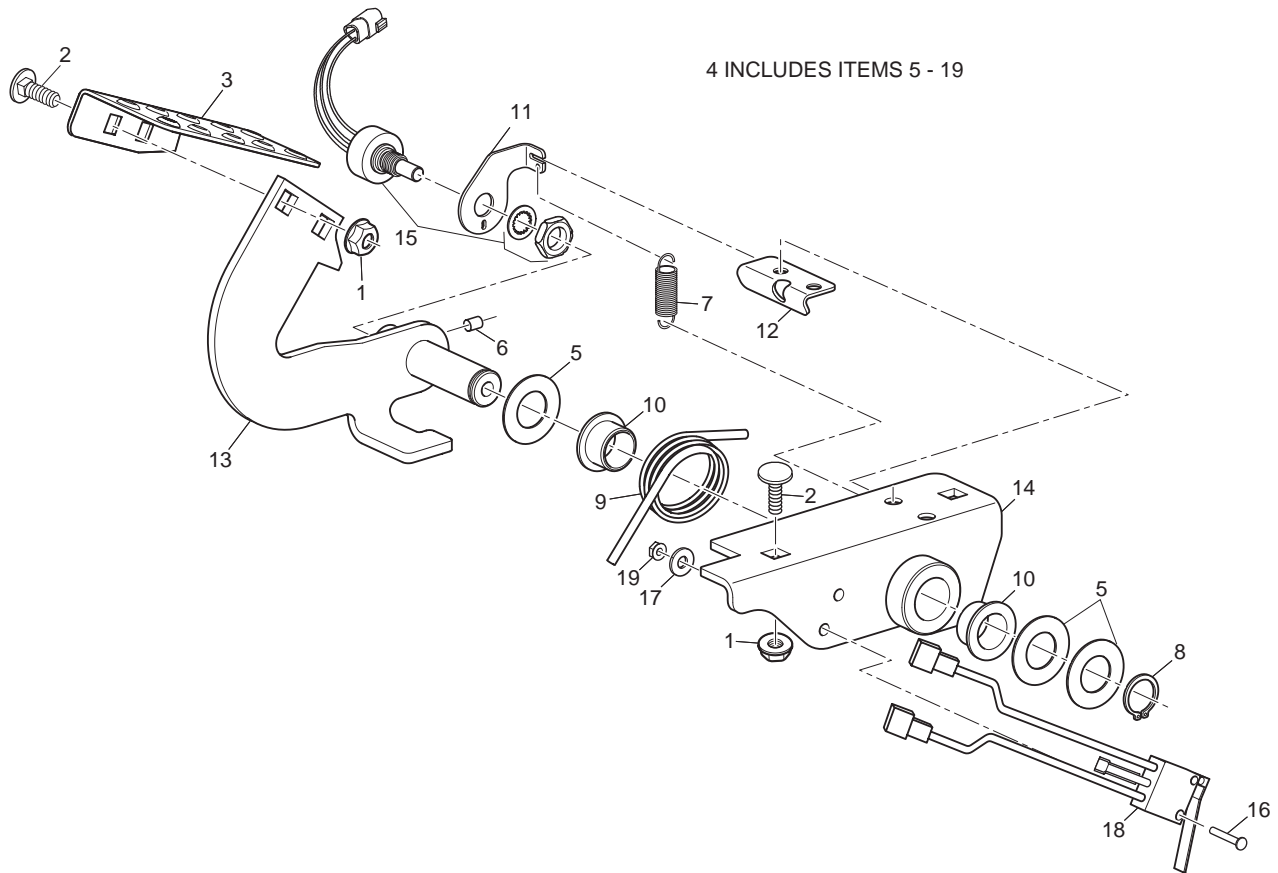
CartPros directs you to the right part using the part numbers from this manual. Enter the part number into our search box and it will find the part you are looking for.

**GET STARTED
HERE** →

<https://CartPros.com/f.html>

BRAKE PEDAL & LINKAGE

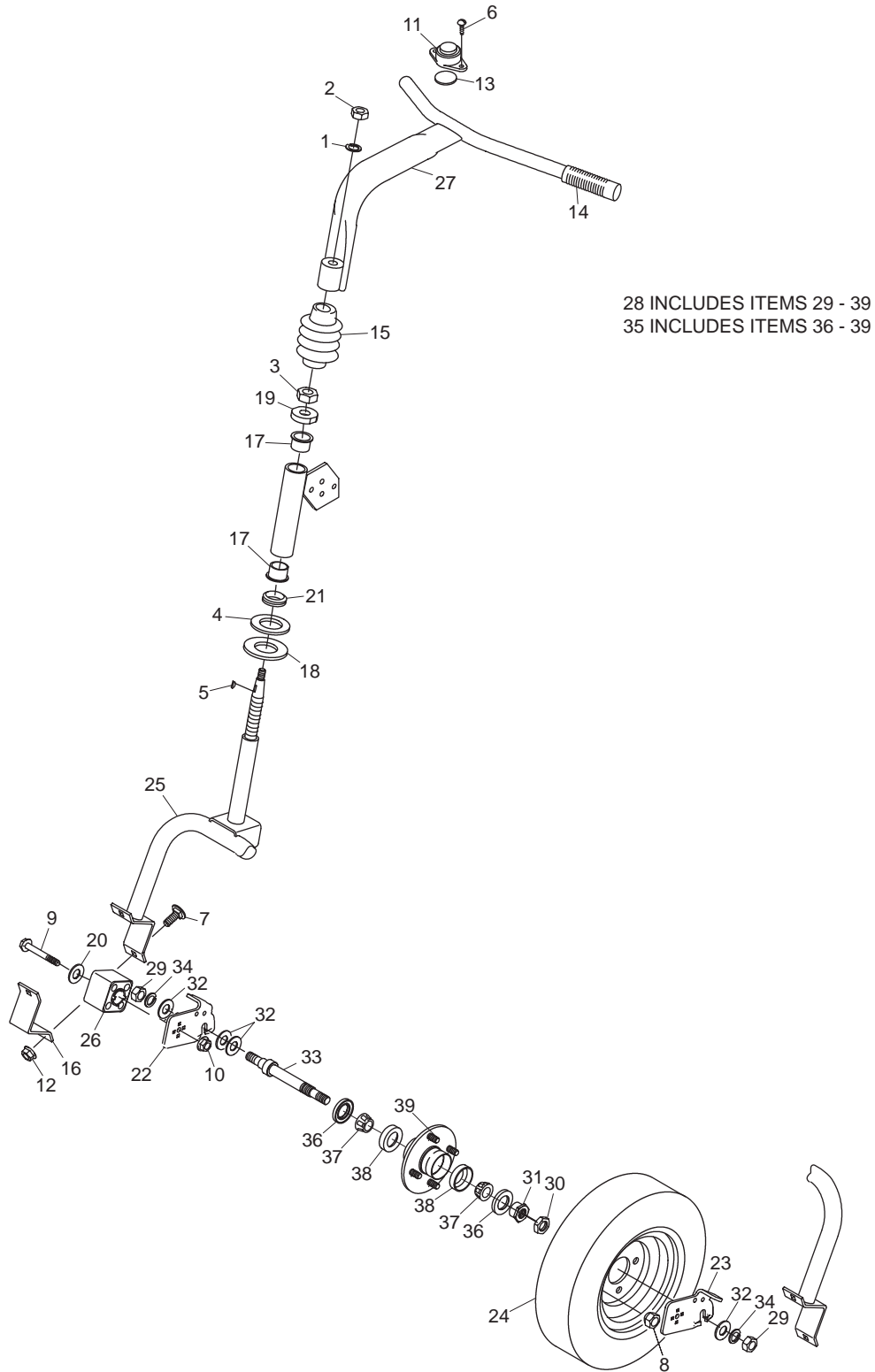
SPEED CONTROL PEDAL



SPEED CONTROL PEDAL

| ITEM | PART NO. | 1 2 3 4 5 | DESCRIPTION | QTY. |
|------|----------|-----------|---|------|
| 1 | 548911 | | NUT, FLANGELOCK, 5/16-18 | 4 |
| 2 | 800557 | | BOLT, CARRIAGE, 5/16-18 X 3/4" L | 4 |
| 3 | 840419 | | PEDAL, SPEED CONTROL | 1 |
| 4 | 894440 | | SPEED CONTROL ASSEMBLY (INCLUDES ITEMS 5-19)..... | 1 |
| 5 | 548478 | | WASHER, FLAT | 3 |
| 6 | 800225 | | SCREW, SET, #10-24 X 1/4" L | 1 |
| 7 | 805421 | | SPRING, INDEX..... | 1 |
| 8 | 833104 | | RING, RETAINING | 1 |
| 9 | 840435 | | SPRING, TORSION | 1 |
| 10 | 840494 | | BEARING, FLANGED | 2 |
| 11 | 869184 | | BRACKET, POTENTIOMETER MOUNT | 1 |
| 12 | 840688 | | TAB | 1 |
| 13 | 396103 | | ARM, SPEED CONTROL | 1 |
| 14 | 897183 | | BRACKET, SPEED CONTROL MOUNT | 1 |
| 15 | 4119768 | | POTENTIOMETER, 30° | 1 |
| 16 | 800439 | | SCREW, #4-40 X 3/4" L | 2 |
| 17 | 308089 | | WASHER, FLAT | 2 |
| 18 | 894439 | | SWITCH, NC..... | 1 |
| 19 | 800587 | | NUT, #4-40..... | 2 |

FORK, HUB & HANDLEBARS



FORK, HUB & HANDLEBARS

| ITEM | PART NO. | 1 2 3 4 5 | DESCRIPTION | QTY. |
|------|----------|-----------|--|------|
| 1 | 120166 | | LOCK WASHER, 1/2" | 1 |
| 2 | 301988 | | NUT, 1/2-20 | 1 |
| 3 | 305134 | | NUT, JAM 7/8-14 | 2 |
| 4 | 520231 | | WASHER, THRUST 1 1/4" | 1 |
| 5 | 551041 | | KEY, WOODRUFF #6..... | 1 |
| 6 | 800144 | | SCREW, #10-16 X 5/8" PTH | 2 |
| 7 | 800500 | | BOLT, CARRIAGE 3/8-16 X 1" L | 4 |
| 8 | 800573 | | NUT, LUG 1/2-20..... | 4 |
| 9 | 800610 | | SCREW, FLANGE 7/16-20 X 1 1/8" L | 2 |
| 10 | 800612 | | NUT, LOCK 7/16-20 | 2 |
| 11 | 806791 | | HORN BUTTON | 1 |
| 12 | 800698 | | NUT, FLANGELOCK 3/8-16 | 4 |
| 13 | 807290 | | INSULATOR, HORN..... | 1 |
| 14 | 807472 | | GRIP, HANDLE | 2 |
| 15 | 831909 | | BOOT | 1 |
| 16 | 840318 | | CLAMP, HALF | 2 |
| 17 | 840324 | | BEARING, FLANGED..... | 2 |
| 18 | 840372 | | WASHER, RUBBER..... | 1 |
| 19 | 840411 | | NUT, SPINDLE | 1 |
| 20 | 840412 | | WASHER, 7/16" | 2 |
| 21 | 840458 | | RING, V | 1 |
| 22 | 840479 | | BRACKET, FORK RH..... | 1 |
| 23 | 840689 | | BRACKET, FORK LH | 1 |
| 24 | 892668 | | WHEEL ASSEMBLY..... | 1 |
| | | | TIRE, 4.80 X 8 LOAD RANGE B | 1 |
| | 835498 | | RIM, WHEEL..... | 1 |
| | 886735 | | VALVE STEM..... | 1 |
| 25 | 892701 | | FORK | 1 |
| 26 | 892744 | | MOUNT, SUSPENSION | 2 |
| 27 | 892764 | | HANDLE BAR | 1 |

FORK, HUB & HANDLEBARS

| ITEM | PART NO. | 1 | 2 | 3 | 4 | 5 | DESCRIPTION | QTY. |
|------|----------|---|---|---|---|---|--|------|
| 28 | 892781 | | | | | | AXLE & HUB ASSEMBLY (INCLUDES ITEMS 29-39) | 1 |
| 29 | 130084 | | | | | | NUT, 5/8-18..... | 2 |
| 30 | 310854 | | | | | | NUT, JAM 1-14..... | 1 |
| 31 | 815814 | | | | | | NUT, BEARING ADJUSTING | 1 |
| 32 | 809156 | | | | | | WASHER, THRUST 9/16" | 4 |
| 33 | 840325 | | | | | | AXLE..... | 1 |
| 34 | 306494 | | | | | | LOCK WASHER, 5/8" | 2 |
| 35 | 892751 | | | | | | HUB ASSEMBLY (INCLUDES ITEMS 36-39) | 1 |
| 36 | 700290 | | | | | | SEAL, GREASE | 2 |
| 37 | 814473 | | | | | | BEARING | 2 |
| 38 | 814474 | | | | | | RACE, BEARING | 2 |
| 39 | 843616 | | | | | | BOLT, WHEEL | 4 |

**DID YOU
KNOW?**

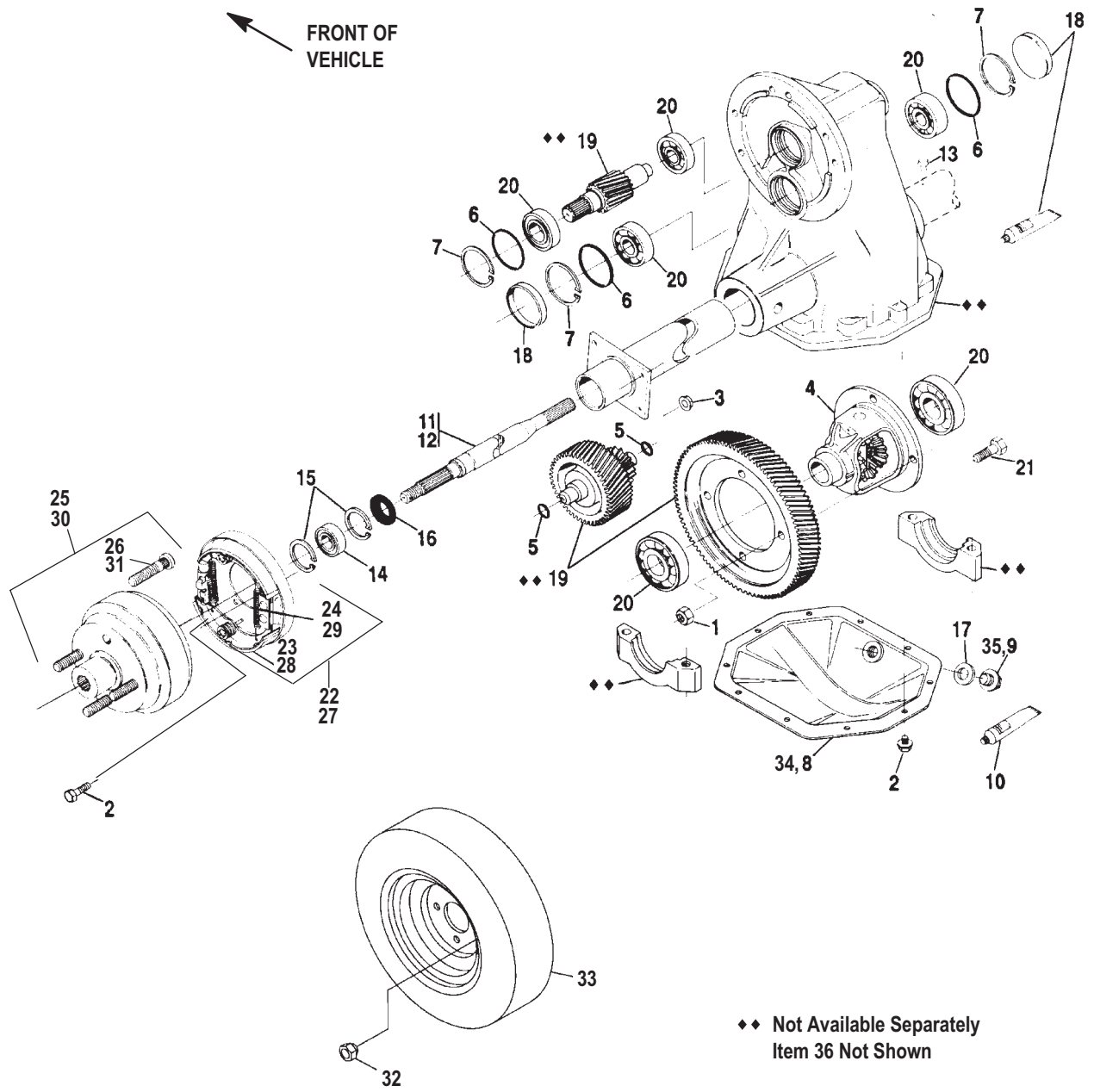
CartPros directs you to the right part using the part numbers from this manual. Enter the part number into our search box and it will find the part you are looking for.

**GET STARTED
HERE** →

<https://CartPros.com/f.html>

FORK, HUB & HANDLEBARS

DIFFERENTIAL



DIFFERENTIAL

| ITEM | PART NO. | 1 2 3 4 5 | DESCRIPTION | QTY. |
|------|----------------|-----------|--|------|
| | 4115147 | | DIFFERENTIAL, COMPLETE (INCLUDES ITEMS 1-31) | |
| 1 | 306319 | | NUT, 3/8-24..... | 4 |
| 2 | 306450 | | SCREW, 5/16-18 X 3/4" L..... | 18 |
| 3 | 548911 | | NUT, FLANGELOCK 5/16-18..... | 8 |
| 4 | 840807 | | CASE ASSEMBLY..... | 1 |
| 5 | 840808 | | SEAL, O-RING..... | 2 |
| 6 | 840809 | | SEAL, O-RING..... | 3 |
| 7 | 840810 | | RING, RETAINING..... | 3 |
| 8 | 4115172 | | COVER, CARRIER..... | 1 |
| 9 | 845316 | | PLUG, FILL (HEX HEAD)..... | 1 |
| 10 | | | SEAL, COVER PLATE..... | 1 |
| 11 | 840814 | | SHAFT, AXLE LH..... | 1 |
| 12 | 840815 | | SHAFT, AXLE RH..... | 1 |
| 13 | 840816 | | VENT..... | 1 |
| 14 | 840817 | | BEARING..... | 2 |
| 15 | 840818 | | RING, RETAINING..... | 4 |
| 16 | 840819 | | SEAL, OIL..... | 2 |
| 17 | 840820 | | WASHER, FLAT PLASTIC..... | 1 |
| 18 | 840821 | | KIT, INTERMEDIATE SEAL..... | 1 |
| 19 | 840822 | | GEAR SET..... | 1 |
| 20 | 840823 | | KIT, CARRIER BEARING..... | 1 |
| 21 | 840824 | | SCREW, 3/8-24 X 1 1/8" L..... | 4 |
| 22 | 4115155 | | BRAKE, (LEFT), COMPLETE (INCLUDES ITEMS 23-24)..... | 1 |
| 23 | 4115170 | | KIT, BRAKE SHOES (1 WHEEL)..... | 2 |
| 24 | 892968 | | KIT, BRAKE HARDWARE (1 WHEEL)..... | 2 |
| 25 | 892969 | | HUB, W/ STUDS (INCLUDES ITEM 26)..... | 2 |
| 26 | 840844 | | STUD, WHEEL MOUNTING..... | 4 |
| 27 | 4115156 | | BRAKE, (RIGHT), COMPLETE (INCLUDES ITEMS 28-29)..... | 1 |
| 28 | 892866 | | KIT, BRAKE SHOES (1 WHEEL)..... | 2 |

DIFFERENTIAL

| ITEM | PART NO. | 1 2 3 4 5 | DESCRIPTION | QTY. |
|------|----------|-----------|---|------|
| 29 | 892968 | | KIT, BRAKE HARDWARE (1 WHEEL) | 2 |
| 30 | 892969 | | HUB, W/ STUDS (INCLUDES ITEM 31)..... | 2 |
| 31 | 840844 | | STUD, WHEEL MOUNTING | 4 |
| 32 | 800573 | | NUT, LUG 1/2-20..... | 8 |
| 33 | 892668 | | WHEEL ASSEMBLY..... | 2 |
| | | | TIRE, 4.80 X 8 LOAD RANGE B | 1 |
| | 835498 | | RIM, WHEEL..... | 1 |
| | 886735 | | VALVE STEM..... | 1 |
| 34 | 845315 | | COVER, CARRIER (USE W/SOCKET HEAD PLUG) | 1 |
| 35 | 845316 | | PLUG, FILL (SOCKET HEAD) | 1 |
| 36 | 2700812 | | BOOT, BRAKE LEVER..... | 1 |

**DID YOU
KNOW?**

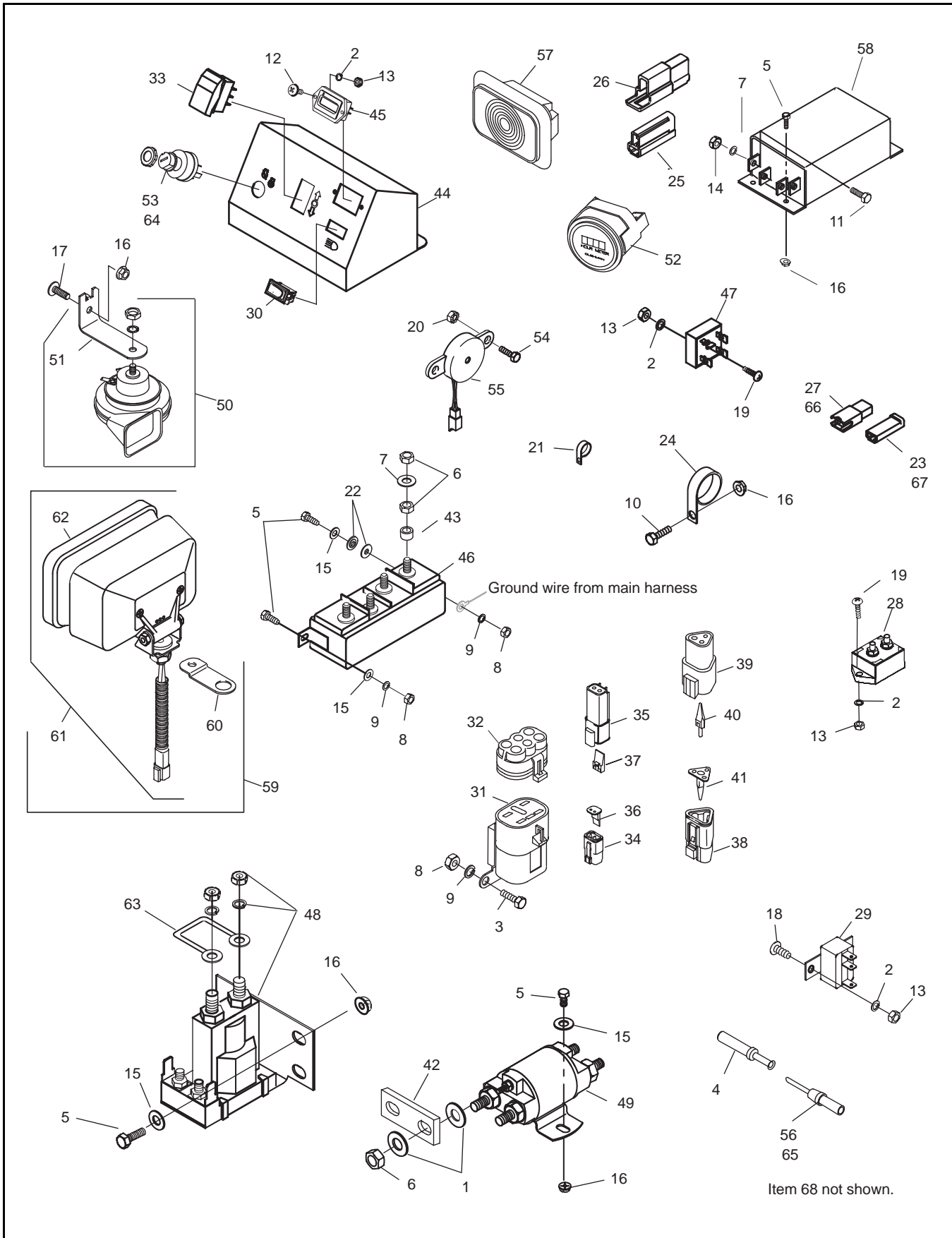
CartPros directs you to the right part using the part numbers from this manual. Enter the part number into our search box and it will find the part you are looking for.

**GET STARTED
HERE** →

<https://CartPros.com/f.html>

DIFFERENTIAL

ELECTRICAL COMPONENTS



ELECTRICAL COMPONENTS

| ITEM | PART NO. | 1 2 3 4 5 | DESCRIPTION | QTY. |
|------|----------|-----------|--------------------------------------|------|
| 1 | 103867 | | WASHER, 5/16" | 8 |
| 2 | 120052 | | WASHER, #10..... | 7 |
| 3 | 300646 | | SCREW, 1/4-20 X 3/4" L | 2 |
| 4 | 838769 | | TERMINAL, SOCKET | AR |
| 5 | 302288 | | SCREW, 1/4-20 X 1" L | 14 |
| 6 | 306320 | | NUT, 5/16-24 | 12 |
| 7 | 306325 | | LOCK WASHER, 5/16"..... | 8 |
| 8 | 306375 | | NUT, 1/4-20 | 8 |
| 9 | 306396 | | LOCK WASHER, 1/4"..... | 7 |
| 10 | 306419 | | SCREW, 1/4-20 X 1/2" L | 1 |
| 11 | 306450 | | SCREW, 5/16-18 X 3/4" L | 4 |
| 12 | 306514 | | SCREW, #10-24 X 1/2" L SLOTTED..... | 2 |
| 13 | 306531 | | NUT, #10-24 | 7 |
| 14 | 306932 | | NUT, 5/16-18 | 4 |
| 15 | 308090 | | WASHER, 1/4" | 8 |
| 16 | 548910 | | NUT, 1/4-20 FLANGELOCK..... | 12 |
| 17 | 800017 | | SCREW, 1/4-20 X 1" PTH..... | 1 |
| 18 | 800271 | | SCREW, #10-24 X 1/2" PTH | 2 |
| 19 | 800299 | | SCREW, #10-24 X 1" PTH | 3 |
| 20 | 800587 | | NUT, #4-40 W/LOCK WASHER | 2 |
| 21 | 814924 | | CLAMP | 3 |
| 22 | 817719 | | BUSHING, FIBER..... | 2 |
| 23 | 825880 | | CONNECTOR, 1 CONTACT PLUG | AR |
| 24 | 825884 | | CLAMP | 1 |
| 25 | 826005 | | CONNECTOR, 2 CONTACT PLUG | AR |
| 26 | 826006 | | CONNECTOR, 2 CONTACT RECEPTACLE..... | AR |
| 27 | 826726 | | CONNECTOR, 1 CONTACT RECEPTACLE..... | AR |
| 28 | 829164 | | CIRCUIT BREAKER, 90 AMP..... | 1 |
| 29 | 829780 | | CIRCUIT BREAKER, 20 AMP..... | 1 |
| 30 | 830640 | | SWITCH, ROCKER..... | 1 |

ELECTRICAL COMPONENTS

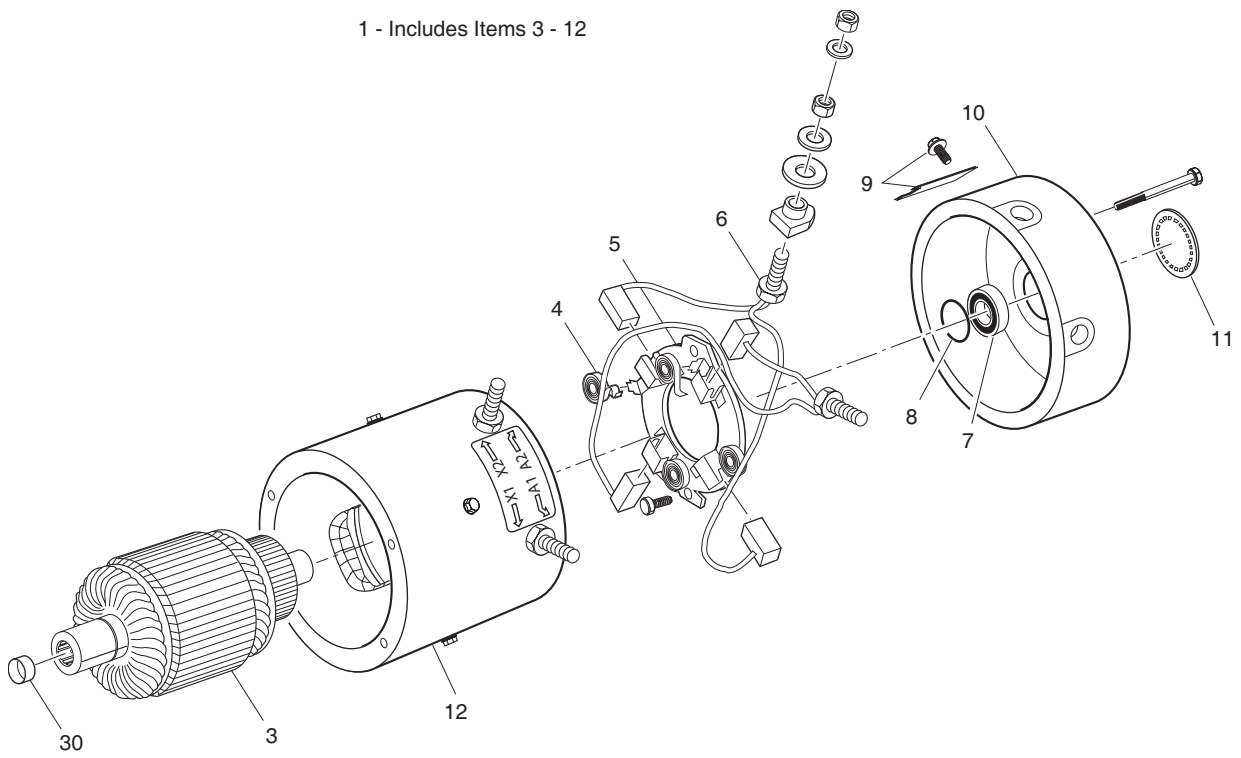
| ITEM | PART NO. | 1 | 2 | 3 | 4 | 5 | DESCRIPTION | QTY. |
|------|----------|---|---|---|---|---|--|------|
| 31 | | | | | | | | |
| 32 | | | | | | | | |
| 33 | 836354 | | | | | | SWITCH | 1 |
| 34 | 839917 | | | | | | PLUG, 2-WIRE | AR |
| 35 | 839918 | | | | | | RECEPTACLE, 2-WIRE | AR |
| 36 | 839921 | | | | | | LOCK, 2-WIRE PLUG | AR |
| 37 | 839935 | | | | | | LOCK, 2-WIRE RECEPTACLE | AR |
| 38 | 839849 | | | | | | PLUG, 3-WIRE | AR |
| 39 | 839850 | | | | | | RECEPTACLE, 3-WIRE | AR |
| 40 | 840117 | | | | | | LOCK, 3-WIRE RECEPTACLE | AR |
| 41 | 840118 | | | | | | LOCK, 3-WIRE PLUG | AR |
| 42 | 840273 | | | | | | BAR, SOLENOID BUS | 2 |
| 43 | 840491 | | | | | | BUSHING | 4 |
| 44 | 840496 | | | | | | PANEL, CONTROL | 1 |
| 45 | 840526 | | | | | | GAUGE, BATTERY CONDITION | 1 |
| 46 | | | | | | | | |
| 47 | 840679 | | | | | | RECTIFIER BRIDGE | 1 |
| 48 | 841208 | | | | | | SOLENOID, 24 VOLT, MAIN CONTACT | 1 |
| 49 | 841248 | | | | | | SOLENOID, 24 VOLT | 2 |
| 50 | 886425 | | | | | | HORN (INCLUDES ITEM 51) | 1 |
| 51 | 829694 | | | | | | BRACKET, HORN | 1 |
| 52 | 880631 | | | | | | HOUR METER SET (ACCESSORY) | 1 |
| 53 | 886311 | | | | | | SWITCH, IGNITION | 1 |
| 54 | 888503 | | | | | | SERVICE SET CONTAINS TWO #4-40 X 3/4" L SCREWS | 1 |
| 55 | 890000 | | | | | | BUZZER | 1 |
| 56 | 524358 | | | | | | TERMINAL, MALE PIN (16-18 GAUGE) | AR |
| 57 | 892676 | | | | | | LIGHT, RED (TAIL LIGHT) | 1 |
| 58 | 4110440 | | | | | | CONTROLLER, SPEED | 1 |
| 59 | 892942 | | | | | | HEADLIGHT SET (ACCESSORY) (INCLUDES ITEMS 60-62) | 1 |
| 60 | 840854 | | | | | | BRACKET, HEADLIGHT | 1 |

ELECTRICAL COMPONENTS

| ITEM | PART NO. | 1 2 3 4 5 | DESCRIPTION | QTY. |
|------|----------|-----------|--|------|
| 61 | 892523 | | HEADLIGHT (INCLUDES ITEM 62) | 1 |
| 62 | 840860 | | BULB, HEADLIGHT | 1 |
| 63 | 893142 | | RESISTOR, 250 OHM | 1 |
| 64 | 886311 | | SWITCH, IGNITION, KEYED ALIKE | 1 |
| 65 | 840676 | | TERMINAL, MALE PIN (14-16 GAUGE) | AR |
| 66 | 825886 | | TERMINAL, 1/4 FEMALE, 14-16AWG | AR |
| 67 | 825748 | | TERMINAL, 1/4 FEMALE, 14-16AWG | AR |
| 68 | 7035 | | GREASE, ELECTRICAL CONNECTOR | 1 |

MOTOR

1 - Includes Items 3 - 12

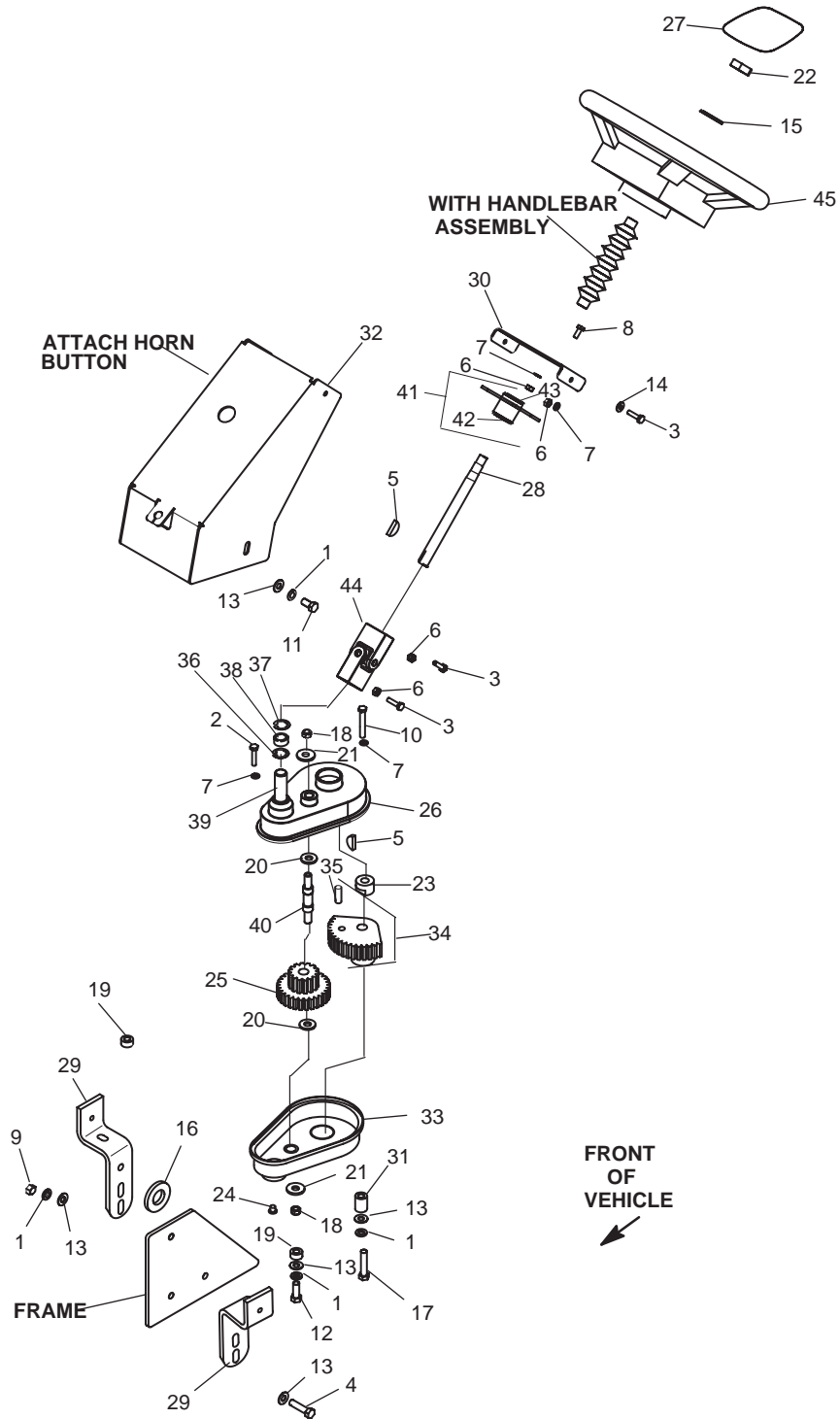


MOTOR

WHERE APPLICABLE, THE USE OF NON UL PARTS WILL VOID ANY UL LISTING.
 WHEN ORDERING PARTS, PLEASE SPECIFY THE MODEL AND SERIAL NUMBER OF THE PRODUCT.
 * INDICATES A COMPONENT THAT IS NOT AVAILABLE AS AN INDIVIDUAL PART.
 G** INDICATES CONSULT CUSTOMER SERVICE DEPARTMENT FOR ADDITIONAL INFORMATION.

| ITEM | PART NO. | 1 2 3 4 5 | DESCRIPTION | QTY. |
|------|-----------|-----------|--|------|
| 1 | 73124-G02 | | MOTOR, SERIES (INCLUDES ITEMS 3-12) | 1 |
| 2 | | | | |
| 3 | 73124-G01 | | ARMATURE | 1 |
| 4 | 73124-G03 | | BRUSH SPRING..... | 4 |
| 5 | 73124-G15 | | BRUSH PLATE AND BOX | 1 |
| 6 | 73124-G25 | | BRUSH REPLACEMENT KIT (INCLUDES HARDWARE) | 1 |
| 7 | 73124-G07 | | BEARING | 1 |
| 8 | 73124-G06 | | SNAP RING | 1 |
| 9 | 73124-G09 | | COVER PLATE AND SCREW | 1 |
| 10 | 73124-G08 | | COMMUTATOR END HOUSING | 1 |
| 11 | 73124-G16 | | CAP..... | 1 |
| 12 | 73124-G29 | | FRAME AND FIELD COIL (G02 MOTOR) (INCLUDES HARDWARE) | 1 |
| 13 | 24261-G1 | | SPLINE BUMPER | 1 |

STEERING WHEEL ACCESSORY



STEERING WHEEL ACCESSORY

| ITEM | PART NO. | 1 2 3 4 5 | DESCRIPTION | QTY. |
|------|----------|-----------|---|------|
| | 893079 | | ACCESSORY STEERING WHEEL (INCLUDES ITEMS 1-45)..... | 1 |
| 1 | 120177 | | LOCK WASHER, 3/8" | 8 |
| 2 | 302030 | | SCREW, 1/4-20 X 1 1/4" L..... | 3 |
| 3 | 302288 | | SCREW, 1/4-20 X 1" L..... | 4 |
| 4 | 302600 | | SCREW, 3/8-16 X 1 1/2" L..... | 3 |
| 5 | 306367 | | KEY WOODRUFF .188 X .750" L..... | 2 |
| 6 | 306375 | | NUT, 1/4-20..... | 8 |
| 7 | 306396 | | LOCK WASHER, 1/4" | 11 |
| 8 | 306487 | | SCREW, 1/4-20 X .62" L..... | 4 |
| 9 | 306562 | | NUT, 3/8-16..... | 3 |
| 10 | 306832 | | SCREW 1/4-20 X 2" L..... | 4 |
| 11 | 306834 | | SCREW 3/8-16 X 3/4" L..... | 2 |
| 12 | 306835 | | SCREW 3/8-16 X 1 1/4" L..... | 2 |
| 13 | 306981 | | WASHER, 3/8" | 11 |
| 14 | 308090 | | WASHER, 1/4" | 2 |
| 15 | 311496 | | WASHER, 5/8" | 1 |
| 16 | 517663 | | WASHER | 1 |
| 17 | 551094 | | SCREW, 3/6-16 X 1 3/4" L..... | 1 |
| 18 | 800612 | | NUT, 7/16 CROWN LOCK | 2 |
| 19 | 808935 | | SPACER | 2 |
| 20 | 816446 | | WASHER | 2 |
| 21 | 816449 | | WASHER, LOCATING | 2 |
| 22 | 816652 | | NUT, STEERING WHEEL..... | 1 |
| 23 | 825672 | | NUT..... | 1 |
| 24 | 825919 | | PLUG, HOLE..... | 1 |
| 25 | 830168 | | GEAR, CLUSTER | 1 |
| 26 | 832555 | | HOUSING, UPPER | 1 |
| 27 | 892228 | | COVER, STEERING WHEEL CENTER | 1 |
| 28 | 840981 | | SHAFT, STEERING WHEEL | 1 |
| 29 | 840982 | | SUPPORT, STEERING..... | 2 |

STEERING WHEEL ACCESSORY

| ITEM | PART NO. | 1 | 2 | 3 | 4 | 5 | DESCRIPTION | QTY. |
|------|----------|---|---|---|---|---|---|------|
| 30 | 844264 | | | | | | PLATE, WHEEL MOUNT | 1 |
| 31 | 844290 | | | | | | BUSHING..... | 1 |
| 32 | 844292 | | | | | | COVER, STEERING..... | 1 |
| 33 | 886883 | | | | | | HOUSING, LOWER | 1 |
| 34 | 886913 | | | | | | GEAR ASSY, DRIVEN (INCLUDES ITEM 35)..... | 1 |
| 35 | 310546 | | | | | | PIN, ROLL 1/2 X 1 1/2" L | 1 |
| 36 | 816447 | | | | | | RING, INTERNAL RETAINING | 1 |
| 37 | 816455 | | | | | | RING, RETAINING | 1 |
| 38 | 816456 | | | | | | BEARING, BALL | 1 |
| 39 | 837855 | | | | | | SHAFT, PIN ON GEAR..... | 1 |
| 40 | 883317 | | | | | | BOLT, IDLER ADJUSTING | 1 |
| 41 | 891597 | | | | | | BUSHING ASSY, STEERING (INCLUDES ITEMS 42-43) | 1 |
| 42 | 548225 | | | | | | FITTING, LUBE | 1 |
| 43 | 827188 | | | | | | BEARING | 1 |
| 44 | 891680 | | | | | | JOINT ASSY, UNIVERSAL | 1 |
| 45 | 892228 | | | | | | WHEEL, STEERING 14" | 1 |

**DID YOU
KNOW?**

CartPros directs you to the right part using the part numbers from this manual. Enter the part number into our search box and it will find the part you are looking for.

**GET STARTED
HERE**

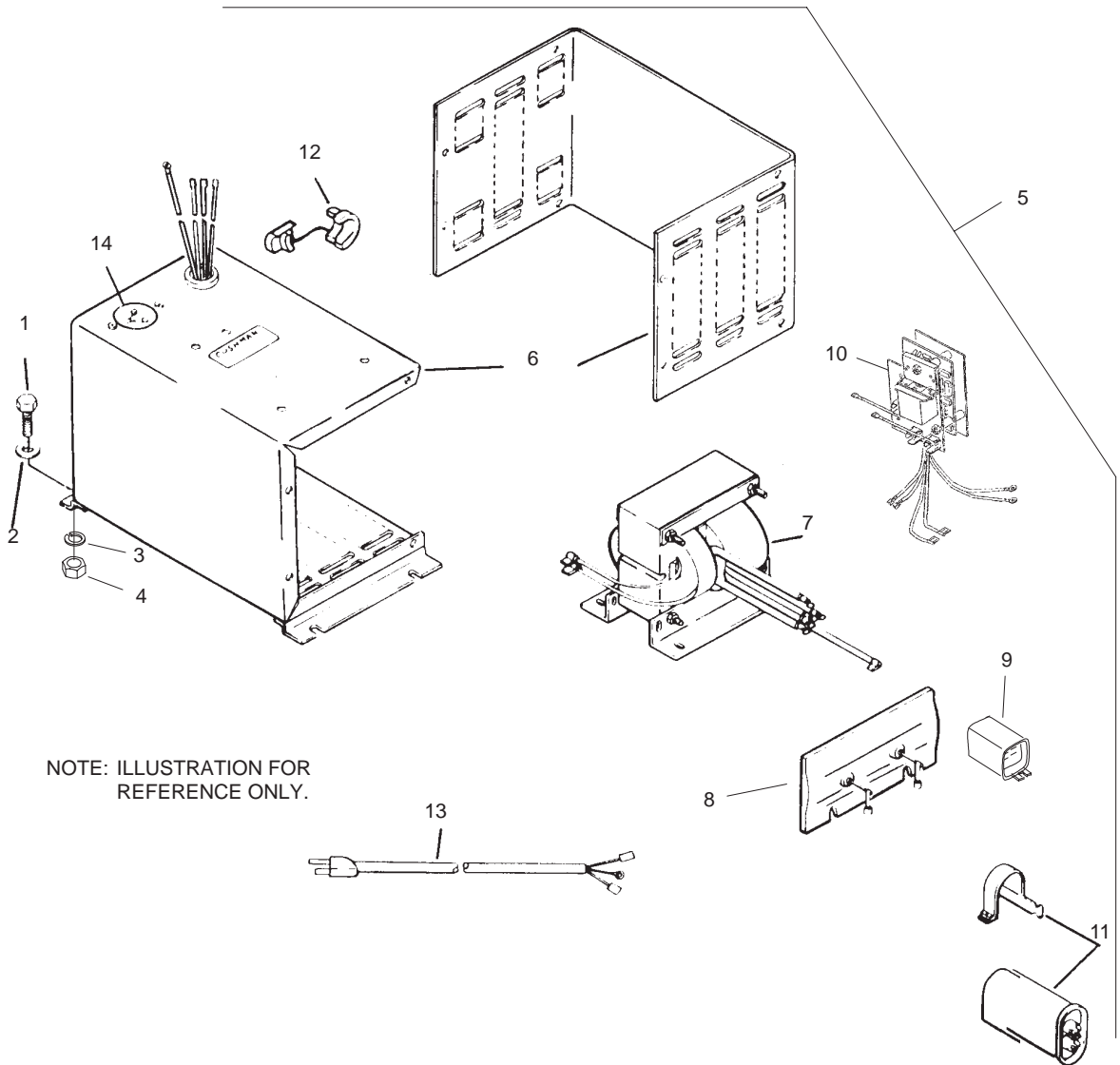


<https://CartPros.com/f.html>

STEERING WHEEL ACCESSORY

BATTERY CHARGER

**25 AMP, 115 VAC, 60 HZ
PART NO. 892860
LESTER MODEL 16940**



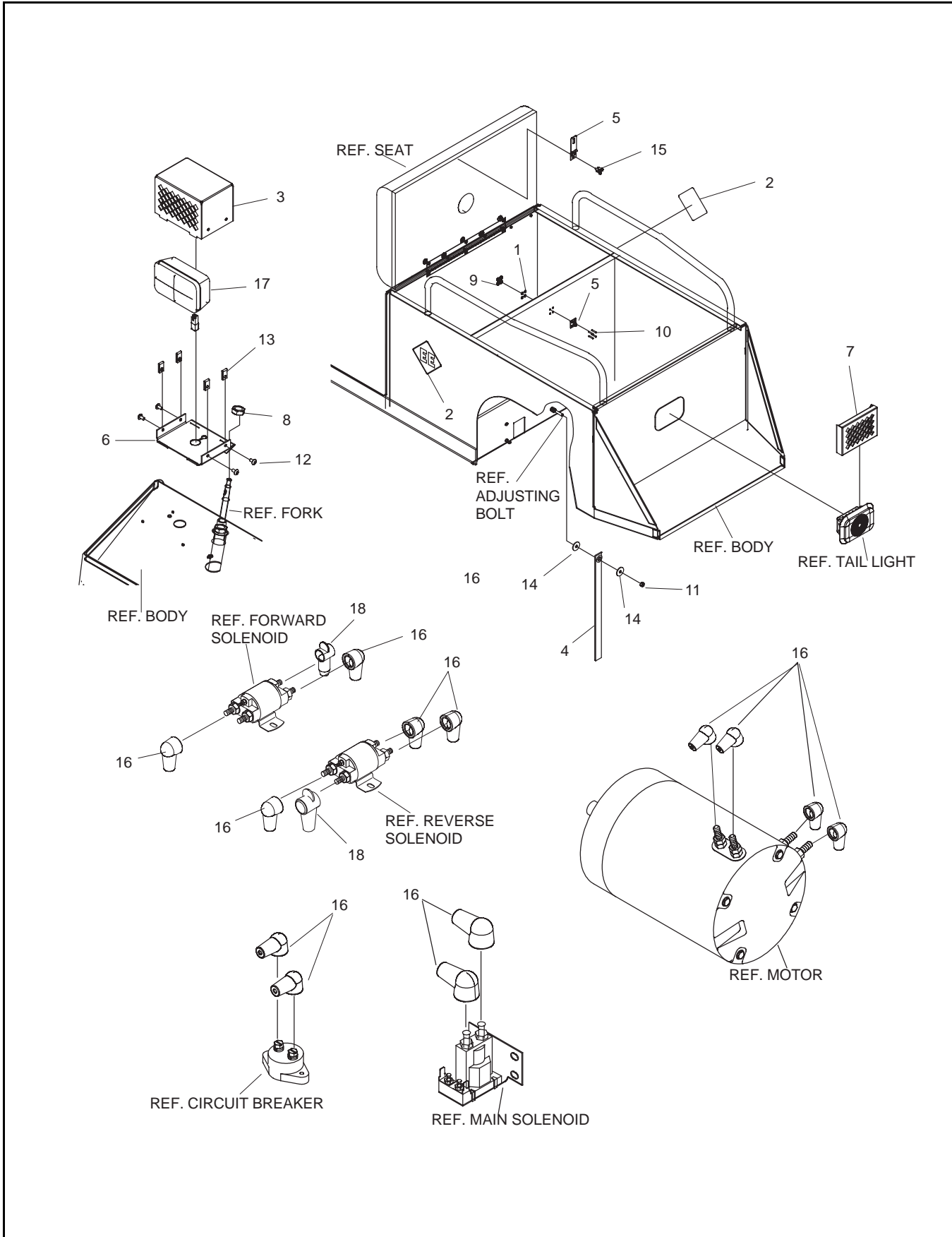
NOTE: ILLUSTRATION FOR REFERENCE ONLY.

BATTERY CHARGER

25 AMP, 115 VAC, 60 HZ
 PART NO. 892860
 LESTER MODEL 16940

| ITEM | PART NO. | 1 2 3 4 5 | DESCRIPTION | QTY. |
|------|----------|-----------|--|------|
| 1 | 800017 | | SCREW, 1/4-20 X 1" L | 4 |
| 2 | 308090 | | WASHER, 1/4" | 4 |
| 3 | 306396 | | LOCK WASHER, 1/4" | 4 |
| 4 | 306375 | | NUT, 1/4-20 | 4 |
| 5 | 892860 | | CHARGER, COMPLETE, MODEL 16940 (INCLUDES ITEMS 6-14) | 1 |
| 6 | 892889 | | CASE, LESTER NO. 21559S | 1 |
| 7 | 892890 | | TRANSFORMER, LESTER NO. 16945S | 1 |
| 8 | 886435 | | HEATSINK, W/DIODES | 1 |
| 9 | 892893 | | RELAY | 1 |
| 10 | 892891 | | TIMER | 1 |
| 11 | 823749 | | CAPACITOR, 6.0 MFD. | 1 |
| 12 | 822048 | | BUSHING, A.C. CORD | 1 |
| 13 | 883216 | | CORDSET, A.C. | 1 |
| | 892892 | | WIRING HARNESS | 1 |
| 14 | 883844 | | FUSE | 1 |

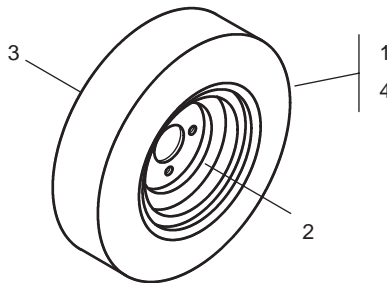
EE COMPONENTS



EE COMPONENTS

| ITEM | PART NO. | 1 2 3 4 5 | DESCRIPTION | QTY. |
|------|-----------|-----------|--------------------------------------|------|
| 1 | 120052 | | LOCK WASHER, #10 | 4 |
| 2 | 2701213 | | DECAL, EE | 2 |
| 3 | 2702875.7 | | COVER, HEADLIGHT GUARD | 1 |
| 4 | 2702915 | | STRAP, STATIC | 1 |
| 5 | 2702994 | | HASP, SAFETY W/STAPLE | 1 |
| 6 | 2703038.7 | | BASE, HEADLIGHT GUARD | 1 |
| 7 | 2703039.7 | | COVER, REAR LIGHT | 1 |
| 8 | 305134 | | NUT, 7/8-14, JAM | 1 |
| 9 | 306531 | | NUT, #10-24 | 4 |
| 10 | 306532 | | SCREW, #10-24 X 5/8" L | 4 |
| 11 | 306932 | | NUT, 5/16-18 | 1 |
| 12 | 800019 | | SCREW, 1/4-29 X 1/2" L | 4 |
| 13 | 800238 | | NUT, 1/4-20, SPEED | 4 |
| 14 | 800874 | | WASHER, 11/32" | 2 |
| 15 | 800965 | | SCREW, 12-14 X 3/4" L, TAPPING | 3 |
| 16 | 844328 | | BOOT, TERMINAL | 13 |
| 17 | 892523 | | HEADLIGHT | 1 |
| 18 | 840177 | | BOOT, TERMINAL | 2 |

WHEELS & TIRES



ACCESSORIES

| ITEM | PART NO. | 1 2 3 4 5 | DESCRIPTION | QTY. |
|------|----------|-----------|---|------|
| | 893092 | | TIRE AND WHEEL, SOLID TIRE, SET OF 3 (INCLUDES ITEMS 1-3) | 1 |
| 1 | 893091 | | TIRE AND WHEEL, SOLID..... | 1 |
| 2 | 841028 | | RIM, SOLID..... | 1 |
| 3 | 841029 | | TIRE, SOLID | 1 |
| 4 | 893472 | | TIRE & WHEEL, FOAM FILLED | 1 |
| | | | CALIBRATOR | |
| | | | CURTIS CALIBRATOR - PART NO. 893052 | |
| | | | CHARGER | |
| | | | CHARGER MODIFICATION 117 - EUROPEAN SHELF MOUNTED PART NO. 887096 | |

**DID YOU
KNOW?**

CartPros directs you to the right part using the part numbers from this manual. Enter the part number into our search box and it will find the part you are looking for.

**GET STARTED
HERE** →

<https://CartPros.com/f.html>



A Textron Company

CUSHMAN[®]

A Textron Company

E-Z-GO Division of TEXTRON Inc.
P.O. Box 388 Augusta, Georgia 30903-0388 USA
Inside USA Phone: 1-800-241-5855, FAX: 1-800-448-8124
Outside USA Phone: 010-1-706-798-4311, FAX: 010-1-706-771-4609

Copyrighted Material
This manual may not be reproduced in whole or
in part without the express permission of
E-Z-GO Division of TEXTRON Inc.
Technical Communications Department