

**DID YOU
KNOW?**

CartPros directs you to the right part using the part numbers from this manual. Enter the part number into our search box and it will find the part you are looking for.

**GET STARTED
HERE** →

<https://CartPros.com/f.html>

CUSHMAN[®]

A Textron Company

S E R V I C E P A R T S M A N U A L



TUG

605248

Electric Three Wheeled Vehicle

ISSUE DATE: JUNE 2006

 **CARTPROS**

**DID YOU
KNOW?**

CartPros directs you to the right part using the part numbers from this manual. Enter the part number into our search box and it will find the part you are looking for.

**GET STARTED
HERE**



<https://CartPros.com/f.html>

**DID YOU
KNOW?**

CartPros directs you to the right part using the part numbers from this manual. Enter the part number into our search box and it will find the part you are looking for.

**GET STARTED
HERE** →

<https://CartPros.com/f.html>

SERVICE PARTS MANUAL

ELECTRIC POWERED UTILITY VEHICLES

TUG

STARTING MODEL YEAR 2006+

E-Z-GO Division of TEXTRON, Inc. reserves the right to make design changes without obligation to make these changes on units previously sold and the information contained in this manual is subject to change without notice.

E-Z-GO Division of TEXTRON, Inc. is not liable for errors in this manual or for incidental or consequential damages that result from the use of the material in this manual.

CUSTOMER SERVICE DEPARTMENT IN USA PHONE: 1-800-241-5855 FAX: 1-800-448-8124

OUTSIDE USA PHONE: 001-706-798-4311, FAX: 001-706-771-4609

E-Z-GO DIVISION OF TEXTRON, INC., P.O.BOX 388, AUGUSTA, GEORGIA USA 30906-3852

**DID YOU
KNOW?**

CartPros directs you to the right part using the part numbers from this manual. Enter the part number into our search box and it will find the part you are looking for.

**GET STARTED
HERE**



<https://CartPros.com/f.html>

NOTES

TABLE OF CONTENTS

SECTION	Page No.
HOW TO USE THE SERVICE PARTS MANUAL	v
ILLUSTRATED PARTS BREAKDOWN	ix
BATTERY CHARGER	A-1
BATTERY RACK & HOLD DOWNS	B-1
BODY	C-1
BRAKE - MASTER CYLINDER	D-1
DIFFERENTIAL	E-1
DRIVE MOTOR	F-1
EC CONVERSION KIT	G-1
ELECTRICAL COMPONENTS	H-1
FORK AND HANDLE BAR	J-1
FRONT & REAR WHEELS AND TIRES	K-1
HYDRAULIC LINES AND RELATED PARTS	M-1
LIFT OUT BATTERY RACK	N-1
PARK BRAKE LEVER	P-1
REAR WHEEL BRAKE	Q-1
REAR WHEEL FRAME & SHOCK ABSORBER	R-1
SEATING	S-1
SPEED CONTROL PEDAL	T-1
STEERING KIT	U-1

**DID YOU
KNOW?**

CartPros directs you to the right part using the part numbers from this manual. Enter the part number into our search box and it will find the part you are looking for.

**GET STARTED
HERE**



<https://CartPros.com/f.html>

TABLE OF CONTENTS

HOW TO USE THE SERVICE PARTS MANUAL

This manual is divided into several sections:

GENERAL INFORMATION

- TABLE OF CONTENTS
- HOW TO USE THE SERVICE PARTS MANUAL

ILLUSTRATED PARTS BREAKDOWN

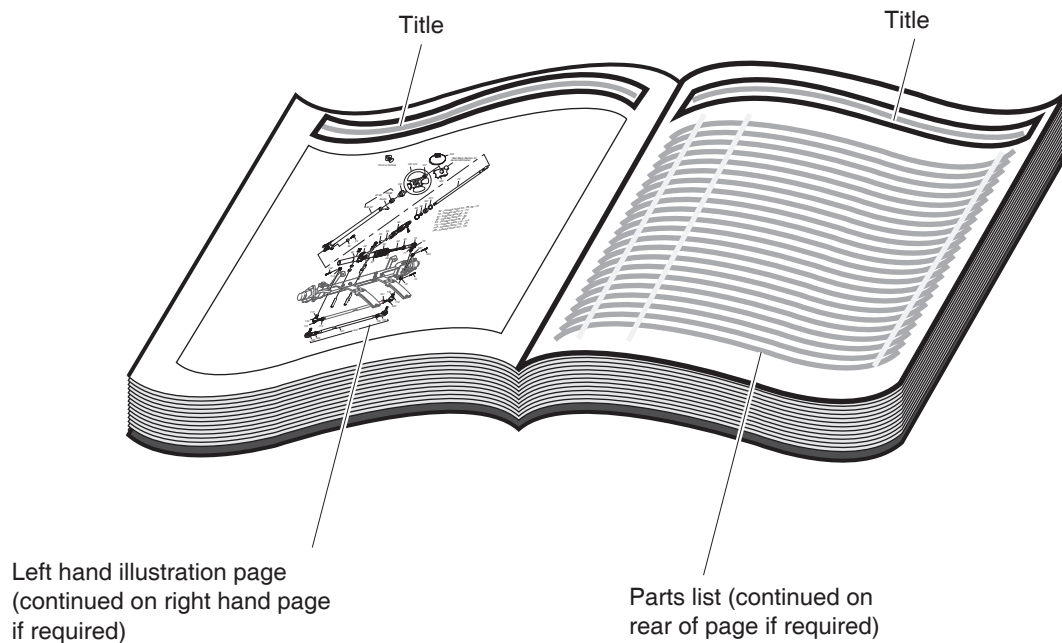
- Contains illustrations and parts lists for all systems of the vehicle

USE OF THE MANUAL

To use this manual, consult the TABLE OF CONTENTS (page iii) to locate the information or illustration required.

Introduction of some revisions varies due to supply of components; therefore, it is possible that various combinations of components may be found that are not directly reflected by each illustration. Consult the illustration that best suits your situation. Locate the serial number plate (see BODY located in the Illustrated Parts Breakdown section of this manual for its location) and note the complete number shown on the plate. It is important that the serial number of your vehicle and its model number be supplied to Service Parts when ordering any replacement components.

HOW TO USE THE SERVICE PARTS MANUAL



1. WHEN THE PART NUMBER IS NOT KNOWN

- Determine the function and application of the part required. Turn to the TABLE OF CONTENTS and select the most appropriate component description.
- Turn to the page number indicated and locate the part description in the parts list. Read the full accompanying description for specific information regarding the part that was not shown in the index.
- From the parts list, obtain the item number assigned to it and confirm that the part selected is correct by verifying it with the pictorial representation on the illustrated page.

2. IF YOU KNOW THE PART NUMBER

- Turn to the page number indicated and locate the part number in the parts list. Refer to the accompanying description for specific information regarding the part.
- From the parts list, obtain the item number assigned to it and confirm that the part selected is correct by verifying it with the pictorial representation on the illustrated page.

Should an asterisk (*) appear in the part number column on the parts list page, read upwards until a part number is found. The part number is the lowest assembly sold by Service Parts. The asterisk (*) indicates that the part depicted is not available for purchase.

NOTE: Descriptions are indented under the assembly that they are used on. That assembly is, in turn listed under the assembly that it is used on. This process is repeated until the highest final assembly is reached.

To facilitate the maintenance and repair of the vehicle, a Technician's Repair and Service Manual is available from the Service Parts Department.

HOW TO USE THE SERVICE PARTS MANUAL



When replacement parts are required, use genuine Cushman parts or parts with equivalent characteristics including type, strength and material. Failure to use proper replacement parts may result in product malfunction and possible injury to the operator and/or by standers.

Illustrations in this manual are for parts identification ONLY. These illustrations may not depict actual positioning of component parts and should NOT be used as assembly diagrams. Doing so may result in improper assembly, leading to sudden failure.

Cushman Inc, a Textron Company, reserves the right to make changes at any time, without notice, in specifications and models and also to discontinue models and accessories designed to be used on these models. The right is also reserved to change specifications or parts at any time without incurring any obligation to equip same on models manufactured prior to date of such change.

While the information contained in this parts manual is based on the latest product information available at the time of publication, the continuing accuracy of this parts manual cannot be guaranteed.

ACCESSORIES



In some cases accessories must be used in conjunction with other accessories to maintain safe operating conditions for a vehicle. Display of an accessory in this manual does not imply it can be used on any other vehicle. Using an accessory in a non-recommended application may create unsafe operating conditions.

NEVER attach ANY electrical device or accessory to this vehicle which is grounded to the vehicle frame.

VEHICLE IDENTIFICATION

THESE IDENTIFICATION NUMBERS MUST APPEAR ON ALL CORRESPONDENCE CONCERNING THE VEHICLE.

VEHICLE MODEL NUMBER/

MODEL YEAR & SERIAL NUMBER

The vehicle model number decal is located on upper left portion of kick panel. The complete (10) ten digit number is required to identify certain parts.



Model Number, Model Year and Serial Number on Decal

The vehicle serial number and model number are stamped on top of the left rear wheel well under the deck.



Vehicle Serial and Model Number on Top of Wheel Well

HOW TO USE THE SERVICE PARTS MANUAL

SERVICE PUBLICATIONS

Additional Parts Manuals are available:

ALSO

Operator's Manual:

Part No: 841463

Order for a minimum charge at this address:

EZ-GO

1451, MARVIN GRIFFIN RD,

AUGUSTA, GEORGIA – 30906

TOUCH-UP PAINT

Safety Yellow (lead free)

16 oz. (0.5L) spray can.....Part No. 833252

1 qt. (0.95L) can.....Part No. 833251

IMPORTANT

INDENTED PART NAMES INDICATE THESE PARTS ARE INCLUDED IN THE PRECEDING ASSEMBLY.

AFTER YOU IDENTIFY A PART BY THE REFERENCE NUMBER AND THE SIX DIGIT CUSHMAN PART NUMBER, **ALWAYS READ THE DESCRIPTION OF THE PART TO BE SURE IT IS WHAT YOU WANT.**

**DID YOU
KNOW?**

CartPros directs you to the right part using the part numbers from this manual. Enter the part number into our search box and it will find the part you are looking for.

**GET STARTED
HERE**

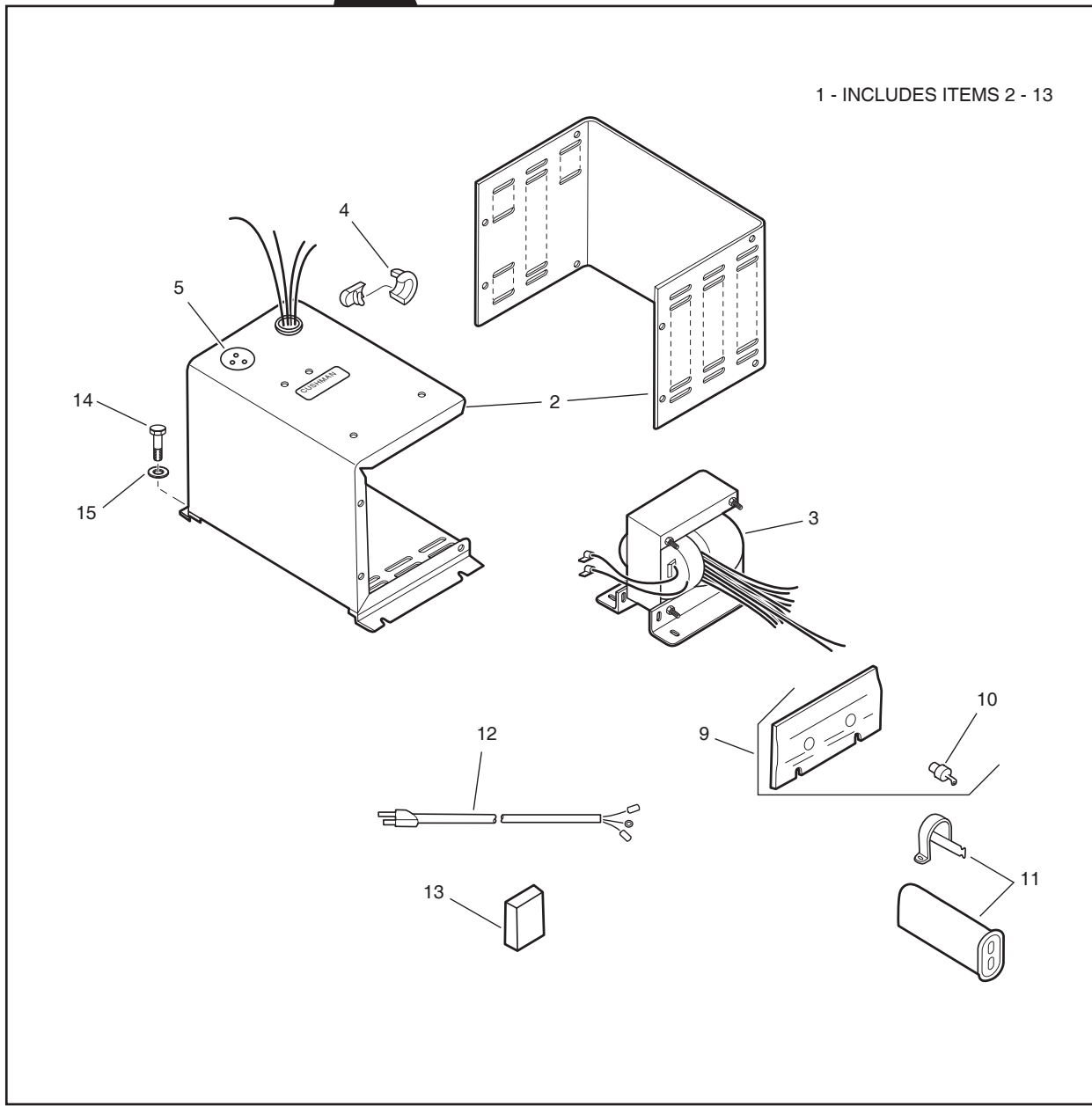
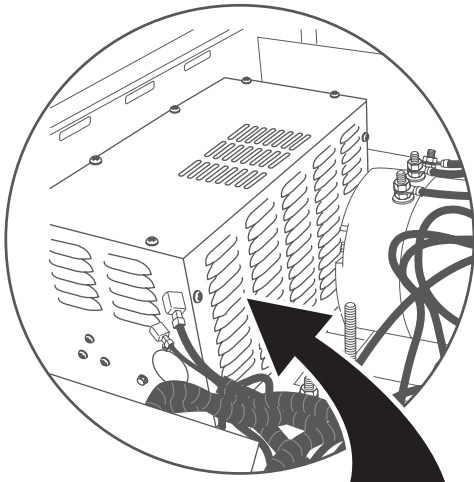


<https://CartPros.com/f.html>

ILLUSTRATED PARTS BREAKDOWN

ILLUSTRATED PARTS BREAKDOWN

BATTERY CHARGER

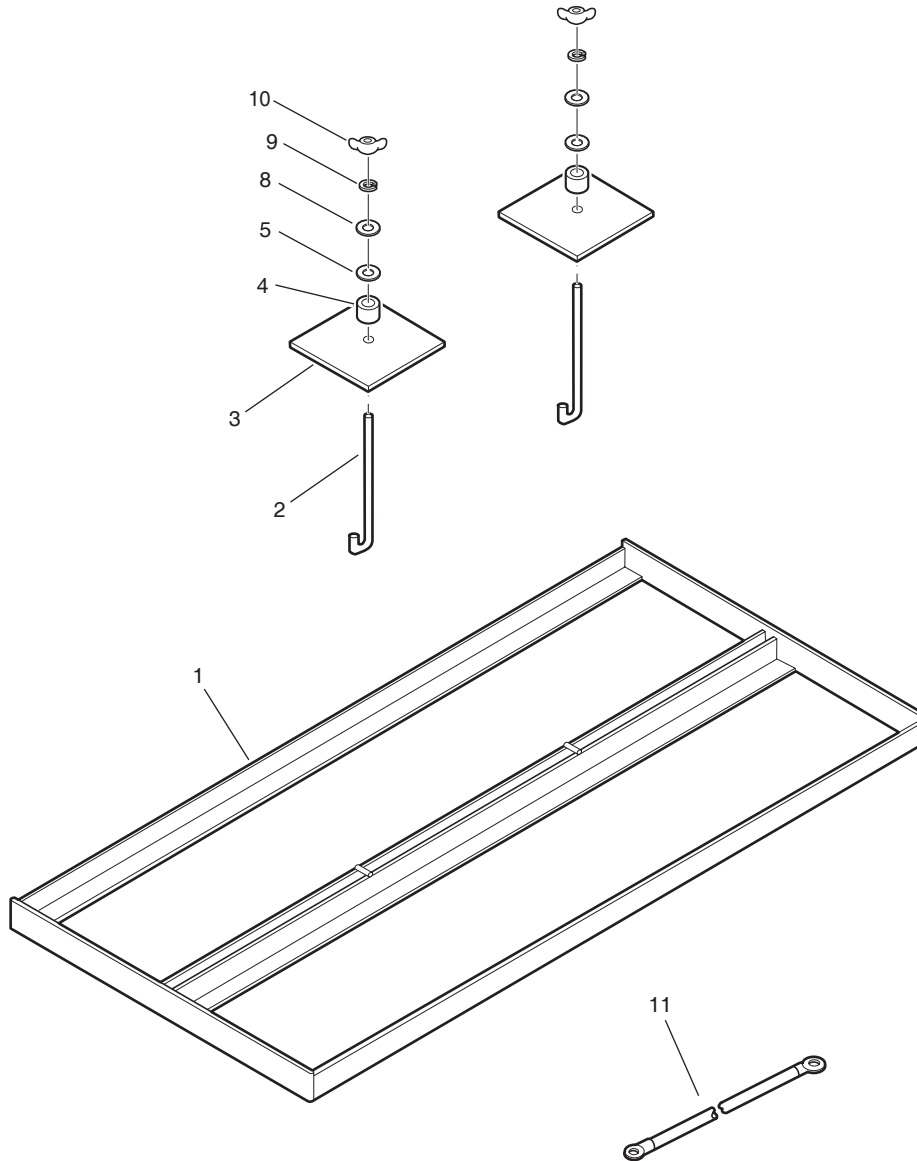


BATTERY CHARGER

THE USE OF NON U.L. PARTS WILL VOID ANY U.L. LISTING.
 When ordering parts, please specify the model and serial number of the product.
 * Indicates a component that is not available as an individual part.
 G** Indicates consult Customer Service Department for additional information.

ITEM	PART NO.	1 2 3 4 5	DESCRIPTION	QTY.
1	893090		CHARGER, COMPLETE, MODEL 17670, 25 AMP, 120 VAC, 60 HZ..... (1 - INCLUDES ITEMS 2-13)	1
2	*		CASE, LESTER NO. 24189S	1
3	*		TRANSFORMER, LESTER NO. 17745S	1
4	822048		BUSHING, A.C. CORD	1
5	883844		FUSE	1
6				
7				
8				
9	886435		HEATSINK WITH DIODES	1
10	892893		RELAY.....	1
11	823749		CAPACITOR, 6.0 MFD.	1
12	883216		A.C. CORDSET	1
13	893364		TIMER.....	1
14	800026		SCREW, 1/4-20 X 3/4" LG	4
15	308090		WASHER, 1/4"	4

BATTERY RACK & HOLD DOWNS

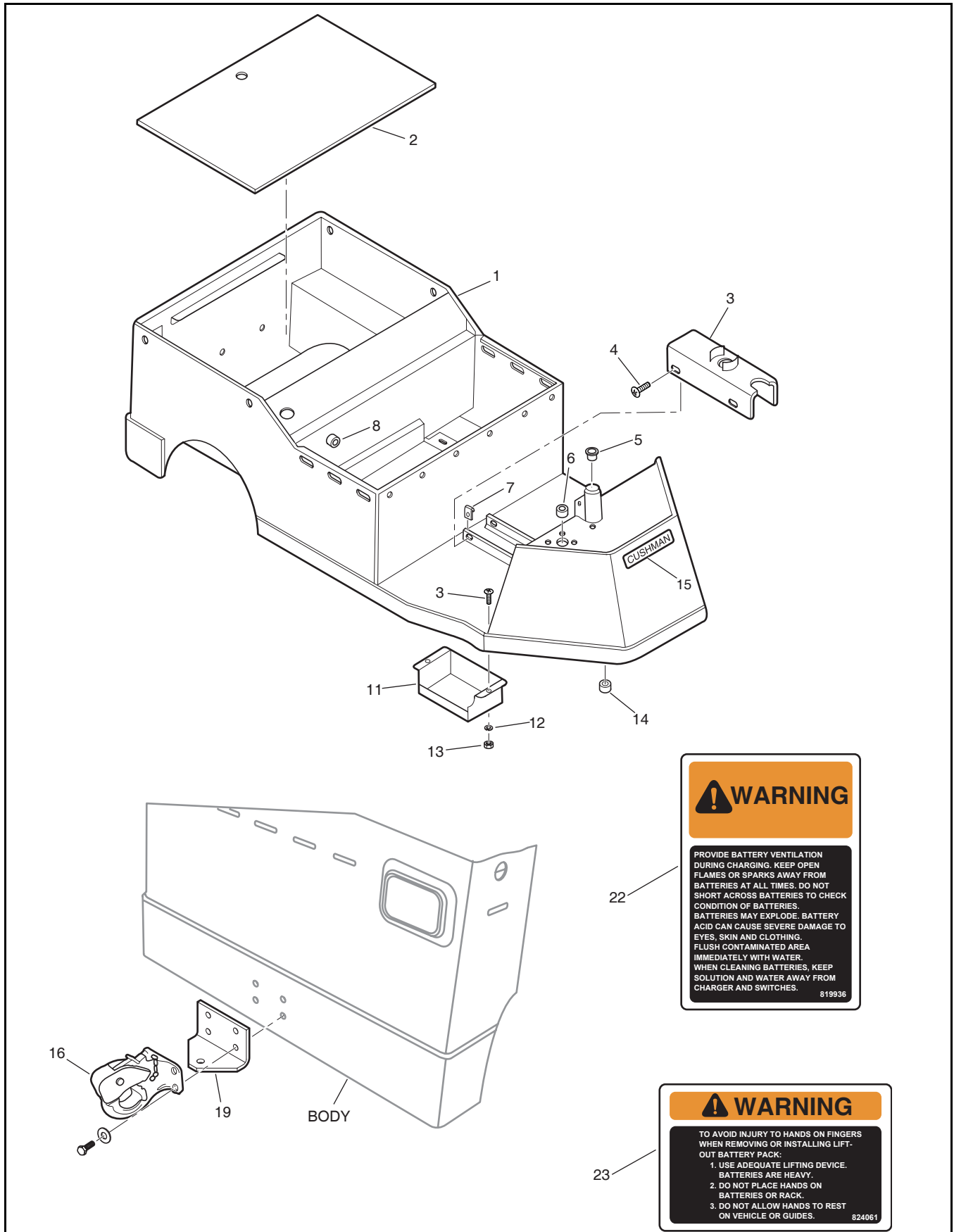


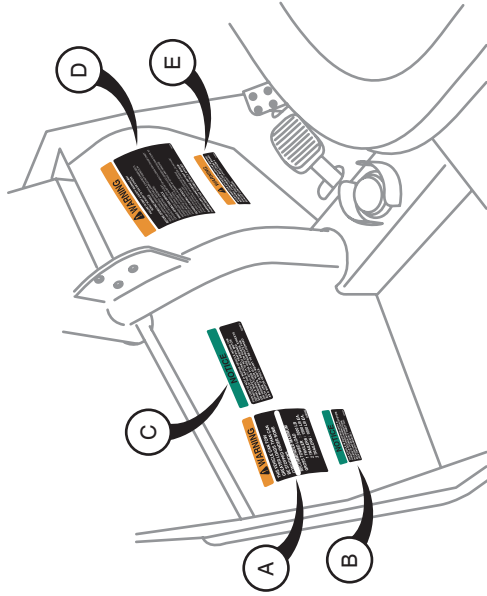
BATTERY RACK & HOLD DOWNS

THE USE OF NON U.L. PARTS WILL VOID ANY U.L. LISTING.
 When ordering parts, please specify the model and serial number of the product.
 * Indicates a component that is not available as an individual part.
 G** Indicates consult Customer Service Department for additional information.

ITEM	PART NO.	1 2 3 4 5	DESCRIPTION	QTY.
1	893147		RACK, BATTERY	1
2	806954		'J' BOLT.....	2
3	840695		BATTERY HOLD DOWN	2
4	818303		SPACER, RUBBER.....	2
5	809152		WASHER, 11/32"	2
6				
7				
8	103867		WASHER, 11/32"	2
9	306325		LOCK WASHER, 5/16".....	2
10	800315		WING NUT, 5/16-18	2
11	883078		WIRE 10".....	5

BODY





DETAIL A

WARNING

THIS VEHICLE CAN TOW GREATER LOADS THAN CAN BE STOPPED UNDER SOME CONDITIONS

RECOMMENDED MAXIMUM GROSS TOWED LOAD

- 1 TRAILER : 3000 LB
- 2 TRAILERS : 1500 LB EA.
- 3 TRAILERS : 1000 LB EA.

830982

DETAIL B

NOTICE

THIS VEHICLE IS EQUIPPED WITH A THROTTLE-SOLENOID INTERLOCK SYSTEM. IN CASE OF POWER INTERRUPTION, RELEASE AND REAPPLY THROTTLE. (SEE OWNER'S MANUAL)

825396

DETAIL C

NOTICE

THIS UNIT IS NOT A MOTOR VEHICLE WITHIN THE DEFINITION OF THE NATIONAL TRAFFIC MOTOR VEHICLE SAFETY ACT. IT IS NOT DESIGNED OR MANUFACTURED FOR USE ON ROADS, STREETS OR HIGHWAYS. THIS UNIT IS APPROPRIATE FOR SUCH USE ONLY IF IT IS LICENSED OR REGISTERED AS A MOTOR VEHICLE.

821071

DETAIL D

WARNING

FAILURE TO OBEY A SAFETY WARNING MAY RESULT IN INJURY TO YOU OR OTHERS

BEFORE OPERATING VEHICLE

READ AND UNDERSTAND OPERATORS MANUAL (LOCATED UNDER SEAT). DO NOT CARRY PASSENGERS. SWITCHES SPARK-DO NOT OPERATE IN EXPLOSIVE OR COMBUSTIBLE ATMOSPHERE.

WHILE OPERATING VEHICLE

KEEP BODY INSIDE VEHICLE. STAY IN SEAT. SUDDEN SHARP TURNS, UNBALANCED OR TOP-HEAVY LOADS CAN CAUSE UPSET. ADJUST SPEED TO CONDITIONS. CARGO MUST BE SECURED TO PLATFORM. AVOID SUDDEN STARTS AND STOPS TO AVOID SHIFTING LOADS AND JACKKNIFE OF VEHICLE AND TRAILERS.

BEFORE LEAVING VEHICLE

SET DIRECTION SELECTOR TO "OFF" TURN KEY TO VERTICAL "OFF" POSITION AND REMOVE IF MALFUNCTION OCCURS, OR ADJUSTMENT IS NEEDED. DO NOT USE.

WARNING-APPLY HAND BRAKE OR FOOT BRAKE- PARKING BRAKE NOT AUTOMATICALLY APPLIED

832135

DETAIL E

WARNING

CLEAN MASTER CYLINDER FILLER CAP BEFORE REMOVING. CONTAMINATES MAY CAUSE BRAKE FAILURE. USE ONLY D.O.T. 3 FLUID FROM A SEALED CONTAINER.

825822

27

28

24

25

26

BODY

THE USE OF NON U.L. PARTS WILL VOID ANY U.L. LISTING.

When ordering parts, please specify the model and serial number of the product.

* Indicates a component that is not available as an individual part.

G** Indicates consult Customer Service Department for additional information.

ITEM	PART NO.	1 2 3 4 5	DESCRIPTION	QTY.
1	887192		BODY & FRAME, COMPLETE WITH SPINDLE BEARING AND DECALS.....	1
2	831938		DECK, REAR	1
3	887921		COVER, MASTER CYLINDER	1
4	800026		SCREW, 1/4-20 X 3/4" LG	6
5	869138		BEARING	1
6	829997		GROMMET	2
7	800279		NUT, 1/4-20.....	4
8				
9				
10				
11	841366		GUARD, ACCELERATOR PEDAL.....	1
12	306396		LOCK WASHER, 1/4".....	2
13	306375		NUT, 1/4-20.....	2
14	821606		GROMMET	1
15	831443		NAMEPLATE, CUSHMAN	1
16	825153		PINTLE HITCH.....	1
17				
18				
19	822829		HITCH PLATE	1
20				
21				
22	819936		DECAL, BATTERY CHARGING	2
23	824061		DECAL, WARNING	1
24	830982		DECAL, TOWING, WARNING	1
25	825394		DECAL, INTERLOCK.....	1
26	821071		DECAL, NOTICE.....	1
27	832135		DECAL, WARNING	1
28	825622		DECAL, BRAKE FLUID, WARNING	1

**DID YOU
KNOW?**

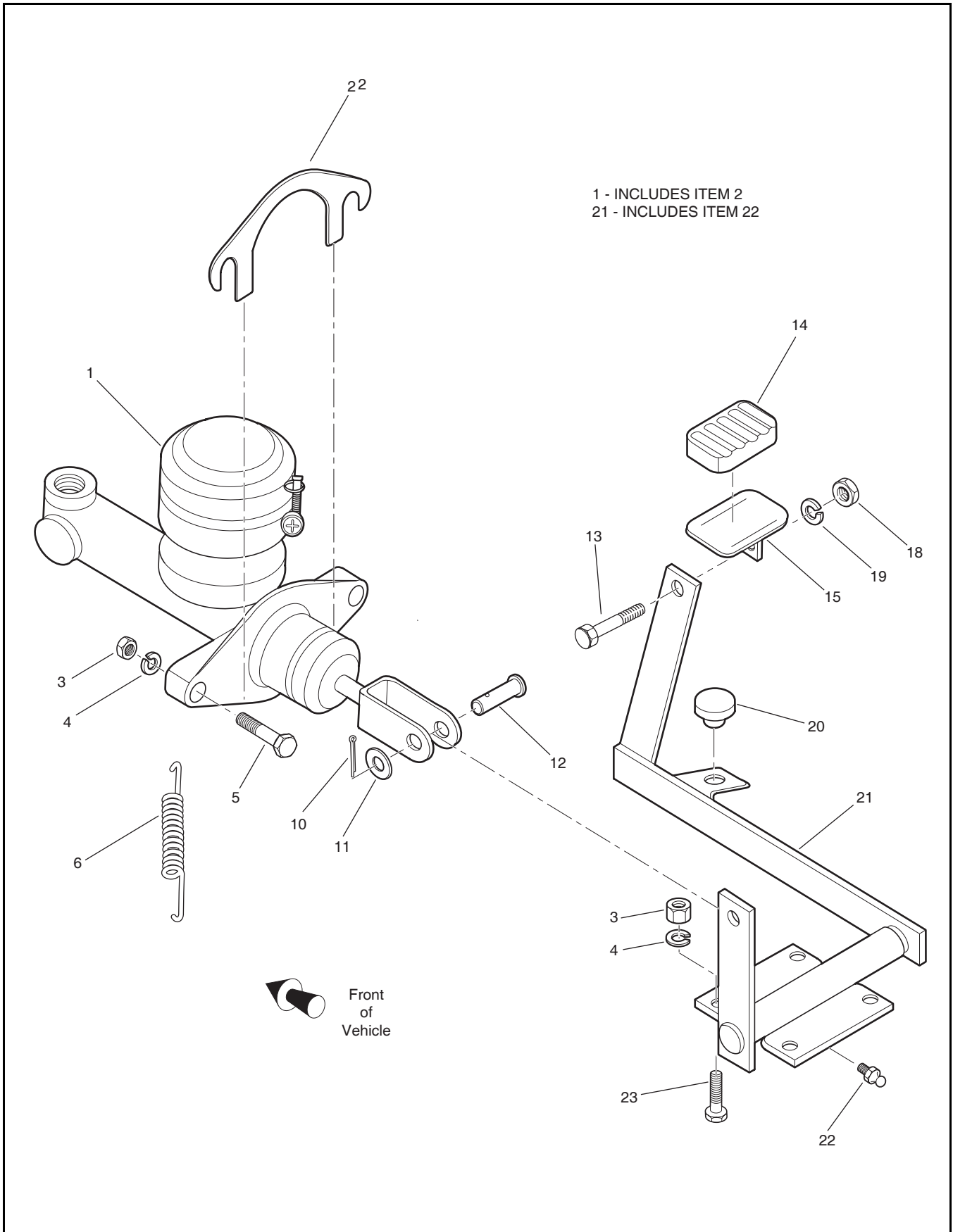
CartPros directs you to the right part using the part numbers from this manual. Enter the part number into our search box and it will find the part you are looking for.

**GET STARTED
HERE** →

<https://CartPros.com/f.html>

BODY

BRAKE - MASTER CYLINDER

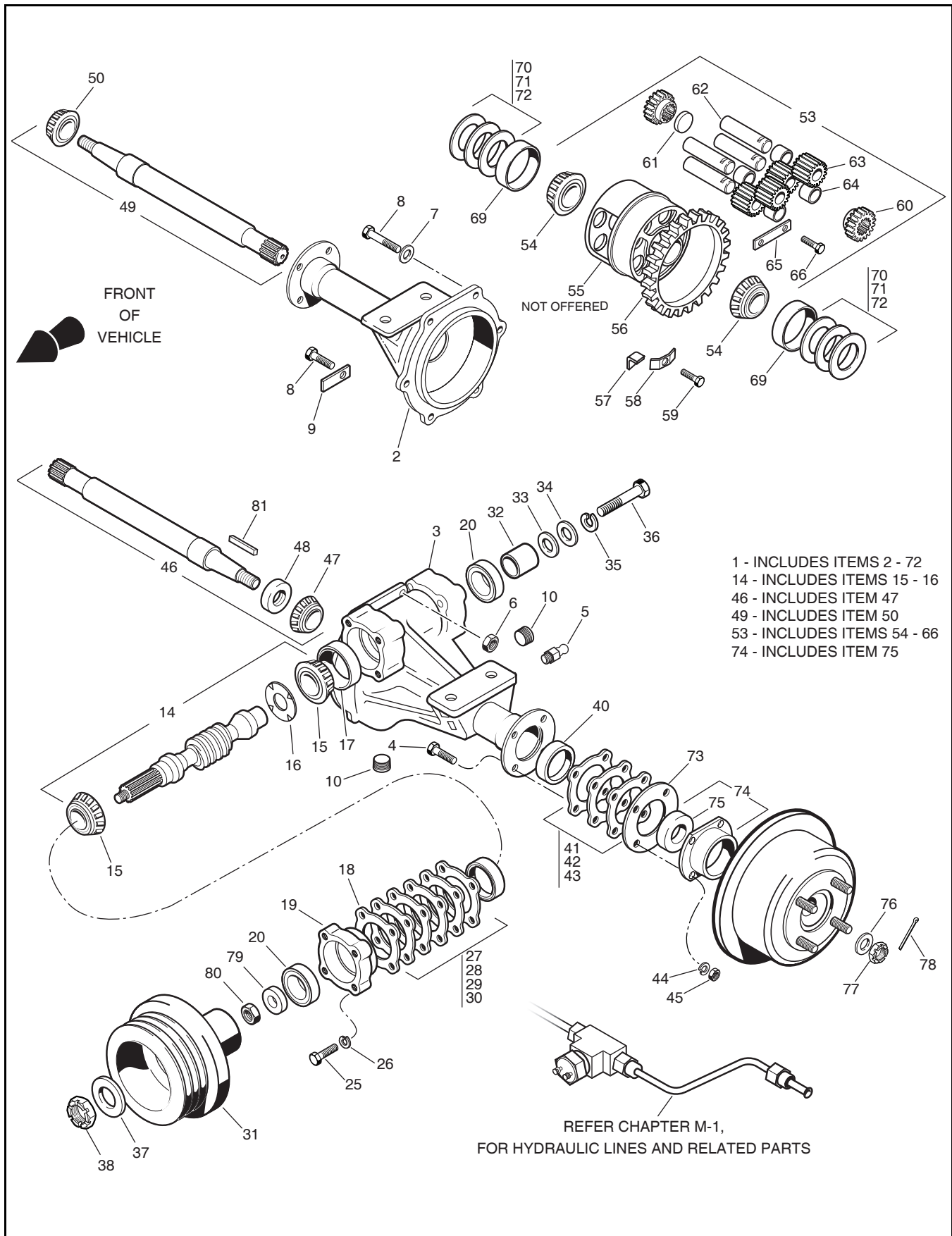


BRAKE - MASTER CYLINDER

THE USE OF NON U.L. PARTS WILL VOID ANY U.L. LISTING.
 When ordering parts, please specify the model and serial number of the product.
 * Indicates a component that is not available as an individual part.
 G** Indicates consult Customer Service Department for additional information.

ITEM	PART NO.	1 2 3 4 5	DESCRIPTION	QTY.
1	887364		CYLINDER, MASTER (1 - INCLUDES ITEM 2).....	1
2	836873		SHIM.....	AR
3	306932		NUT, 5/16-18.....	6
4	306325		LOCK WASHER, 5/16".....	6
5	306435		BOLT, 5/16-18 X 1 1/4" LG.....	2
6	805444		SPRING, BRAKE PEDAL RETURN.....	1
7				
8				
9				
10	306328		PIN, COTTER, 3/32 X 3/4.....	1
11	103867		WASHER, 5/16".....	1
12	806714		PIN, CLEVIS.....	1
13	306414		BOLT, 3/8-16 X 1" LG.....	1
14	810152		COVER, BRAKE PEDAL.....	1
15	875212		PEDAL, BRAKE.....	1
16				
17				
18	306562		NUT, 3/8-16.....	1
19	120177		LOCK WASHER, 3/8.....	1
20	810149		BUMPER, RUBBER.....	1
21	887771		BRAKE PEDAL & BUSHING (21 - INCLUDES ITEM 22).....	1
22	807439		FITTING, LUBRICATION.....	1
23	306416		BOLT, 5/16-18 X 1" LG.....	4

DIFFERENTIAL



DIFFERENTIAL

THE USE OF NON U.L. PARTS WILL VOID ANY U.L. LISTING.

When ordering parts, please specify the model and serial number of the product.

* Indicates a component that is not available as an individual part.

G** Indicates consult Customer Service Department for additional information.

ITEM	PART NO.	1 2 3 4 5	DESCRIPTION	QTY.
1	887996		DIFFERENTIAL, COMPLETE (1 - INCLUDES ITEMS 2 - 72)	1
2	883436		HOUSING, RIGHT	1
3	880639		HOUSING, LEFT	1
4	806251		BOLT, SPECIAL LG.....	8
5	827486		VALVE, BREATHER.....	1
6	800290		NUT, 5/16-18, LOCK.....	6
7	103867		WASHER, 5/16"	5
8	304055		BOLT, 5/16-18 X 1 3/8" LG.....	6
9	816046		TAG, RATIO (15.67:1)	1
10	800356		PLUG, FILLER DRAIN.....	2
11				
12				
13				
14	880986		WORM, WITH BEARING & SLINGER (14 - INCLUDES ITEMS 15 - 16).....	1
15	814475		BEARING CONE, ROLLER	2
16	886706		SLINGER SET, OIL.....	1
17	814476		CUP, ROLLER BEARING.....	2
18	814465		GASKET	2
19	814226		RETAINER, BEARING.....	1
20	812335		SEAL.....	2
21				
22				
23				
24				
25	551094		BOLT, 3/8-16 X 1 3/4" LG.....	4
26	120177		LOCK WASHER, 3/8"	4
27	814466		SHIM, .005	AR
28	814467		SHIM, .010.....	AR
29	814468		SHIM, .030.....	AR
30	816515		SHIM, .003.....	AR

DIFFERENTIAL

THE USE OF NON U.L. PARTS WILL VOID ANY U.L. LISTING.

When ordering parts, please specify the model and serial number of the product.

* Indicates a component that is not available as an individual part.

G** Indicates consult Customer Service Department for additional information.

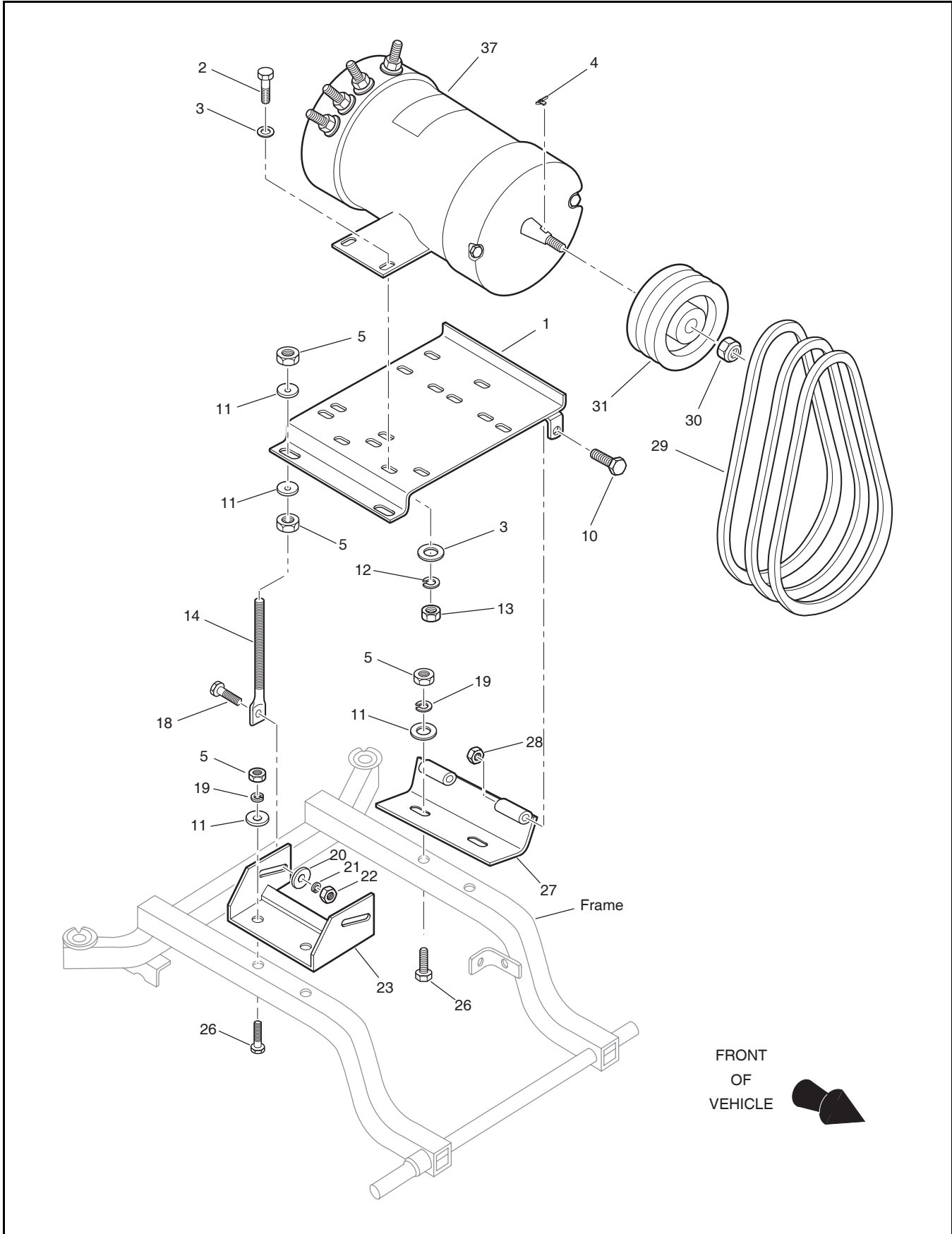
ITEM	PART NO.	1	2	3	4	5	DESCRIPTION	QTY.
31	815597						PULLEY (140 MM).....	1
32	829455						HUB, REAR	1
33	816446						WASHER, SPECIAL.....	1
34	306982						WASHER, 7/16".....	1
35	303269						LOCK WASHER, 7/16".....	1
36	306838						BOLT, 7/16-14 X 1" LG.....	1
37	809180						WASHER.....	1
38	800198						CONE LOCK NUT, 1/2-20.....	2
39								
40	814474						CUP, ROLLER BEARING.....	2
41	805320						SHIM, .005.....	AR
42	805321						SHIM, .010.....	AR
43	805322						SHIM, .030.....	AR
44	306325						LOCK WASHER, 5/16".....	8
45	306932						NUT, 5/16-18.....	8
46	882052						AXLE, LEFT, 15 7/8" (403 MM) (46 - INCLUDES ITEM 47).....	1
47	814473						BEARING CONE, ROLLER.....	1
48	814477						SEAL, REAR AXLE.....	2
49	883422						AXLE, RIGHT, 14 9/16" (370 MM) (49 - INCLUDES ITEM 50).....	1
50	814473						BEARING CONE, ROLLER.....	1
51								
52								
53	880176						GEAR CARRIER, (15.67:1 RATIO) (53 - INCLUDES ITEMS 54 - 66).....	1
54	386767						BEARING CONE, CARRIER.....	2
55							HOUSING, CARRIER.....	1
56	816038						GEAR, WORM (15.67:1 RATIO).....	1
57	816824						PLATE, LOCKING.....	2
58	816823						PLATE, RETAINER.....	2
59	306555						BOLT, 5/16-18 X 3/4" LG.....	2
60	842093						GEAR, AXLE SHAFT.....	2

DIFFERENTIAL

THE USE OF NON U.L. PARTS WILL VOID ANY U.L. LISTING.
 When ordering parts, please specify the model and serial number of the product.
 * Indicates a component that is not available as an individual part.
 G** Indicates consult Customer Service Department for additional information.

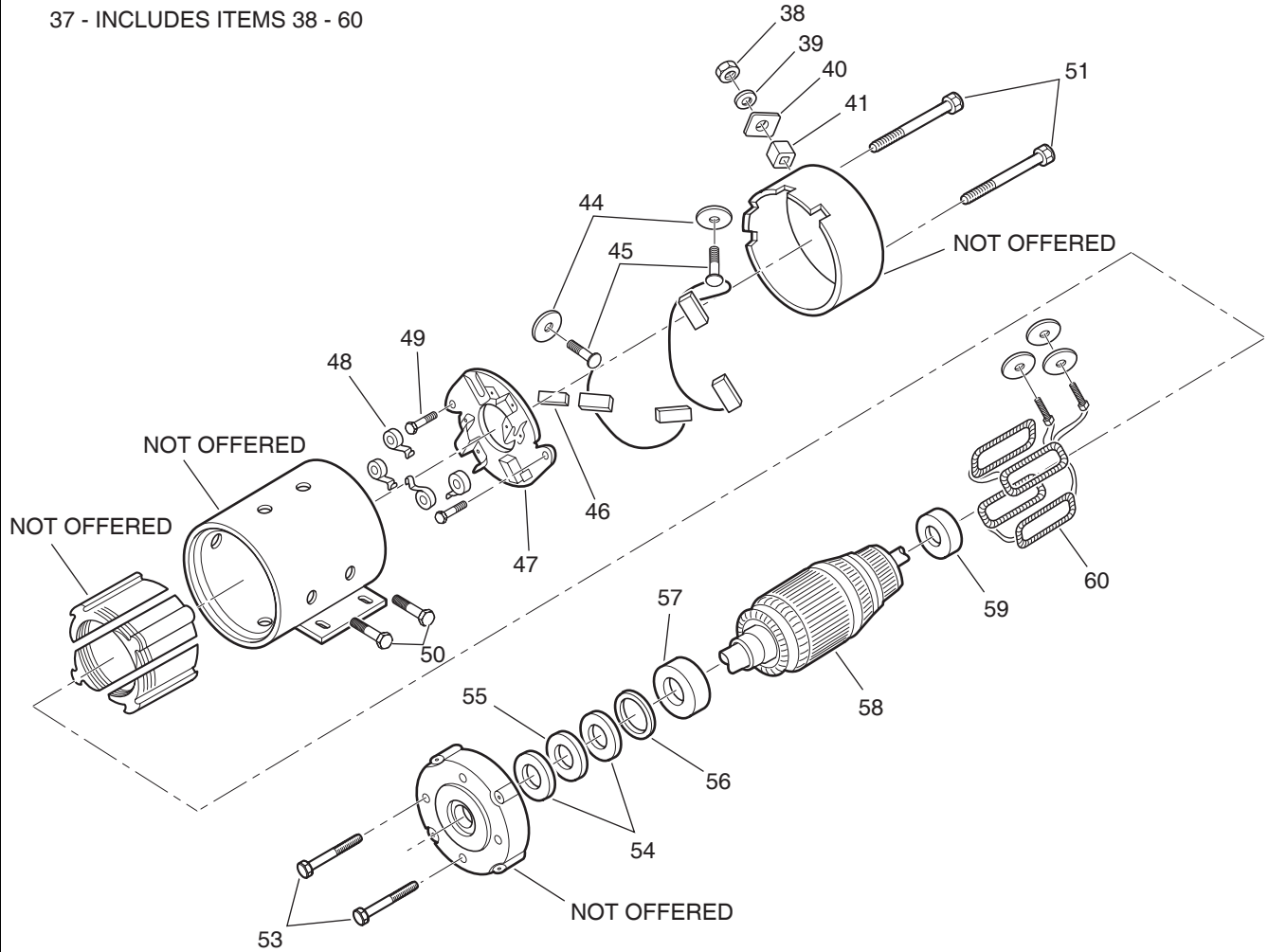
ITEM	PART NO.	1	2	3	4	5	DESCRIPTION	QTY.
61	814484						SPACER.....	1
62	816825						SHAFT, DIFFERENTIAL GEAR.....	4
63	842094						GEAR, DIFFERENTIAL PLANET.....	4
64	814483						SPACER.....	4
65	815794						PLATE, LOCKING.....	3
66	306835						BOLT, SPECIAL LG.....	6
67								
68								
69	320122						CUP, ROLLER BEARING.....	2
70	814469						SHIM, .003.....	AR
71	814470						SHIM, .005.....	AR
72	814471						SHIM, .010.....	AR
73	808303						GASKET, BEARING.....	2
74	879476						SEAL & RETAINER (74 - INCLUDES ITEM 75).....	2
75	814488						SEAL, BEARING.....	1
76	836674						WASHER, SPECIAL.....	2
77	805843						NUT, 5/8-18, CASTLE.....	2
78	304636						PIN, COTTER, 1/8 X 1 1/8.....	2
79	809180						WASHER, SPECIAL.....	1
80	800198						NUT, 1/2-20, CONELOCK.....	1
81	805875						KEY, HUB.....	2

DRIVE MOTOR



DRIVE MOTOR

37 - INCLUDES ITEMS 38 - 60



DRIVE MOTOR

Where applicable, THE USE OF NON UL PARTS WILL VOID ANY UL LISTING.
 When ordering parts, please specify the model and serial number of the product.
 * Indicates a component that is not available as an individual part.
 G** Indicates consult Customer Service Department for additional information.

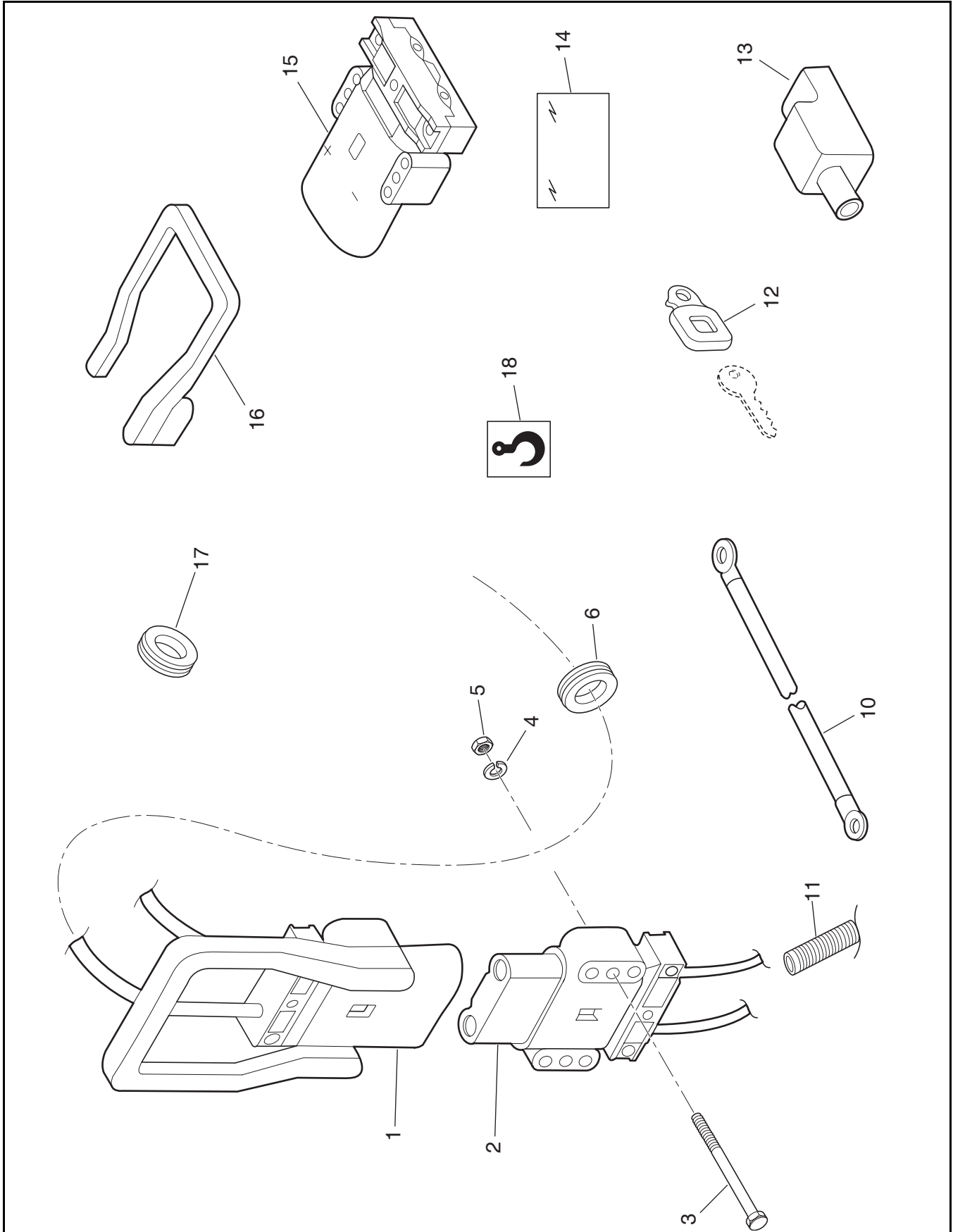
ITEM	PART NO.	1 2 3 4 5	DESCRIPTION	QTY.
1	887778		MOUNTING PLATE	1
2	306416		BOLT, 5/16 - 18 X 1" LG	4
3	103867		WASHER, 5/16"	8
4	551041		KEY, WOODRUFF # 6	1
5	304364		NUT, 7/16 - 14	8
6				
7				
8				
9				
10	2702117		BOLT, 3/8 - 16 X 2" LG	2
11	306982		WASHER, 7/16"	8
12	306325		LOCK WASHER, 5/16"	4
13	306932		NUT, 5 - 16 - 18	4
14	815558		ADJUSTING ROD	2
15				
16				
17				
18	306414		BOLT, 3/8 - 16 X 1" LG	2
19	303269		LOCK WASHER, 7/16"	4
20	306981		WASHER, 3/8"	2
21	120177		LOCK WASHER, 3/8"	2
22	306562		NUT, 3/8 - 16	2
23	881759		BRACKET	1
24				
25				
26	311397		BOLT, 7/16 - 14 X 3" LG	4
27	880093		SUPPORT MOUNT	1
28	800292		NUT, CENTRE LOCK, 3/8 - 16	2
29	883921		V-BELT SET (3)	1
30	800198		NUT, CONE LOCK, 1/2 - 20	2

DRIVE MOTOR

Where applicable, THE USE OF NON UL PARTS WILL VOID ANY UL LISTING.
 When ordering parts, please specify the model and serial number of the product.
 * Indicates a component that is not available as an individual part.
 G** Indicates consult Customer Service Department for additional information.

ITEM	PART NO.	1 2 3 4 5	DESCRIPTION	QTY.
31	815582		PULLEY, 4 1/2" O.D (114 MM).....	1
32				
33				
34				
35				
36				
37	885535		MOTOR, 3 HP (37 - INCLUDES ITEMS 38 - 60)	1
38	306932		NUT, 5/16 - 18	8
39	824713		WASHER	4
40	824718		WASHER, INSULATING.....	4
41	824711		BUSHING.....	4
42				
43				
44	824710		WASHER, INSULATING.....	5
45	886026		BRUSH	2
46	*		BOLT POLE PIECE	1
47	*		BRUSH & SPRINGS.....	1
48	824754		BRUSH SPRING.....	4
49	823023		BOLT, HOLDER.....	2
50	*		BOLT, POLE	8
51	*		BOLT CLAMP	2
52				
53	*		BOLT MOTOR CLAMP	2
54	*		WASHER SPRING	2
55	*		SPACER	1
56	*		SHIM.....	AR
57	826681		BEARING PULLEY	1
58	836253		ARMATURE.....	1
59	832498		BEARING COMMUTATOR.....	1
60	889712		FIELD COIL	1

EC CONVERSION KIT



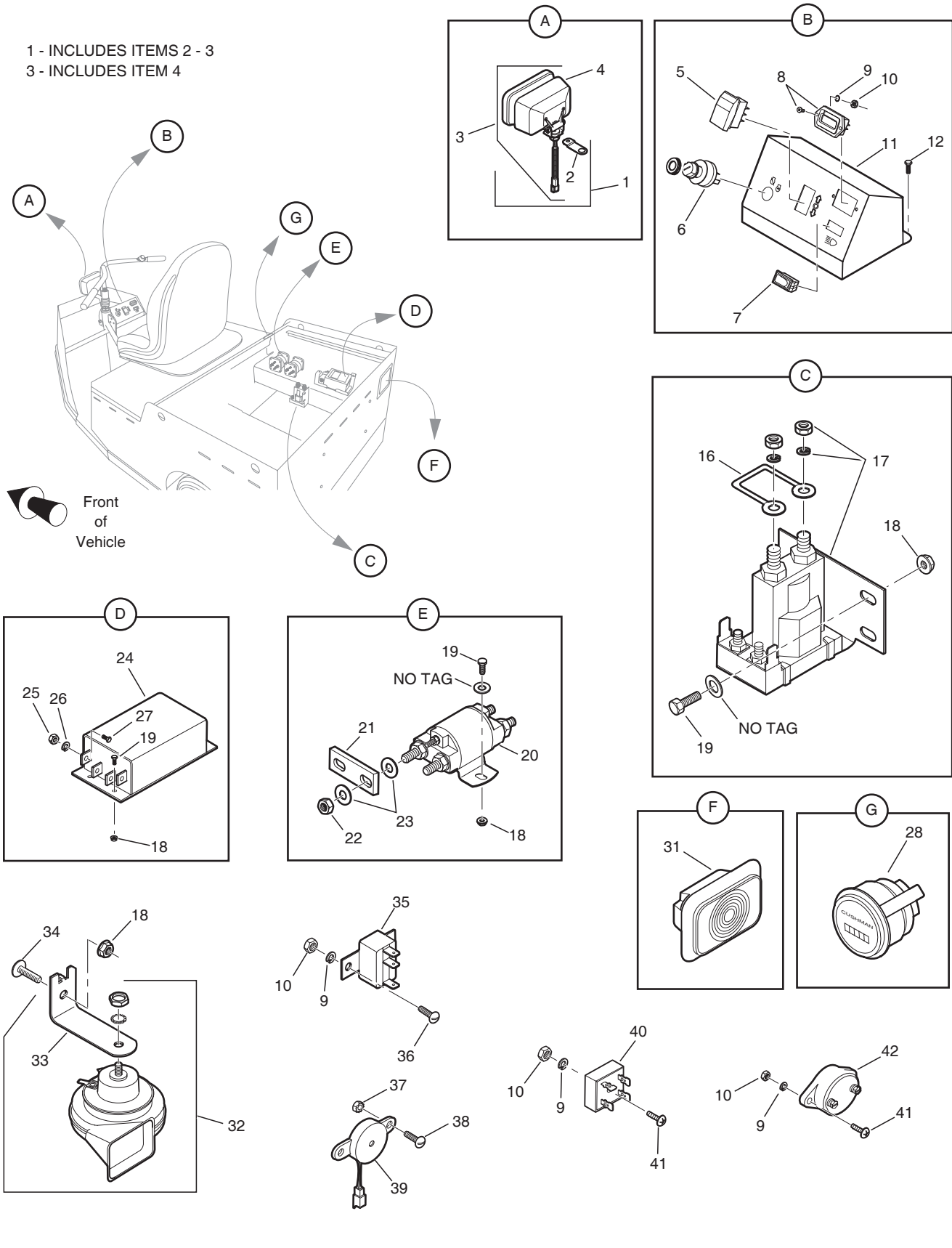
EC CONVERSION KIT

THE USE OF NON U.L. PARTS WILL VOID ANY U.L. LISTING.
 When ordering parts, please specify the model and serial number of the product.
 * Indicates a component that is not available as an individual part.
 G** Indicates consult Customer Service Department for additional information.

ITEM	PART NO.	1 2 3 4 5	DESCRIPTION	QTY.
1	891657		CONNECTOR, 36V, COMPLETE	1
2	891693		CONNECTOR, BATTERY 36V, EC	1
3	800024		BOLT, 1/4-20 X 1 1/2" LG	2
4	306396		LOCK WASHER, 1/4".....	2
5	306375		NUT, 1/4-20.....	2
6	813997		GROMMET.....	1
7				
8				
9				
10	882954		WIRE, 6 GA, (BLACK).....	5
11	825947		TUBING.....	AR
12	837297		COVER, KEY HEAD	2
13	837462		BOOT, BATTERY TERMINAL	12
14	837408		DECAL, BATTERY IDENTIFICATION	1
15	836890		CONNECTOR	1
16	836889		HANDLE.....	1
17	828247		GROMMET.....	1
18	837322		DECAL	3

ELECTRICAL COMPONENTS

1 - INCLUDES ITEMS 2 - 3
3 - INCLUDES ITEM 4



ELECTRICAL COMPONENTS

THE USE OF NON U.L. PARTS WILL VOID ANY U.L. LISTING.
 When ordering parts, please specify the model and serial number of the product.
 * Indicates a component that is not available as an individual part.
 G** Indicates consult Customer Service Department for additional information.

ITEM	PART NO.	1 2 3 4 5	DESCRIPTION	QTY.
1	892942		HEADLIGHT SET(Accessory) (1 - INCLUDES ITEMS 2 - 3)	1
2	840854		BRACKET, HEADLIGHT	1
3	892523		HEADLIGHT (3 - INCLUDES ITEM 4)	1
4	840860		BULB, HEADLIGHT	1
5	836354		SWITCH, FORWARD / REVERSE	1
6	886311		SWITCH, IGNITION	1
7	830640		SWITCH, ROCKER	1
8	841111		GAUGE BATTERY CONDITION	1
9	120052		WASHER, #10	9
10	306531		NUT, #10-24	7
11	840496		PANEL, CONTROL	1
12	548013		SCREW, TAPPING, 1/4-20 X 1/2" LG	2
13				
14				
15				
16	893142		RESISTOR	1
17	2703802		CONTACTOR	1
18	548910		NUT, 1/4-20	10
19	800026		BOLT, 1/4-20 X 1 3/4" LG	11
20	20468-05		SOLENOID	2
21	840273		BAR, SOLENOID BUS	2
22	306320		NUT, 5/16 X 24	4
23	103867		WASHER, 5/16"	8
24	893392		CONTROLLER, SPEED	1
25	306932		NUT, 5/16-18	4
26	306325		LOCK WASHER, 5/16"	4
27	306450		BOLT, 5/16-18 X 3/4" LG	4
28	885240		HOUR METER	1
29				
30				

ELECTRICAL COMPONENTS

THE USE OF NON U.L. PARTS WILL VOID ANY U.L. LISTING.
 When ordering parts, please specify the model and serial number of the product.
 * Indicates a component that is not available as an individual part.
 G** Indicates consult Customer Service Department for additional information.

ITEM	PART NO.	1 2 3 4 5	DESCRIPTION	QTY.
31	892676		LIGHT, RED (TAIL LIGHT).....	1
32	886425		HORN.....	1
33	829694		BRACKET, HORN.....	1
34	800017		SCREW, 1/4-20 X 1" LG.....	1
35	829780		CIRCUIT BREAKER, 20 AMP.....	1
36	800271		SCREW, #10-24 X 1/2" LG.....	2
37	800587		NUT, #4-40 WITH LOCK WASHER.....	2
38	800439		SCREW, #4-40 X 3/4" LG.....	2
39	890000		BUZZER.....	1
40	840679		RECTIFIER BRIDGE.....	1
41	800299		SCREW, #10-24 X 1" LG.....	3
42	824800		CIRCUIT BREAKER (150 AMP).....	1

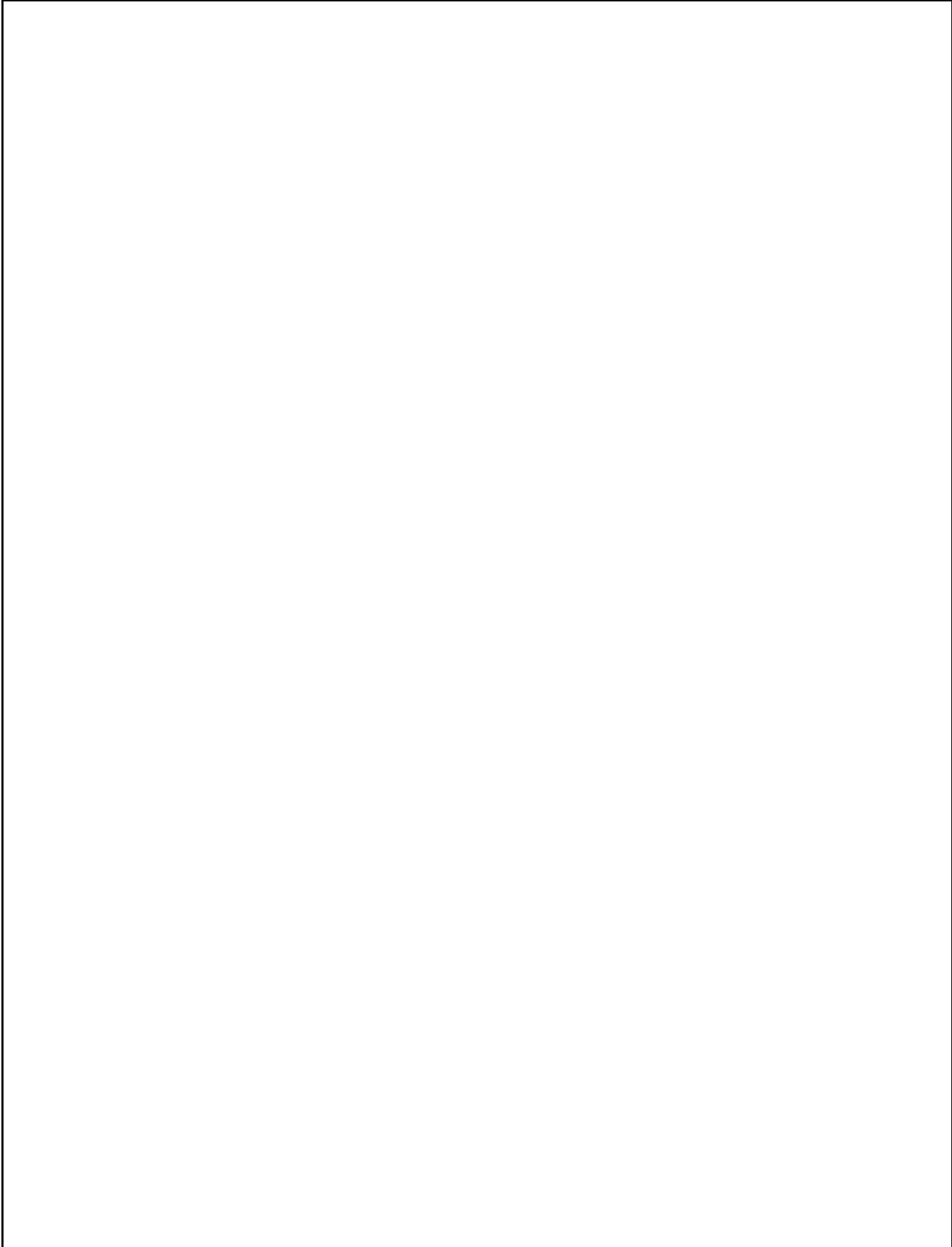
**DID YOU
KNOW?**

CartPros directs you to the right part using the part numbers from this manual. Enter the part number into our search box and it will find the part you are looking for.

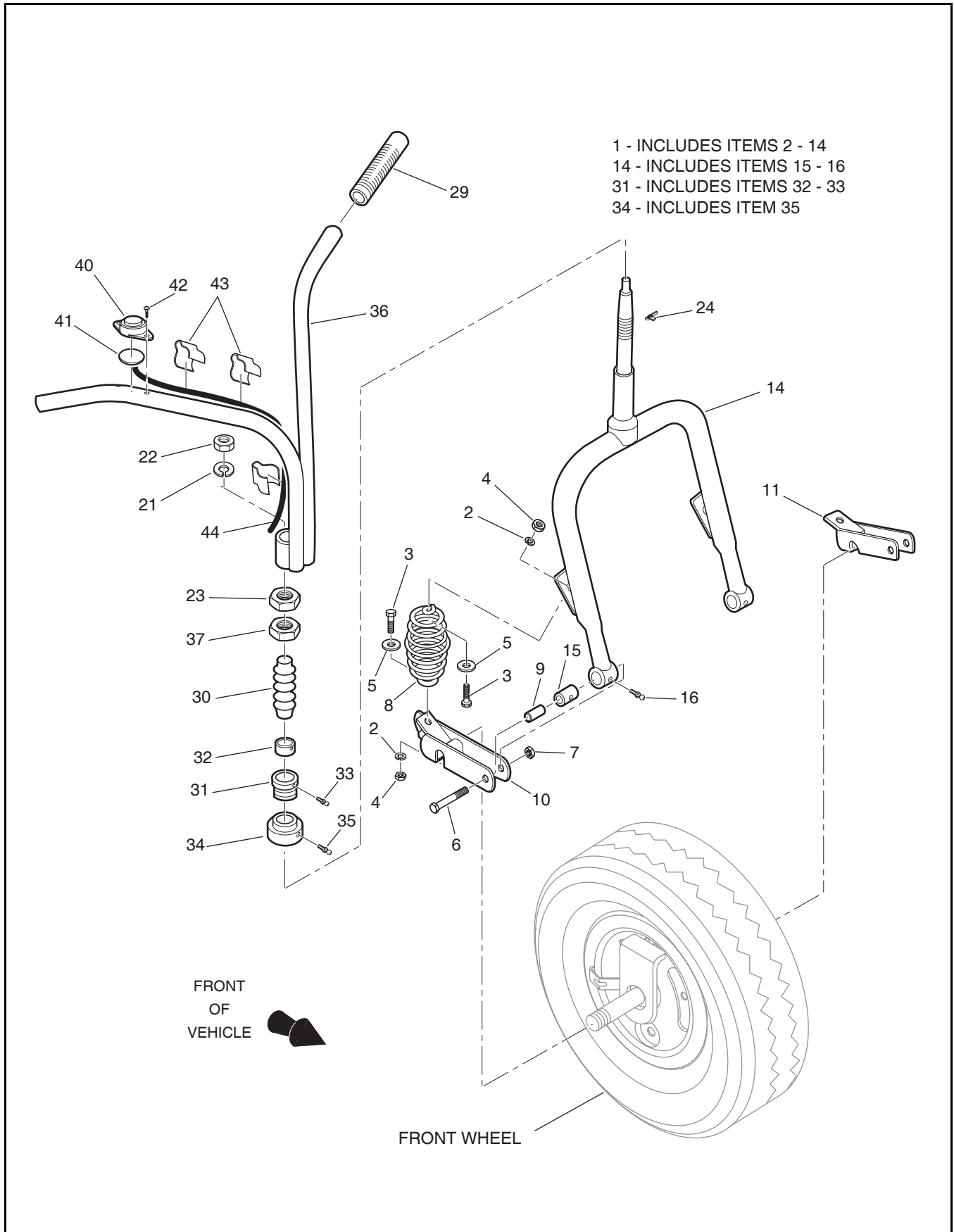
**GET STARTED
HERE** →

<https://CartPros.com/f.html>

ELECTRICAL COMPONENTS



FORK AND HANDLE BAR



FORK AND HANDLE BAR

THE USE OF NON U.L. PARTS WILL VOID ANY U.L. LISTING.
 When ordering parts, please specify the model and serial number of the product.
 * Indicates a component that is not available as an individual part.
 G** Indicates consult Customer Service Department for additional information.

ITEM	PART NO.	1 2 3 4 5	DESCRIPTION	QTY.
1	884127		FORK COMPLETE (1 - INCLUDES ITEMS 2 - 14).....	1
2	120177		LOCK WASHER, 3/8"	4
3	306414		BOLT, 3/8 - 16 X 1" LG	4
4	306562		NUT, 3/8 - 16	4
5	306981		WASHER, 3/8"	4
6	311396		BOLT, 7/16 - 14 X 2" LG	2
7	800293		NUT, 7/16 - 14	2
8	805383		SPRING	2
9	808969		SPACER	2
10	882188		ARM SIDE (RIGHT)	1
11	894070		ARM SIDE (LEFT)	1
12				
13				
14	884064		FORK (14 - INCLUDES ITEMS 15 - 16).....	1
15	805189		BEARING, FORK	1
16	807439		GREASE FITTING, 1/4 - 28	1
17				
18				
19				
20				
21	120166		LOCK WASHER, 1/2".....	1
22	301988		NUT, 1/2 - 20.....	1
23	305134		NUT, 7/8 - 14.....	2
24	551041		WOODRUFF KEY, #6.....	2
25				
26				
27				
28				
29	807472		HAND GRIP	2
30	831909		BOOT	1

FORK AND HANDLE BAR

THE USE OF NON U.L. PARTS WILL VOID ANY U.L. LISTING.

When ordering parts, please specify the model and serial number of the product.

* Indicates a component that is not available as an individual part.

G** Indicates consult Customer Service Department for additional information.

ITEM	PART NO.	1 2 3 4 5	DESCRIPTION	QTY.
31	880363		BEARING UPPER (31 - INCLUDES ITEMS 32 - 33).....	1
32	816198		BEARING.....	1
33	807439		GREASE FITTING, 1/4 - 28.....	1
34	880364		BEARING LOWER (34 - INCLUDES ITEM 35).....	1
35	815695		GREASE FITTING, 10 - 32.....	1
36	885010		HANDLE BAR	1
37	840411		NUT, SPINDLE 7/8 - 14	1
38				
39				
40	806791		HORN BUTTON	1
41	807290		INSULATOR.....	1
42	800144		SCREW, # 10 - 16 X 5/8" LG	2
43	809069		CLAMP HORN	3

**DID YOU
KNOW?**

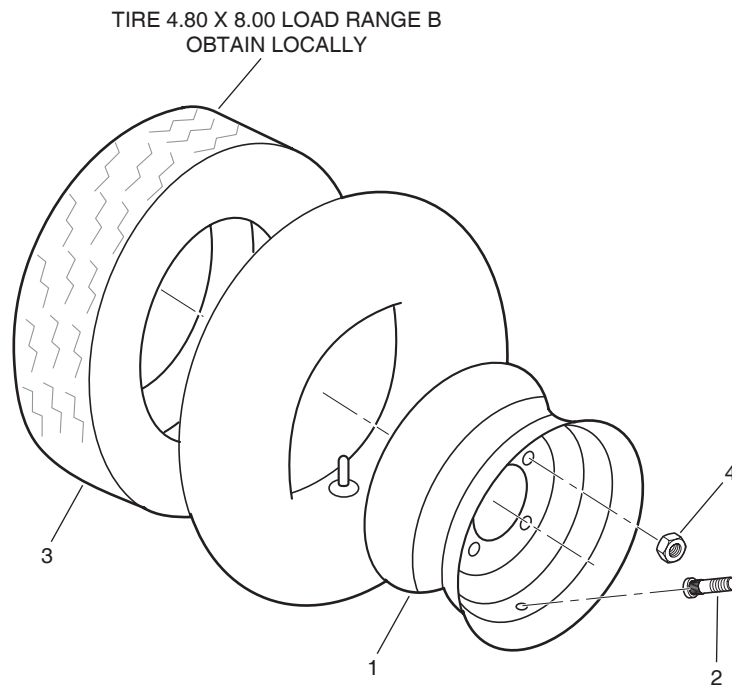
CartPros directs you to the right part using the part numbers from this manual. Enter the part number into our search box and it will find the part you are looking for.

**GET STARTED
HERE** →

<https://CartPros.com/f.html>

FORK AND HANDLE BAR

FRONT & REAR WHEELS AND TIRES



FRONT & REAR WHEELS AND TIRES

THE USE OF NON U.L. PARTS WILL VOID ANY U.L. LISTING.

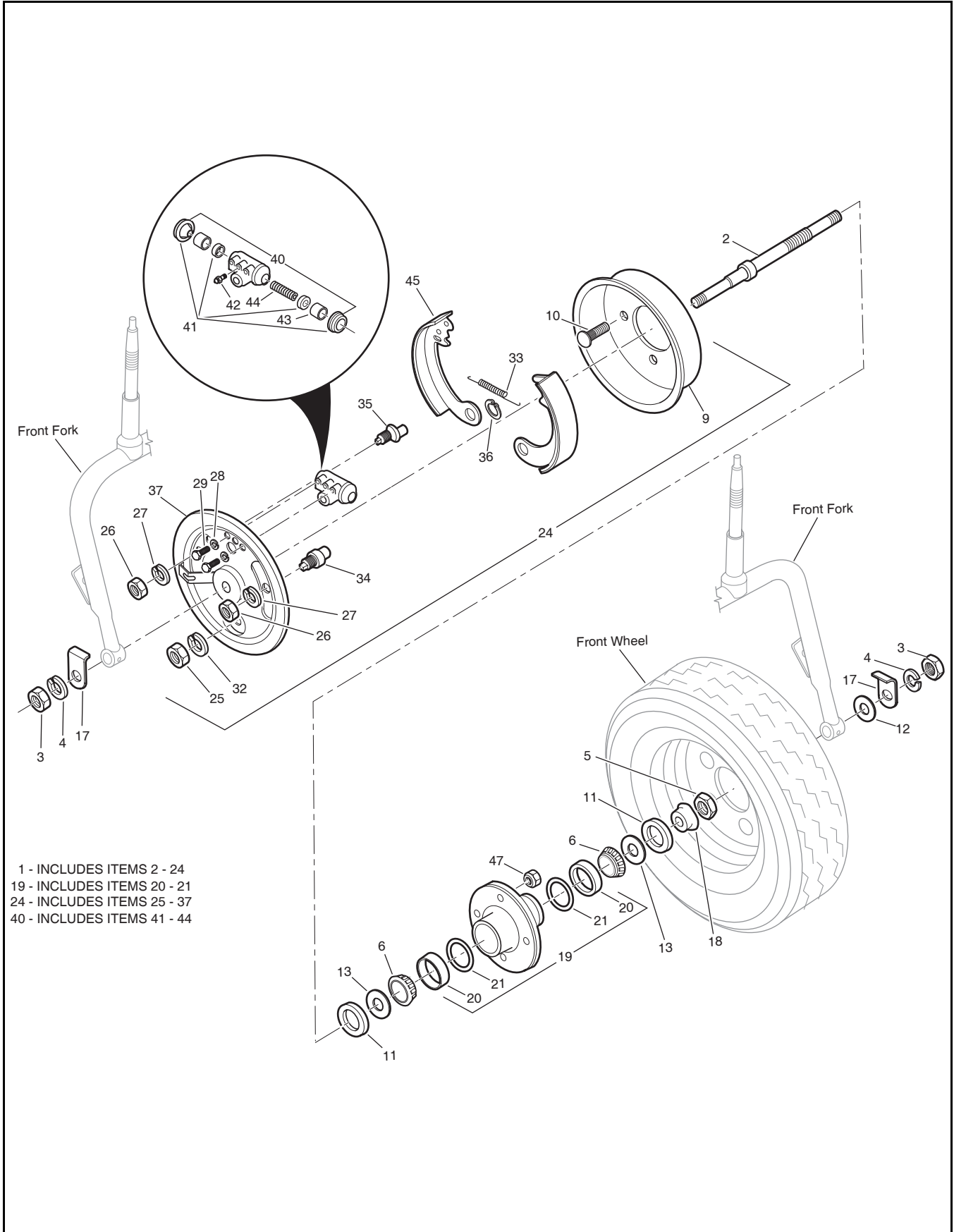
When ordering parts, please specify the model and serial number of the product.

* Indicates a component that is not available as an individual part.

G** Indicates consult Customer Service Department for additional information.

ITEM	PART NO.	1 2 3 4 5	DESCRIPTION	QTY.
1	824989		WHEEL, 8.00 X 3.75, FOUR BOLT HOLES	1
2	886735		STEM, VALVE	1
3	886378		TIRE (LOAD RANGE B), 4.80 X 8.00	1
4	805860		NUT	1
5	893042		FOAM FILLED	1

FRONT AXLE, HUB AND BRAKES



FRONT AXLE, HUB AND BRAKES

THE USE OF NON U.L. PARTS WILL VOID ANY U.L. LISTING.

When ordering parts, please specify the model and serial number of the product.

* Indicates a component that is not available as an individual part.

G** Indicates consult Customer Service Department for additional information.

ITEM	PART NO.	1 2 3 4 5	DESCRIPTION	QTY.
1	887194		FRONT AXLE, HUB, BRAKE COMPLETE (1 - INCLUDES ITEMS 2 - 24)	1
2	887193		AXLE FRONT	1
3	304104		NUT, 5/8 - 18	2
4	306494		LOCK WASHER, 5/8"	2
5	307665		NUT, 3/8 - 16	1
6	385174		CONE BEARING	2
7				
8				
9	805030		BRAKE DRUM	1
10	806274		BOLT, WHEEL MOUNT	4
11	807630		SEAL	2
12	809156		THRUST WASHER	1
13	809229		SLINGER	2
14				
15				
16				
17	832492		WASHER FRONT AXLE	2
18	836719		NUT	1
19	876409		HUB ASSEMBLY (19 - INCLUDES ITEMS 20 - 21)	1
20	808088		ROLLER BEARING	2
21	809268		RING	2
22				
23				
24	878482		SHIELD & BRAKE SHOES (24 - INCLUDES ITEMS 25 - 37)	1
25	304104		NUT, 5/8 - 18	1
26	306319		NUT, 3/8 - 24	2
27	306353		LOCK WASHER, 3/8"	2
28	306396		LOCK WASHER, 1/4"	2
29	306419		BOLT, 1/4 - 20 X 1/2" LG	2
30				

FRONT AXLE, HUB AND BRAKES

THE USE OF NON U.L. PARTS WILL VOID ANY U.L. LISTING.
 When ordering parts, please specify the model and serial number of the product.
 * Indicates a component that is not available as an individual part.
 G** Indicates consult Customer Service Department for additional information.

ITEM	PART NO.	1	2	3	4	5	DESCRIPTION	QTY.
31								
32	306494						LOCK WASHER, 5/8".....	3
33	805441						SPRING.....	1
34	829348						PIN	1
35	806761						PIN, ADJUSTMENT	2
36	809252						SNAP RING.....	1
37	878483						SHIELD DUST.....	1
38								
39								
40	886371						WHEEL CYLINDER (40 - INCLUDES ITEMS 41 - 44)	1
41	811775						WHEEL CYLINDER REPAIR KIT	1
42	811794						SCREW, BLEEDER.....	1
43	811910						PISTON.....	2
44	811911						SPRING	1
45	887284						BRAKE SHOE	2
46								
47	805860						WHEEL NUT	4

**DID YOU
KNOW?**

CartPros directs you to the right part using the part numbers from this manual. Enter the part number into our search box and it will find the part you are looking for.

**GET STARTED
HERE**



<https://CartPros.com/f.html>

FRONT AXLE, HUB AND BRAKES

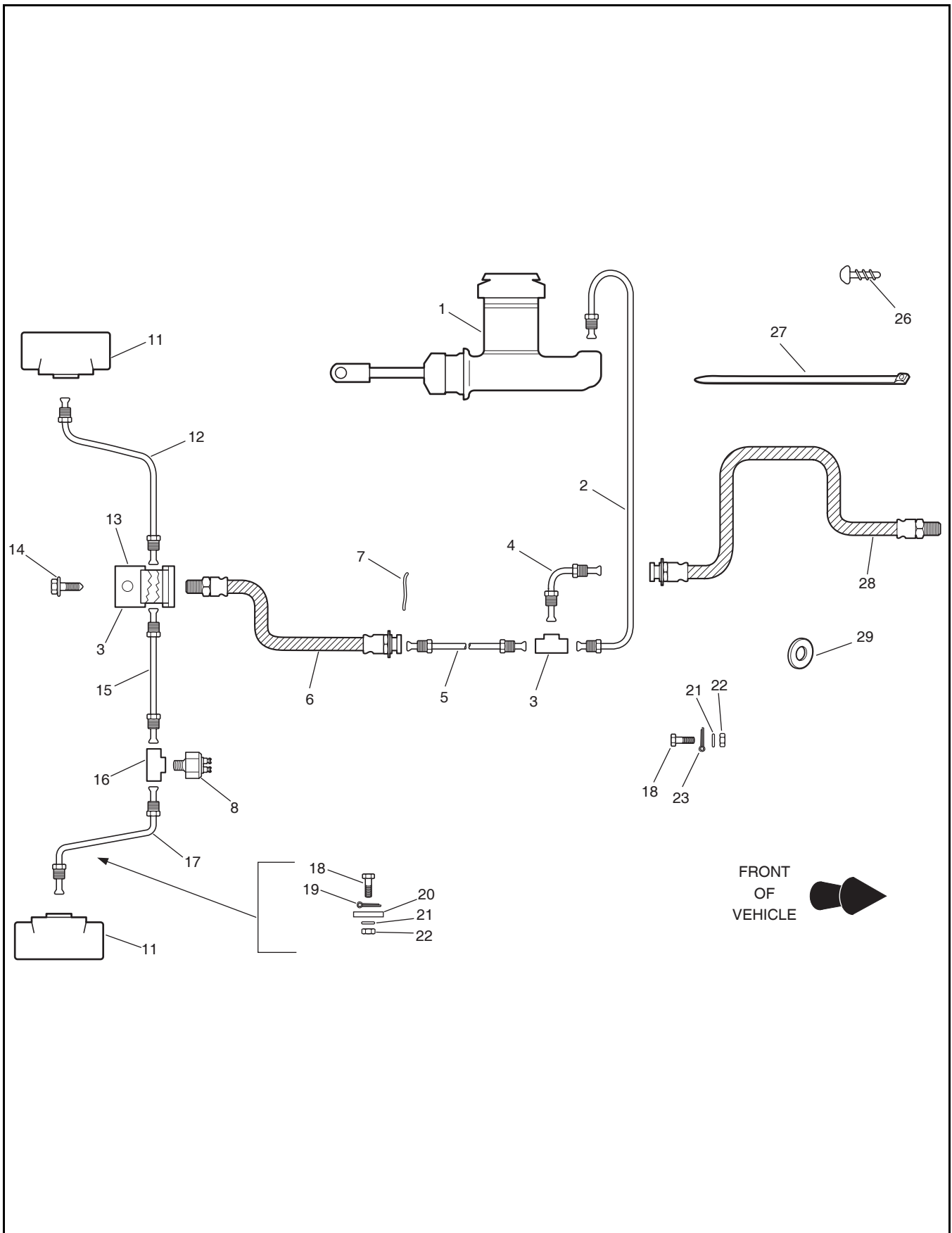
DID YOU KNOW?

CartPros directs you to the right part using the part numbers from this manual. Enter the part number into our search box and it will find the part you are looking for.

GET STARTED HERE →

<https://CartPros.com/f.html>

HYDRAULIC LINES AND RELATED PARTS



HYDRAULIC LINES AND RELATED PARTS

THE USE OF NON U.L. PARTS WILL VOID ANY U.L. LISTING.

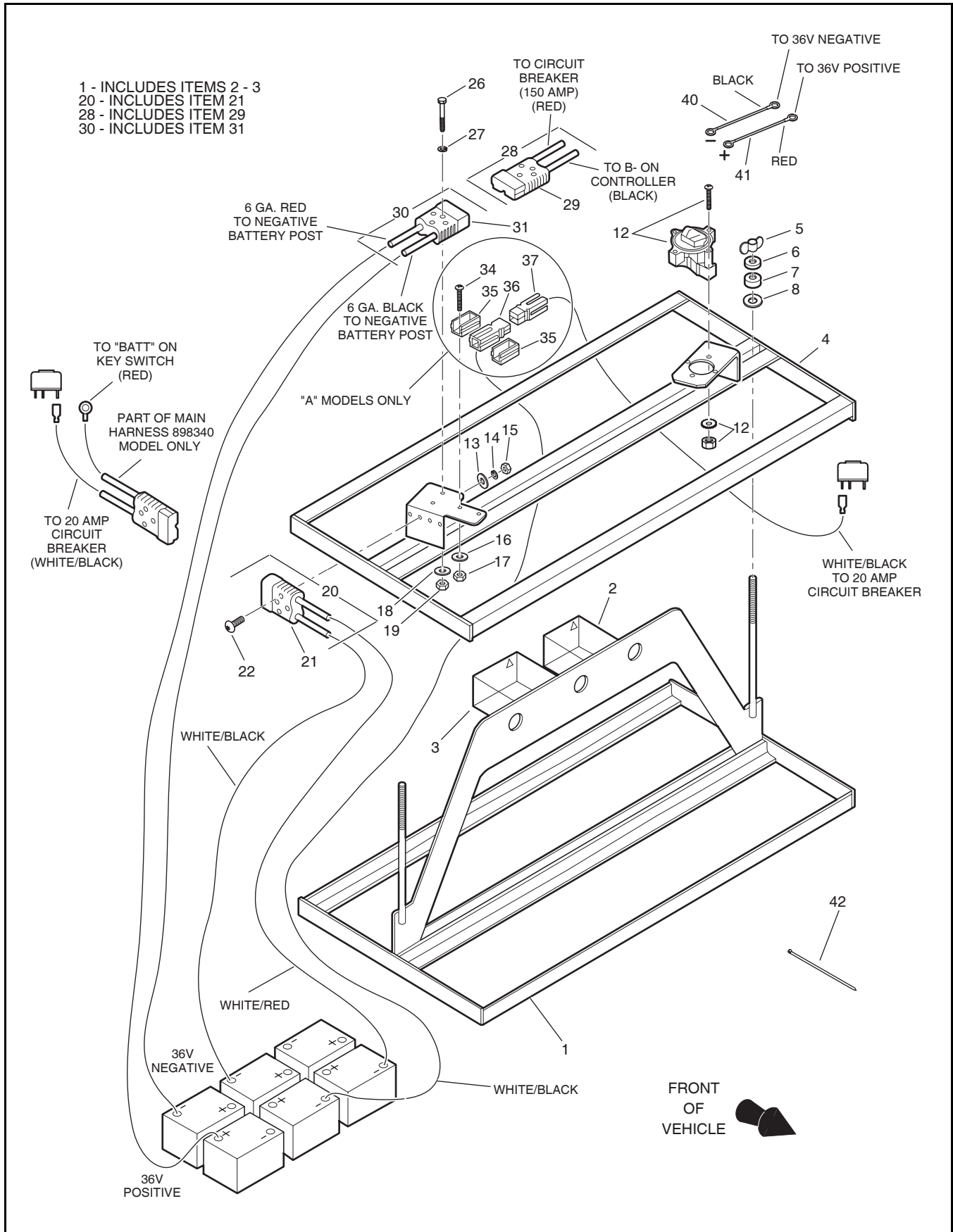
When ordering parts, please specify the model and serial number of the product.

* Indicates a component that is not available as an individual part.

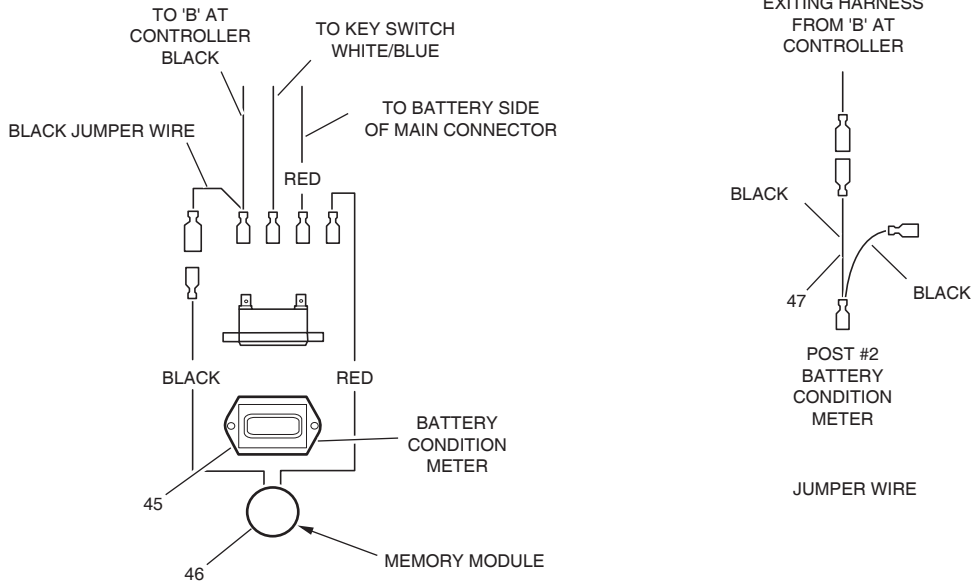
G** Indicates consult Customer Service Department for additional information.

ITEM	PART NO.	1 2 3 4 5	DESCRIPTION	QTY.
1	887364		CYLINDER, MASTER	1
2	831930		TUBE, HYDRAULIC, MASTER CYLINDER TO TEE	1
3	820008		FITTING, HYDRAULIC, TEE	2
4	831977		TUBE, HYDRAULIC, TEE TO FRONT BRAKE HOSE	1
5	2703211		TUBE, HYDRAULIC, TEE TO REAR BRAKE HOSE	1
6	817938		HOSE, FLEXIBLE, REAR	1
7	809137		CLIP, HYDRAULIC FITTING	1
8	21510-G1		SWITCH, STOPLIGHT	1
9				
10				
11	841354		CYLINDER, WHEEL (SEE WHEEL CYLINDER SECTION FOR REPLACEMENT PARTS)	2
12	831976		TUBE, HYDRAULIC, TEE TO LEFT BRAKE CYLINDER	1
13	832584		BRACKET	1
14	112050		SCREW, 1/4 X 5/8" LG	1
15	831975		TUBE, HYDRAULIC, TEE TO BRAKE LIGHT SWITCH	1
16	826587		FITTING, HYDRAULIC, TEE	1
17	831974		TUBE, HYDRAULIC, TEE TORIGHT BRAKE CYLINDER	1
18	300646		BOLT, 1/4-20 X 3/4" LG	2
19	812445		CLAMP	1
20	832287		BRACKET	1
21	306396		LOCK WASHER, 1/4"	2
22	306375		NUT, 1/4-20 X 3/4	2
23	814924		CLAMP	1
24				
25				
26	112050		SCREW, TAPPING	1
27	320107		WIRE TIE, 7" (178 MM)	1
28	826603		HOSE, FLEXIBLE, 38 1/2", FRONT	1
29	809231		GROMMET	1

LIFT OUT BATTERY RACK



LIFT OUT BATTERY RACK



LIFT OUT BATTERY RACK

THE USE OF NON U.L. PARTS WILL VOID ANY U.L. LISTING.

When ordering parts, please specify the model and serial number of the product.

* Indicates a component that is not available as an individual part.

G** Indicates consult Customer Service Department for additional information.

ITEM	PART NO.	1 2 3 4 5	DESCRIPTION	QTY.
	887637		LIFT OUT BATTERY RACK SET	1
1	887197		RACK, BATTERY W/DECALS (1 - INCLUDES ITEMS 2 - 3).....	2
2	819936		DECAL, WARNING, BATTERY CHARGING	2
3	824061		DECAL, LIFT OUT, WARNING	2
4	887783		HOLD DOWN, BATTERY	2
5	800315		WING NUT, 5/16-18.....	4
6	103867		WASHER, 5/16"	4
7	818303		SPACER, RUBBER	4
	883078		WIRE, BATTERY CONNECTION.....	5
8	809152		WASHER, SPECIAL	4
9				
10				
11				
12	885278		RECEPTACLE WITH HARDWARE, 50 AMP	2
13	308087		WASHER, #6	4
14	306990		LOCK WASHER, #6	4
15	302437		NUT, #6-32	4
16	120052		LOCK WASHER, #10	4
17	306531		NUT, #10-24	4
18	308090		WASHER, 1/4"	8
19	800059		NUT, 1/4-20, LOCK.....	4
20	887205		WIRE ASS'Y (50 AMP) (20 - INCLUDES ITEM 21).....	1
21	825341		PLUG (50 AMP)	1
22	313062		SCREW, #6-32 X 1" LG	4
23				
24				
25				
26	303459		SCREW, 1/4-20 X 1 1/2" LG.....	4
27	306396		LOCK WASHER, 1/4"	4
28	887204		WIRE (28 - INCLUDES ITEM 29)	1

LIFT OUT BATTERY RACK

THE USE OF NON U.L. PARTS WILL VOID ANY U.L. LISTING.

When ordering parts, please specify the model and serial number of the product.

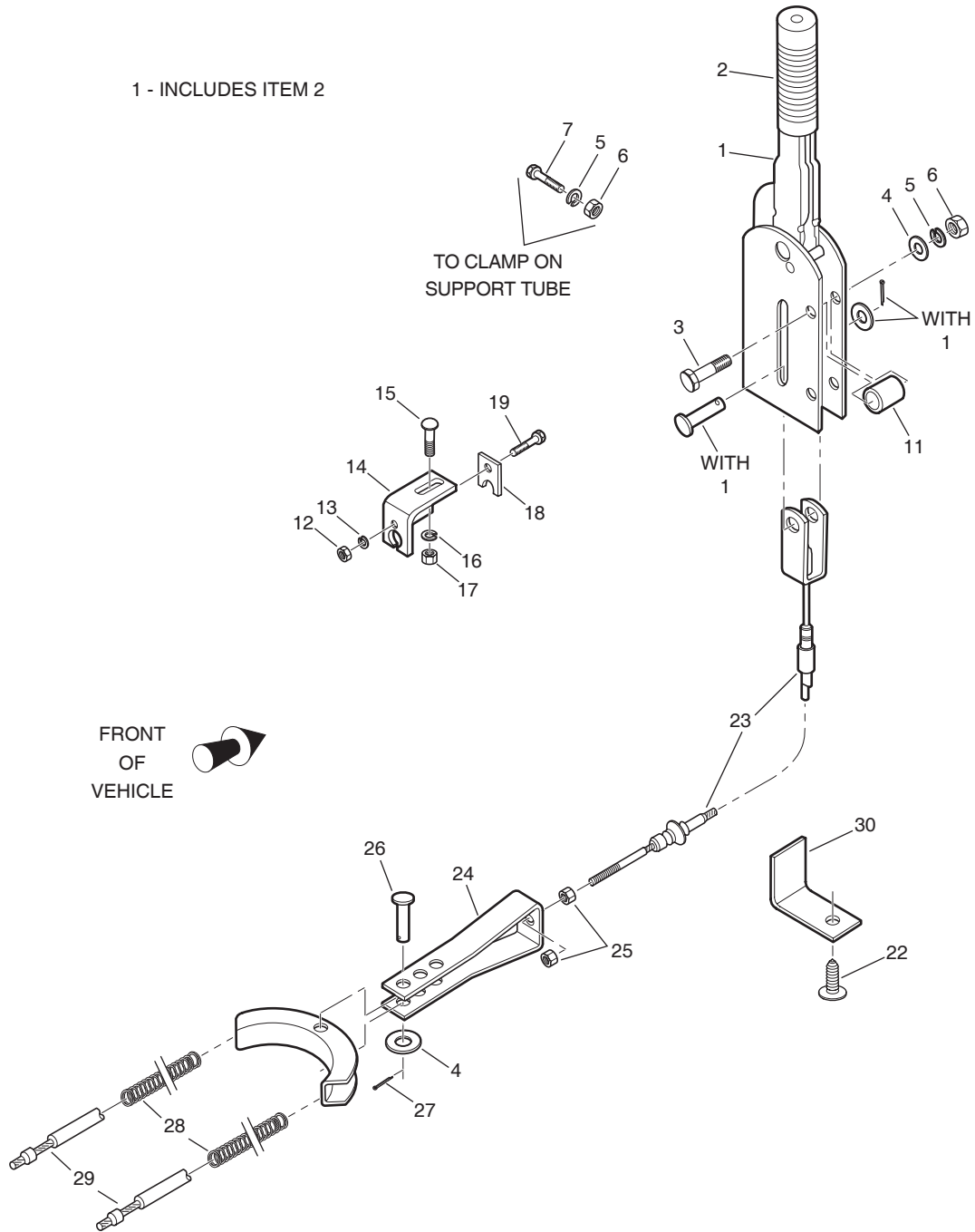
* Indicates a component that is not available as an individual part.

G** Indicates consult Customer Service Department for additional information.

ITEM	PART NO.	1	2	3	4	5	DESCRIPTION	QTY.
29	822821						PLUG, 175 AMP	1
	822904						BUSHING	1
30	884045						WIRE, BATTERY DISCONNECT (30 - INCLUDES ITEM 31).....	2
31	822821						PLUG (175 AMP)	1
	822904						BUSHING	2
34	800271						SCREW, #10-24"	4
35	841821						MOUNT,CONNECTOR BODY	4
36	893557						WIRE ASS'Y, SINGLE	2
37	893558						WIRE ASS'Y, SINGLE	1
38								
39								
40	887819						WIRE, CHARGER RECEPTACLE, BLACK.....	1
41	887818						WIRE, CHARGER RECEPTACLE, RED	1
42	320107						WIRE TIE, 7"	6
43								
44								
45	841851						GAUGE, BATTERY CONDITION METER.....	1
46	841852						BATTERY, BATTERY CONDITION METER.....	1
47	893700						HARNESS, JUMPER CONDITION METER	1

PARK BRAKE LEVER

1 - INCLUDES ITEM 2

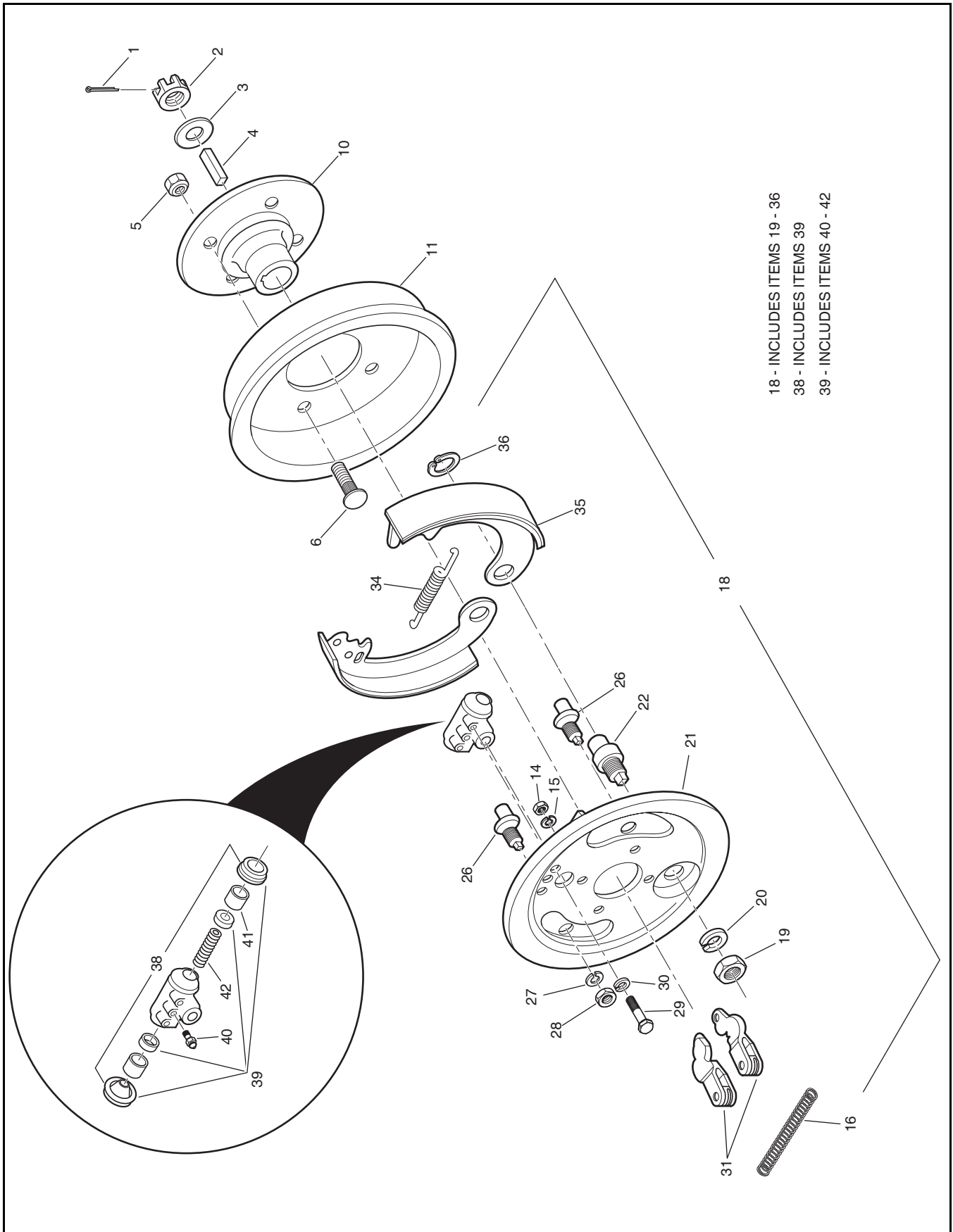


PARK BRAKE LEVER

THE USE OF NON U.L. PARTS WILL VOID ANY U.L. LISTING.
 When ordering parts, please specify the model and serial number of the product.
 * Indicates a component that is not available as an individual part.
 G** Indicates consult Customer Service Department for additional information.

ITEM	PART NO.	1 2 3 4 5	DESCRIPTION	QTY.
1	831263		LEVER, PARK BRAKE WITH HARDWARE (1 - INCLUDES ITEM 2)	1
2	807472		GRIP, HAND	1
3	306423		BOLT, 5/16-18 X 1 3/4" LG	2
4	103867		WASHER, 5/16"	3
5	306325		LOCK WASHER, 5/16".....	3
6	306932		NUT, 5/16-18.....	3
7	306416		BOLT, 5/16-18 X 1" LG	1
8				
9				
10				
11	831540		SPACER.....	2
12	306375		NUT, 1/4-20.....	1
13	306396		LOCK WASHER, 1/4".....	1
14	879859		BRACKET, CABLE.....	1
15	800073		BOLT, CARRIAGE, 3/8-16 X 1 1/4" LG.....	1
16	120177		LOCK WASHER, 3/8".....	1
17	306562		NUT, 3/8-16.....	1
18	325380		CLAMP (CABLE).....	1
19	300646		BOLT, 1/4-20 X 3/4" LG	1
20				
21				
22	800331		SCREW, #14A X 3/4" LG	1
23	831094		PARK BRAKE CABLE (FRONT).....	1
24	829637		BRACKET, PARK BRAKE	1
25	306320		NUT, 5/16-24.....	2
26	814079		PIN, CLEVIS.....	1
27	306328		PIN, COTTER, 3/32 X 3/4	1
28	810380		SPRING.....	2
29	831093		PARK BRAKE CABLE (REAR)	1
30	831978		RETAINER CABLE	1

REAR WHEEL BRAKE



REAR WHEEL BRAKE

Where applicable, THE USE OF NON UL PARTS WILL VOID ANY UL LISTING.

When ordering parts, please specify the model and serial number of the product.

* Indicates a component that is not available as an individual part.

G** Indicates consult Customer Service Department for additional information.

ITEM	PART NO.	1 2 3 4 5	DESCRIPTION	QTY.
1	304636		COTTER PIN, 1/8 X 1 1/8"	2
2	805843		NUT, 5/8 - 18.....	2
3	836674		WASHER.....	2
4	805875		KEY	2
5	805860		WHEEL NUT	8
6	806274		BOLT	8
7				
8				
9				
10	821152		WHEEL HUB	2
11	805030		BRAKE DRUM	2
12				
13				
14	306932		NUT, 5/16 - 18.....	8
15	306325		LOCK WASHER, 5/16".....	8
16	810380		SPRING.....	2
17				
18	886291		SHIELD WITH BRAKE SHOES (18 - INCLUDES ITEMS 19 - 38)	1
19	304104		NUT, 5/8 - 18	1
20	306494		LOCK WASHER, 5/8"	1
21	876519		SHIELD DUST	1
22	829348		PIN.....	1
23				
24				
25				
26	806761		ADJUSTMENT PIN.....	2
27	306353		LOCK WASHER, 3/8"	2
28	306319		NUT, 3/8 - 24	2
29	306419		BOLT, 1/4 - 20 X 1/2" LG.....	2
30	306396		LOCK WASHER, 1/4"	2

REAR WHEEL BRAKE

Where applicable, THE USE OF NON UL PARTS WILL VOID ANY UL LISTING.

When ordering parts, please specify the model and serial number of the product.

* Indicates a component that is not available as an individual part.

G** Indicates consult Customer Service Department for additional information.

ITEM	PART NO.	1	2	3	4	5	DESCRIPTION	QTY.
31	876732						BRAKE LEVER.....	2
32								
33								
34	805441						SPRING.....	1
35	887284						BRAKE SHOE WITH LINERS.....	2
36	809252						RETAINING RING.....	1
37								
38	841354						WHEEL CYLINDER COMPLETE (38 - INCLUDES ITEM 39).....	1
39	841450						WHEEL CYLINDER REPAIR KIT (39 - INCLUDES ITEMS 40 - 42).....	1
40	811794						SCREW, BLEEDER.....	1
41	841451						PISTON.....	1
42	841452						SPRING.....	1

**DID YOU
KNOW?**

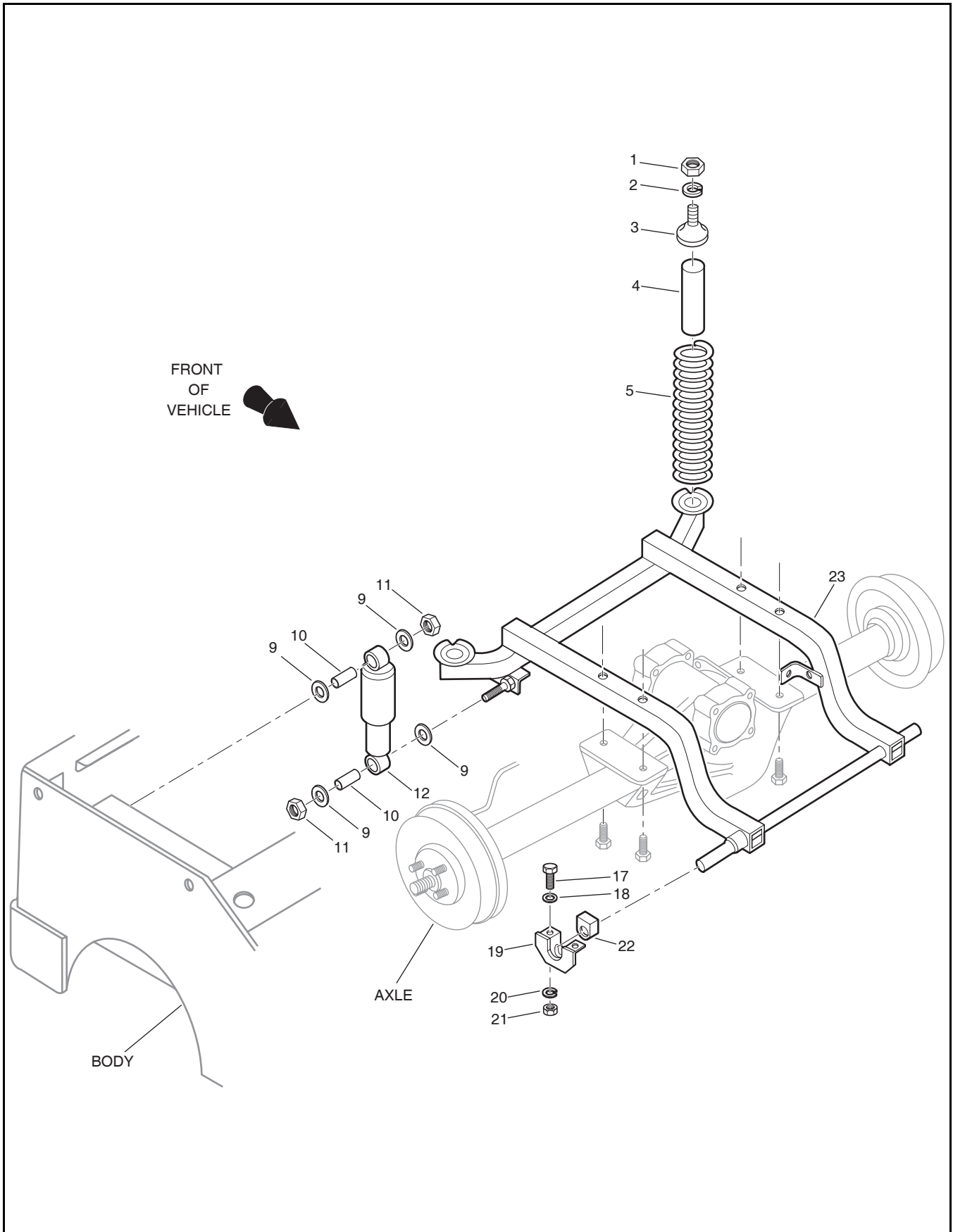
CartPros directs you to the right part using the part numbers from this manual. Enter the part number into our search box and it will find the part you are looking for.

**GET STARTED
HERE** →

<https://CartPros.com/f.html>

REAR WHEEL BRAKE

REAR WHEEL FRAME & SHOCK ABSORBER



REAR WHEEL FRAME & SHOCK ABSORBER

THE USE OF NON U.L. PARTS WILL VOID ANY U.L. LISTING.

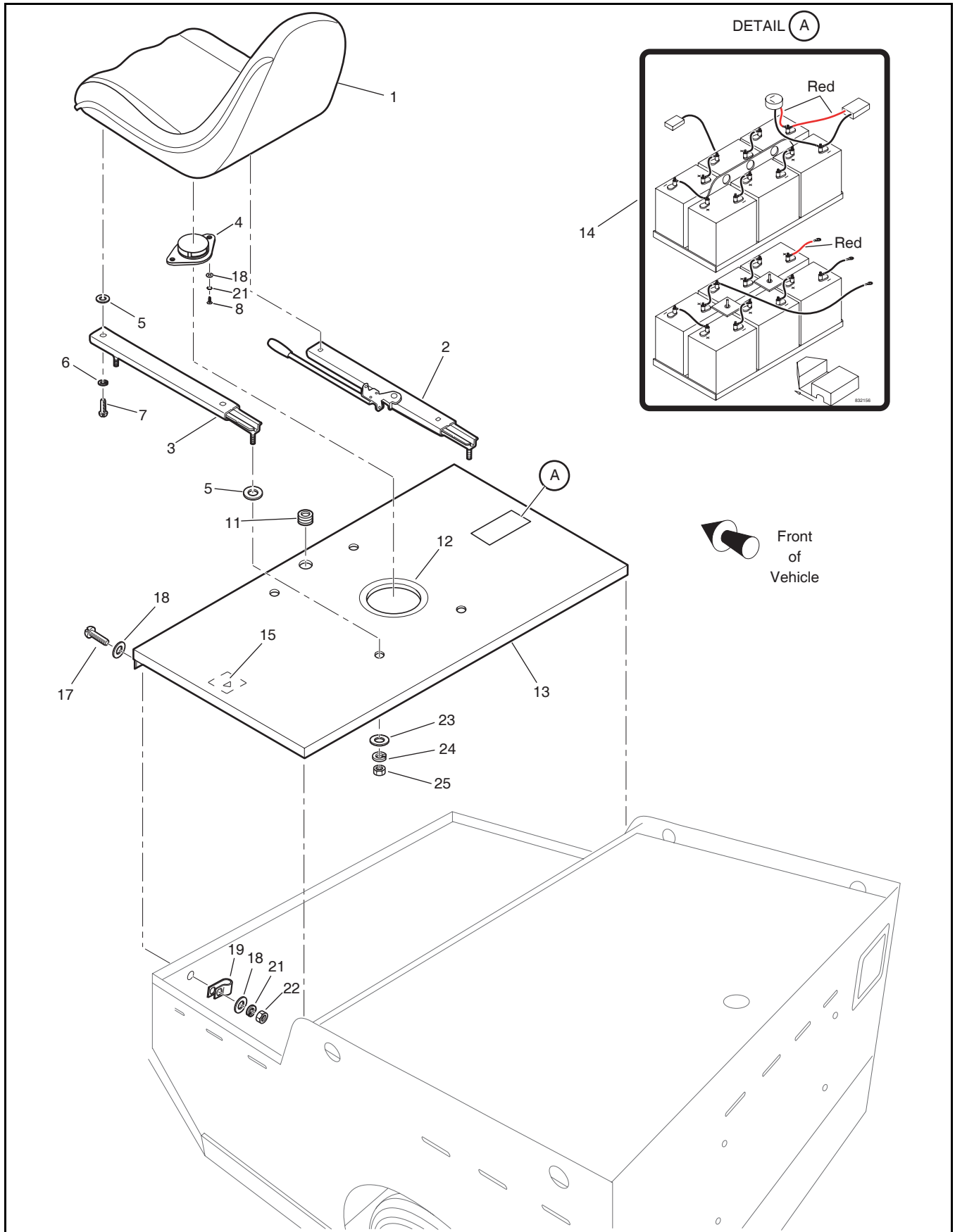
When ordering parts, please specify the model and serial number of the product.

* Indicates a component that is not available as an individual part.

G** Indicates consult Customer Service Department for additional information.

ITEM	PART NO.	1 2 3 4 5	DESCRIPTION	QTY.
1	308332		NUT, 1/2 - 13.....	2
2	120166		LOCK WASHER, 1/2".....	2
3	876660		RETAINER	2
4	825435		SPRING BUMPER	2
5	805437		REAR SPRING.....	2
6				
7				
8				
9	825500		CUP WASHER.....	4
10	823621		BUSHING	2
11	800294		LOCK NUT, 7/16 - 14	2
12	807332		SHOCK ABSORBER.....	1
13				
14				
15				
16				
17	306835		BOLT, 3/8 - 16 X 1 1/4" LG	4
18	306981		WASHER, 3/8"	4
19	887782		RETAINER	2
20	120177		LOCK WASHER, 3/8".....	4
21	306562		NUT, 3/8 - 16.....	4
22	816667		RUBBER BUSHING	2
23	887196		FRAME.....	1

SEATING



SEATING

THE USE OF NON U.L. PARTS WILL VOID ANY U.L. LISTING.

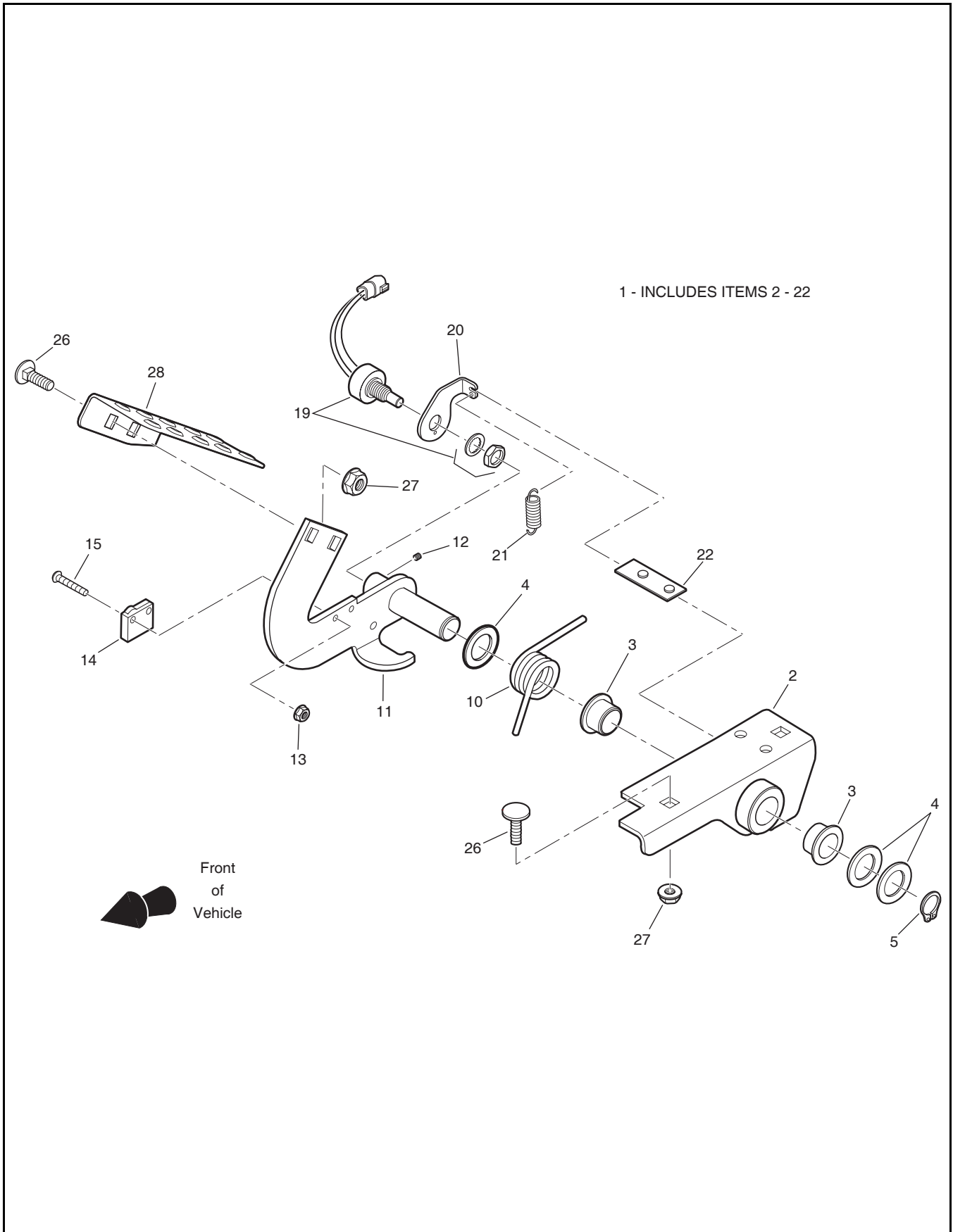
When ordering parts, please specify the model and serial number of the product.

* Indicates a component that is not available as an individual part.

G** Indicates consult Customer Service Department for additional information.

ITEM	PART NO.	1 2 3 4 5	DESCRIPTION	QTY.
1	198057		SEAT	1
2	831188		SEAT ADJUSTER (RIGHT)	1
3	831187		SEAT ADJUSTER (LEFT).....	1
4	158135-01		SEAT SWITCH.....	1
5	831053		SPACER.....	8
6	306325		LOCK WASHER, 5/16".....	4
7	548901		BOLT, .31 - 18 X 1/2" LG	4
8	548013		SCREW, 1/4-20 X 1 3/4" LG	1
9				
10				
11	810446		GROMMET.....	1
12	7156		TRIM BLACK.....	AR
13	887777		SEAT PANEL	1
14	832156		DECAL (WIRING).....	1
15	819936		DECAL (WARNING).....	1
16				
17	800215		BOLT, # 10 - 24 X 5/8" LG	6
18	308089		WASHER, # 10.....	6
19	814924		CLAMP	3
20				
21	120052		LOCK WASHER, # 10.....	6
22	306531		NUT, # 10 - 24.....	6
23	103867		WASHER, 5/16"	4
24	306325		LOCK WASHER, 5/16".....	4
25	306932		NUT, 5/16 - 18.....	4

SPEED CONTROL PEDAL



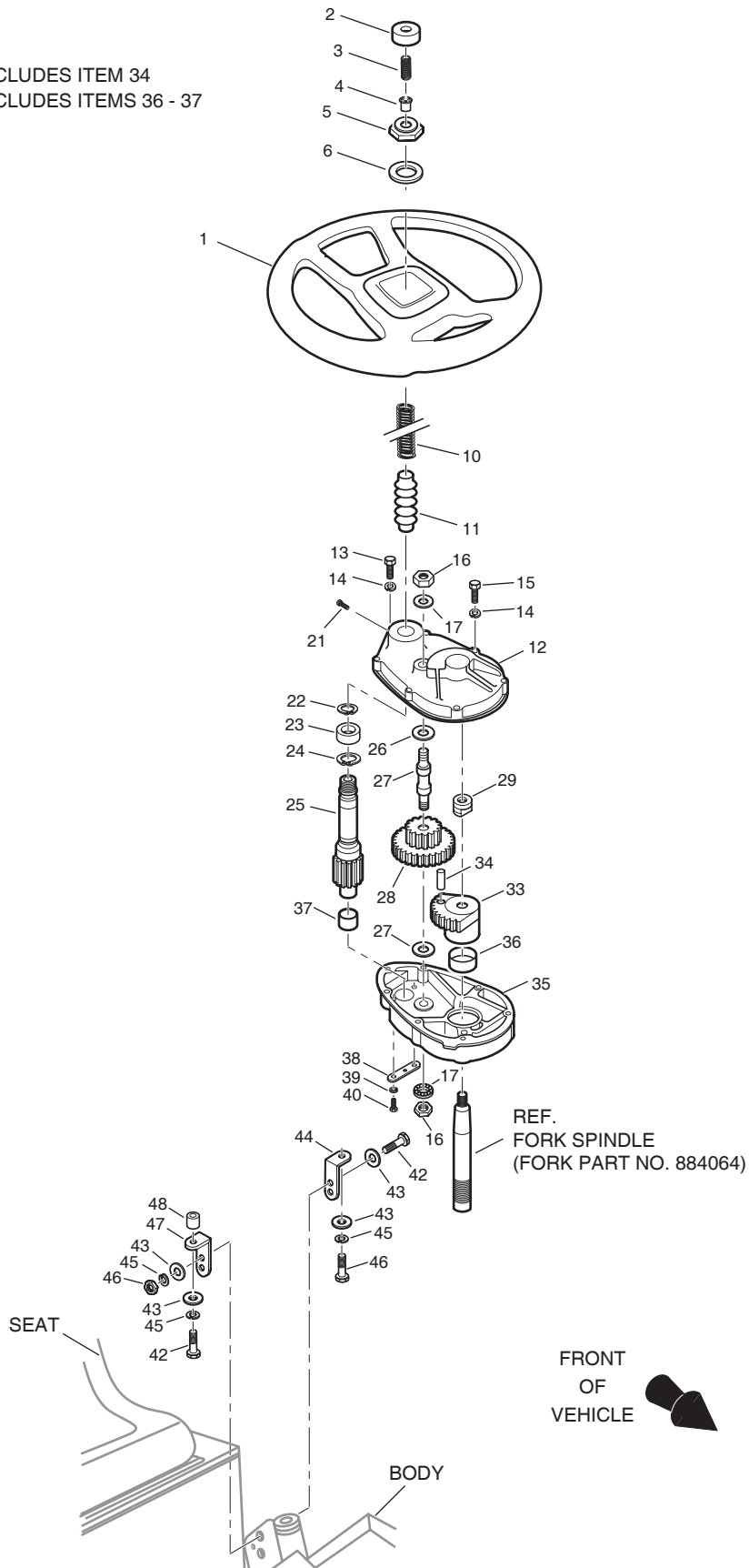
SPEED CONTROL PEDAL

THE USE OF NON U.L. PARTS WILL VOID ANY U.L. LISTING.
 When ordering parts, please specify the model and serial number of the product.
 * Indicates a component that is not available as an individual part.
 G** Indicates consult Customer Service Department for additional information.

ITEM	PART NO.	1 2 3 4 5	DESCRIPTION	QTY.
1	897184		SPEED CONTROL ASSEMBLY (1 - INCLUDES ITEMS 2 - 22)	1
2	897183		BRACKET, SPEED CONTROL MOUNT	1
3	840494		BEARING, FLANGED.....	2
4	548478		SPACER	3
5	833104		RETAINING RING	1
6				
7				
8				
9				
10	840435		TORSION SPRING.....	1
11	897182		SPEED CONTROL ARM	1
12	800225		SCREW, SET, #10-24 X 1/4" LG	1
13	800587		NUT (WITH LOCK WASHER), #4-40	2
14	829754		SWITCH.....	1
15	316056		SCREW, #6-32 X 3/4" LG	2
16				
17				
18				
19	4119768		POTENTIOMETER, 30 DEG.	1
20	869184		BRACKET, POT MOUNT	1
21	805421		INDEX SPRING	1
22	840688		TAB.....	1
23				
24				
25				
26	800557		BOLT, CARRIAGE, 5/16-18 X 3/4" LG.....	4
27	548911		LOCK NUT, 5/16-18	4
28	840419		SPEED CONTROL PEDAL.....	1

STEERING KIT

33 - INCLUDES ITEM 34
35 - INCLUDES ITEMS 36 - 37



STEERING KIT

THE USE OF NON U.L. PARTS WILL VOID ANY U.L. LISTING.

When ordering parts, please specify the model and serial number of the product.

* Indicates a component that is not available as an individual part.

G** Indicates consult Customer Service Department for additional information.

ITEM	PART NO.	1 2 3 4 5	DESCRIPTION	QTY.
	885009		STEERING SET, COMPLETE	1
1	892228		WHEEL, STEERING.....	1
2	833903		BUTTON, HORN.....	1
3	825370		SPRING, HORN.....	2
4	825369		INSULATOR, HORN.....	1
5	816652		NUT, HORN BUTTON	1
6	311496		WASHER, 5/8"	1
7				
8				
9				
10	826736		SHIELD, STEERING SHAFT.....	1
	828380		INSULATION TUBING, 25'(7.6M).....	AR
11	831909		BOOT.....	1
12	832555		HOUSING, UPPER.....	1
13	302030		BOLT, 1/4-20 X 1 1/4" LG.....	3
14	306396		LOCK WASHER, 1/4"	7
15	306832		BOLT, 1/4-20 X 2" LG.....	4
16	800612		NUT, 7/16-20	2
17	816449		KNURLED WASHER.....	2
18				
19				
20				
21	800022		BOLT, #10-24 X 3/8" LG.....	2
	807035		TERMINAL.....	1
22	816455		RETAINING RING	1
23	816456		BALL BEARING	1
24	816447		RETAINING RING	1
25	816660		SHAFT, PINION GEAR.....	1
26	816446		SHIM.....	2
27	883317		BOLT, IDLER ADJUSTING.....	1

STEERING KIT

THE USE OF NON U.L. PARTS WILL VOID ANY U.L. LISTING.

When ordering parts, please specify the model and serial number of the product.

* Indicates a component that is not available as an individual part.

G** Indicates consult Customer Service Department for additional information.

ITEM	PART NO.	1	2	3	4	5	DESCRIPTION	QTY.
28	830168						GEAR, CLUSTER	1
29								
30								
31								
32								
33	886913						GEAR DRIVEN (33 - INCLUDES ITEM 34)	1
34	310546						PIN, ROLL, 1/2 X 1 1/2	1
35	833182						HOUSING, LOWER (35 - INCLUDES ITEMS 36 - 37)	1
36	830370						BUSHING	1
37	515511						BUSHING	1
38	823932						PLATE, RETANER	1
39	306325						LOCK WASHER, 5/16"	2
40	306322						BOLT, 5/16-18 X 7/8" LG	2
41								
42	302600						BOLT, 3/8-16 X 1 1/2" LG	3
43	306981						WASHER, 3/8"	6
44	825493						SUPPORT HOUSING (LEFT)	1
45	120177						LOCK WASHER, 3/8"	4
46	306835						BOLT, 3/8-16 X 1 1/4" LG	1
47	825492						SUPPORT HOUSING (RIGHT)	1
48	808935						SPACER	1

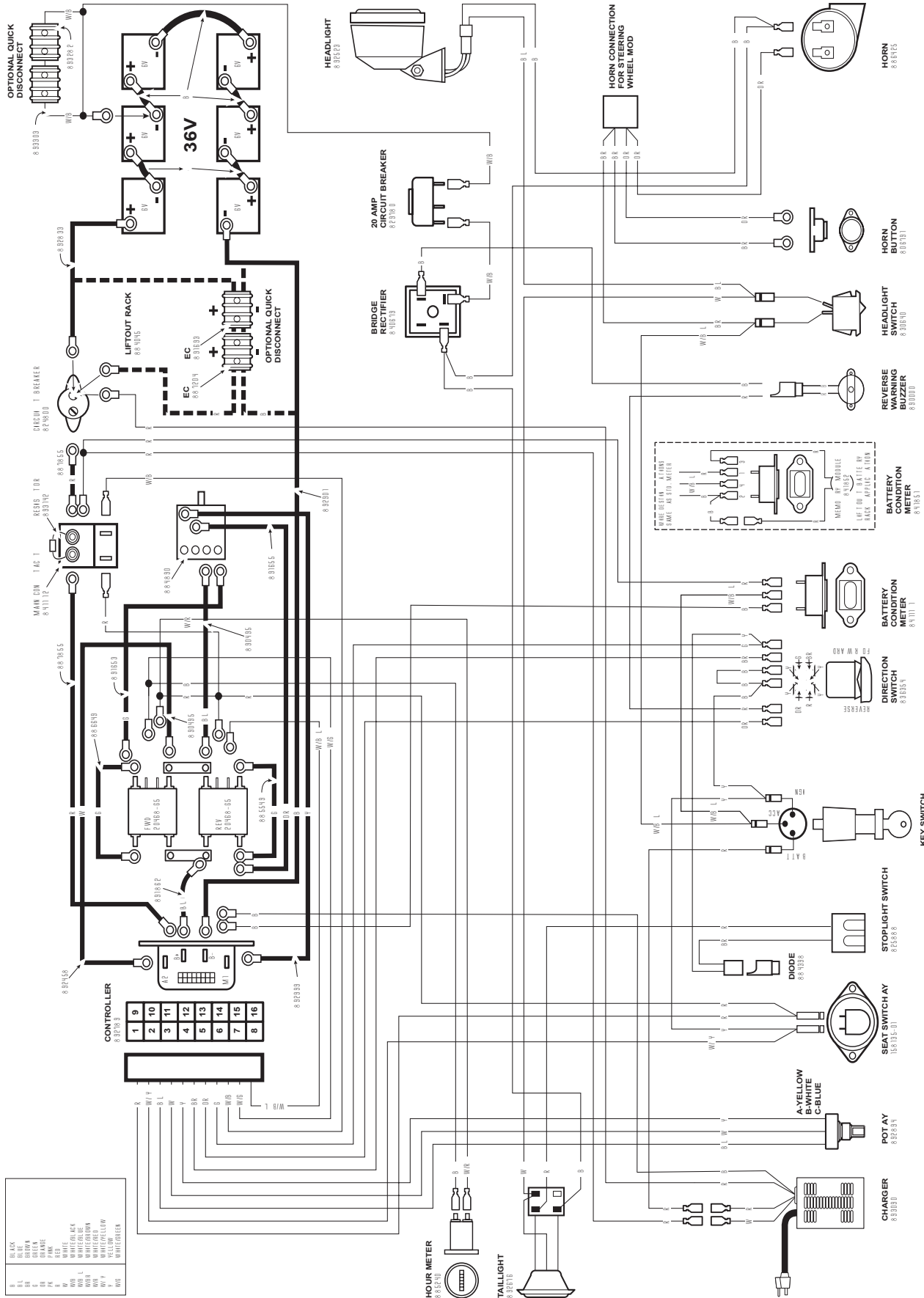
**DID YOU
KNOW?**

CartPros directs you to the right part using the part numbers from this manual. Enter the part number into our search box and it will find the part you are looking for.

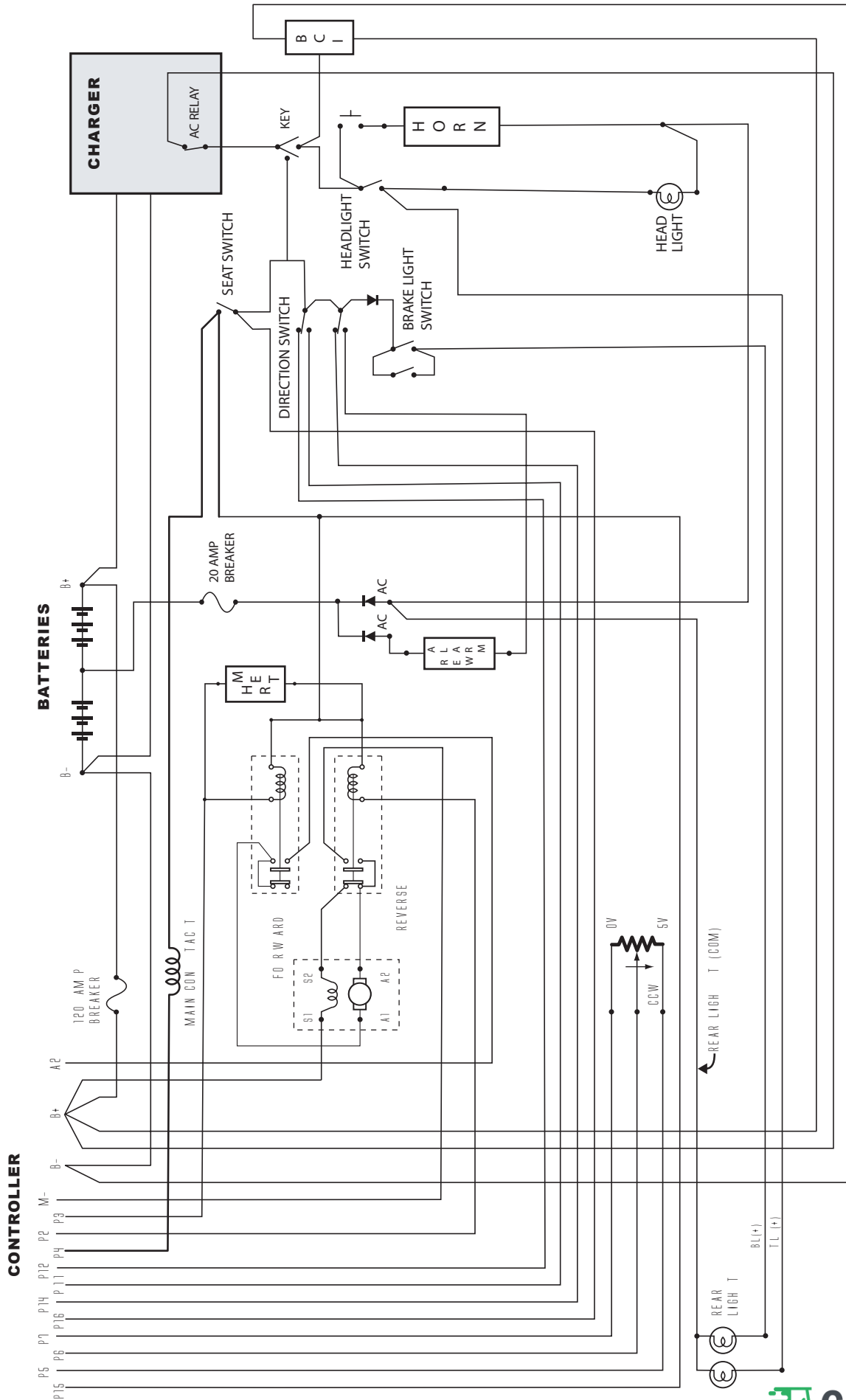
**GET STARTED
HERE** →

<https://CartPros.com/f.html>

STEERING KIT



ALL WIRING IN MAIN HARNESS 897160 UNLESS NOTED



**DID YOU
KNOW?**

CartPros directs you to the right part using the part numbers from this manual. Enter the part number into our search box and it will find the part you are looking for.

**GET STARTED
HERE**



<https://CartPros.com/f.html>

**DID YOU
KNOW?**

CartPros directs you to the right part using the part numbers from this manual. Enter the part number into our search box and it will find the part you are looking for.

**GET STARTED
HERE** →

<https://CartPros.com/f.html>

CUSHMAN[®]

A Textron Company



E-Z-GO Division of Textron, Inc.,
1451 Marvin Griffin Road, Augusta, Georgia USA 30906-3852

TO CONTACT US...

North America:

**Technical Assistance & Warranty
Service Parts**

Phone: 1-800-774-3946, FAX: 1-800-448-8124

Phone: 1-888-GET-E-Z-GO (1-888-438-3946), FAX: 1-800-752-6175

International:

Phone: 001-706-798-4311, FAX: 001-706-771-4609

Certified ISO 9001 / ISO 14001 by



Copyrighted Material

This manual may not be reproduced in whole or
in part without the express permission of
E-Z-GO Division of Textron, Inc.
Technical Communications Department