

## Installation Instructions Four Inch Suspension Lift Kit

These instructions are for the installation of a lift kit.  
Order Kit 93271-02

**Affected Models:** S10 , P4

### Parts Needed:

ITEM	CPC P/N	DESCRIPTION	QTY	SI P/N
1	40943-99	FRONT LIFT BLOCK	1	307154
2	40942-99	LIFT SHOCK MOUNT	2	307155
3	57162-03	STEERING SPINDLE LH	1	467064
4	57163-03	STEERING SPINDLE RH	1	467065
5	36502-01	4H WHEEL SPACER	2	509599
6	46901-07	REAR BLOCK LIFT	2	511679
7	4017	SCREW, 5/16-18X1 HHC G8	4	708085
8	4043	SCREW, 1/2-13X1 HHC G8	2	708485
9	7538	NUT, 5/8-18 LOCK	2	719044
10	719463-05	WHEEL BOLT, 1/2-20X1.680	8	719463
11	4716-W	SCREW, 3/8-16X1 1/4 HHC G5	4	719694
12	520-W	COTTER PIN, 1/8X1	8	719728
13	6607-W	WASHER FLAT .390X.910X.180	4	719804
14	6702-B	WASHER, 5/16	5	719810
15	7525	NUT, 5/16-18 GR A SERR FLNG LOCK	4	719864
16	7685	NUT, 1/2-13 NYLOCK	2	719878
17	7755	NUT, 3/8-16	4	760721
18	781111	SCREW, 3/8-16X2 CARR G8	4	781111
19	781113	NUT, 3/8-16	8	781113
20	781116	SCREW, 3/8-16X1 1/4 CARR G8	4	781116

### Tools needed:

Socket/Wrench Set  
Floor Jack  
Hammer  
Torque Wrench

### Legend:



**Danger** indicates a hazardous situation which, if not avoided, will result in death or serious injury.



**Warning** indicates a hazardous situation which, if not avoided, could result in death or serious injury.



**Caution** indicates a hazardous situation which, if not avoided, could result in minor or moderate injury.

**NOTICE:** Notices are messages not related to personal injury. They will provide key information to prevent property damage and to assure procedures are more easily understood or implemented.

## Installation Instructions Four Inch Suspension Lift Kit

**NOTICE:** Please read the following instructions carefully and completely before beginning. It is important to have an understanding of the overall instructions as each step is completed.

### ⚠ WARNING

Before installation, turn off vehicle, remove key from keyswitch, Block wheels and disconnect negative terminal from battery to prevent accidental operation.

**NOTICE:** Before reinstalling any parts previously removed from vehicle, inspect for wear and/or damage and replace if necessary.

### PROCEDURE REAR SUSPENSION

1. Lift and support vehicle on the chassis per the service manual.
2. Remove tire/wheel assemblies from the vehicle and set aside.
3. Disconnect both brake cables completely from the brakes.
4. Disconnect wires from electric motor and label, if not already labeled, to ease reassembly.
5. Remove motor from rear axle and safely support the control panel assembly, if needed, so wires are not stretched or damaged.
6. Safely support the rear axle with a floor jack.
7. Remove the lower shock mounting bolts and remove the rear springs by carefully and slowly lowering the floor jack.
8. Raise the axle and fork back up using the floor jack and loosely reinstall the lower shock mounting bolts to hold the rear fork up as the axle is lowered from the fork.
9. Loosen and remove the bolts holding the rear axle to the fork.
10. Carefully lower the rear axle and secure it so that it does not fall off the floor jack.
11. Loosely install the rear lift blocks (Item 6) to the fork using the existing bolts and nuts that held the axle to the fork.

**NOTICE:** The holes in the rear lift blocks are located differently from front to rear on the top and bottom of the lift block. Make sure that the holes closest to the end of the blocks are on the bottom and to the rear of the assembly

12. See Figure 1. Loosely fasten the axle to the lift blocks (Item 6) using the new 3/8 x 1 1/4 bolts (Item 11) and lock nuts (Items 19). Make sure the bolts run down through the lift blocks.
13. Tighten the bolts holding the axle to the lift blocks and the bolts holding the lift blocks to the fork.
14. Reinstall the rear springs and make sure the springs are centered in the spring perches.
15. Reinstall the lower shock mounting bolts removed earlier and tighten.

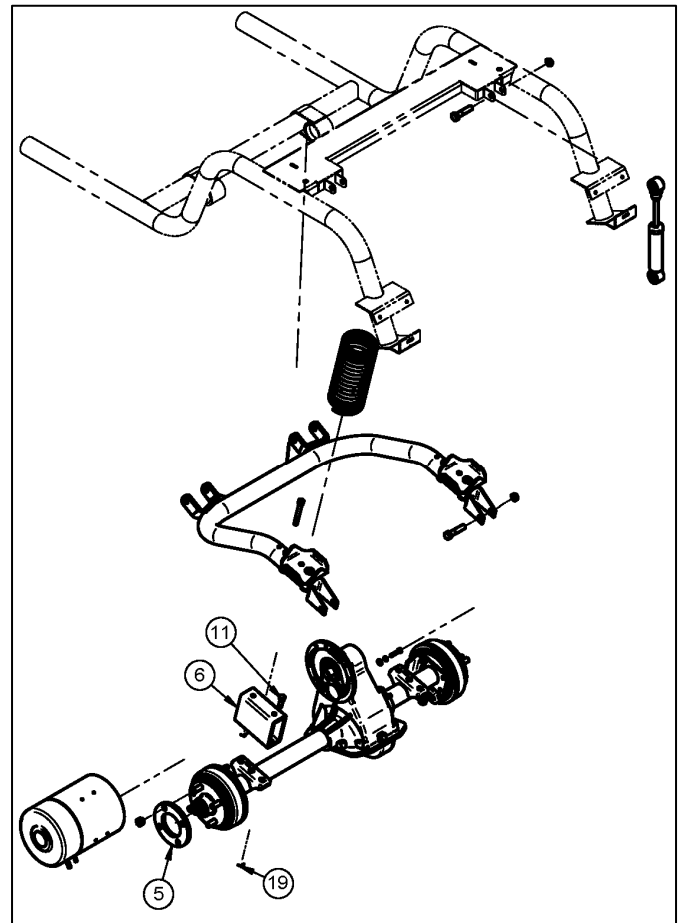


Figure 1

## Installation Instructions Four Inch Suspension Lift Kit

16. Install new, longer rear wheel studs (Item 10)

### For vehicles with the one piece drum assembly:

- Remove the rear brake drum by removing the cotter pin and castle nut.
- Place the drum on a flat surface and carefully hit studs with a hammer to knock them loose from the drum.
- Install the new studs by placing a new stud into the drum and install a lug nut backward onto the stud.
- Tighten the lug nut with an air wrench to seat the new stud into the drum.
- Repeat for all 8 studs and remove the lug nut when complete.
- Reinstall the drum onto the axle and torque the castle nut to 65 ft-lbs.
- Tighten the castle nut further so the slot in the castle nut lines up with the hole in the axle and install a new cotter pin (Item 12).

### For vehicles with the two piece hub and drum assembly:

- Remove the brake drum from the hub.
- Remove the center lock flange nut that holds the hub onto the axle shaft.
- With the hub safely supported, drive the old studs out of the hub with a sharp blow from a hammer.
- Place a new stud into the hole in the hub and install a lug nut backward onto the stud.
- Tighten the lug nut with an air wrench to seat the stud in the hub.
- Repeat for all 8 studs.
- Reinstall the hub onto the axle shaft.
- Install a new locking flange nut (Item 9) to hold the hub to the axle shaft.
- Tighten the nut to 100 ft-lbs with a torque wrench.

**NOTICE: Do not tighten the new locknut with an impact gun or damage to the nut will occur.**

- Reinstall the brake drum onto the hub.

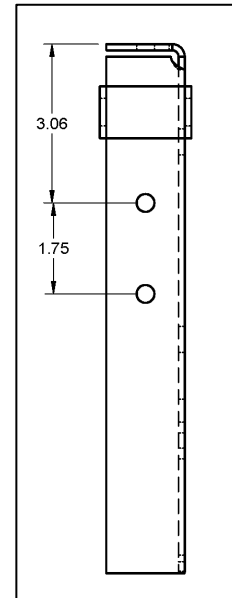
- Install wheel spacers (Item 5), one per side, over the rear wheel mounting studs for tire clearance.
- Route the brake cables below the fork mounting tube so the cables are not stretched.
- Reattach the brake cables to the brakes using new cotter pins (Item 12) and adjust per the service manual.
- Install rear tires and torque lug nuts to 65 ft lbs.
- Install the electric motor onto the axle and connect the wires that were previously removed. Be sure to torque the motor mounting bolts to 100 in-lbs and torque the nuts holding the power cables to 100 in-lbs while holding the lower nut with a wrench and using a torque wrench on the upper nut.

### PROCEDURE – FRONT SUSPENSION

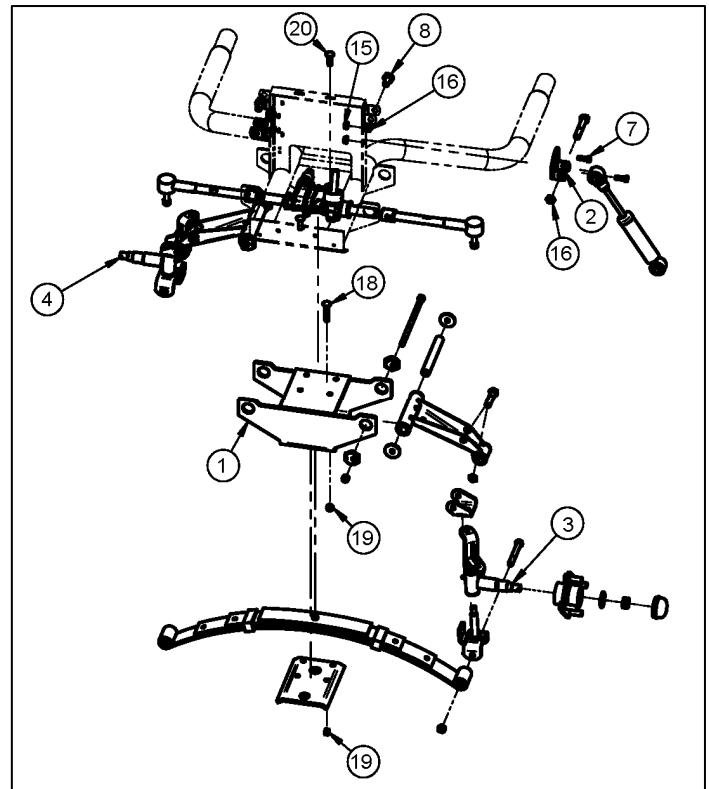
- Remove the front body and front bumper cover per the service manual.
- Remove the front shocks from their top mounts. Save bolts for reuse.
- Remove the dust covers from the front hubs.
- Remove front wheel hubs from the steering arms.
- Disconnect the outer tie rods from the steering arms.
- Remove the A-Arm brackets from the kingpins on each side.
- Remove the A-Arms from the chassis on both sides. Note the order of disassembly to aid in reassembling these parts.
- Remove the front steering arms.
- Remove the three bolts holding the rack and pinion steering gear to the chassis so the leaf spring mounting bolts can be loosened and removed.
- Remove the leaf spring from below the chassis. Remove the bolts that held the leaf spring to the chassis.
- Install the front lift block (Item 1) to the bottom of the chassis where the leaf spring was just removed. Use the four 3/8 x 1 1/4 bolts (Item 20) and locknuts (Item 19) supplied with the kit to fasten the lift block to the chassis. Make sure the lift block is fastened to the chassis so the new A-Arm mounts are toward the front of the vehicle from the existing A-Arm mounts.

## Installation Instructions Four Inch Suspension Lift Kit

12. Install the leaf spring to the bottom of the front lift block using the new 3/8 x 2" bolts (Item 18) and locknuts (Item 17) and washers (Item 13, not shown) supplied. Be sure the leaf spring center bolt fits into the cutout in the lift block and that the leaf spring is centered in the chassis and straight from side to side. This will make aligning the front suspension easier later on. Torque leaf spring mounting bolts to 40 ft-lbs.
13. Reattach the Rack and Pinion assembly to the chassis using the three bolts removed earlier. If there were spacers between the rack and pinion casting and the chassis, make sure these are reinstalled.
14. Loosely install the A-Arms to the lift block. Be sure to install the hardware in the same order as previously installed.
15. Install the new steering arms (Items 3 & 4) onto the kingpins.
16. Reattach the A-Arm brackets to the kingpins and torque the castle nut to 30 ft lbs. Tighten the castle nut further so the cotter pin hole aligns with the castle nut. Install a new cotter pin (Item 12).
17. Reinstall the front wheel hubs to the steering arms. Install the castle nut and torque this to 65 ft lbs. Continue to tighten this nut to install a new cotter pin (Item 12).
18. Grease the new steering arms and the A-Arms.
19. Using the dimensions shown in Figure 2, drill 2 holes (bolts are 5/16" diameter so a slightly larger drill bit should be used) in each side of the shock tower to mount the new upper shock mounts (Item 2).
20. Install the two upper shock mounts as shown in Figure 3. Make sure the bolts go into the shock mount and that the shock is moved to the front of the vehicle.
21. Install the new front wheels and torque the lug nuts to 65 ft lbs.
22. Remove the jack stands and set the vehicle on a level surface.
23. Realign the front suspension per the service manual and torque the camber adjustment bolts to 25 ft-lbs.
24. Reinstall the front body and front bumper cover removed previously.
25. Reattach battery cables removed earlier and test drive the vehicle to make sure it operates correctly.



**Figure 2**



**Figure 3**